

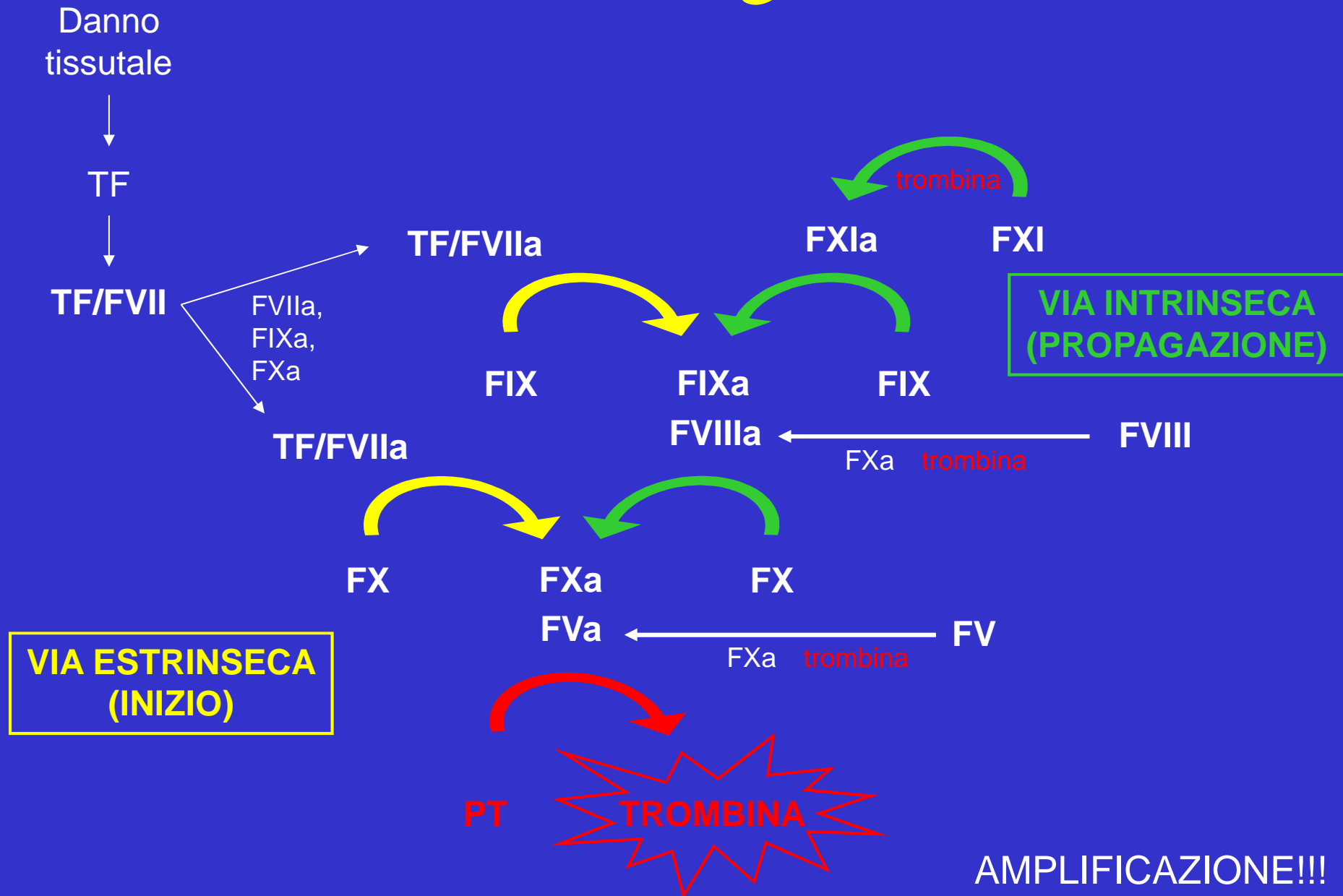
Coagulazione del sangue

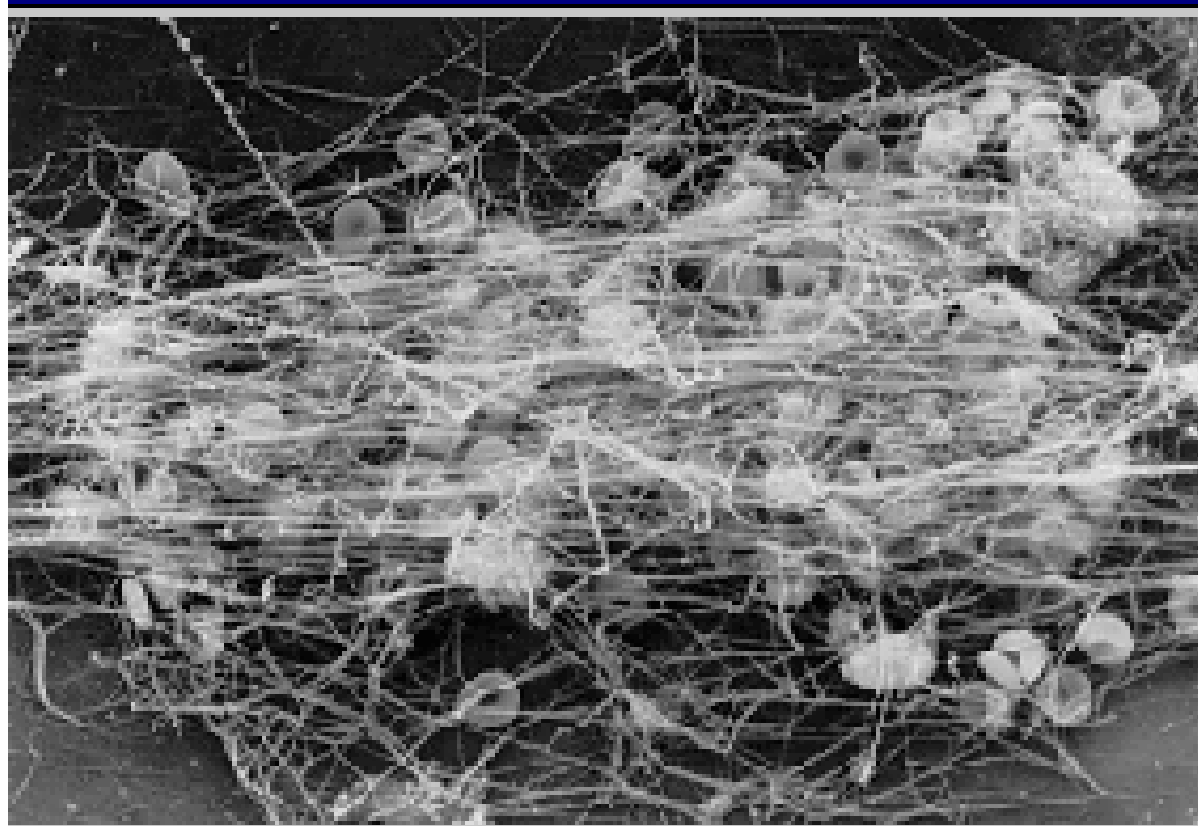
- ❖ Attivazione sequenziale di proteine (fattori della coagulazione) circolanti in forma inattiva
- ❖ Formazione di un reticolo di fibrina che intrappola gli elementi corpuscolati del sangue

Fattori della coagulazione

- Zimogeni/serin-proteasi: FVII, FIX, FX, FXI, PT
- Cofattori non enzimatici: FV e FVIII
- Proteina strutturale: fibrinogeno

Cascata coagulativa

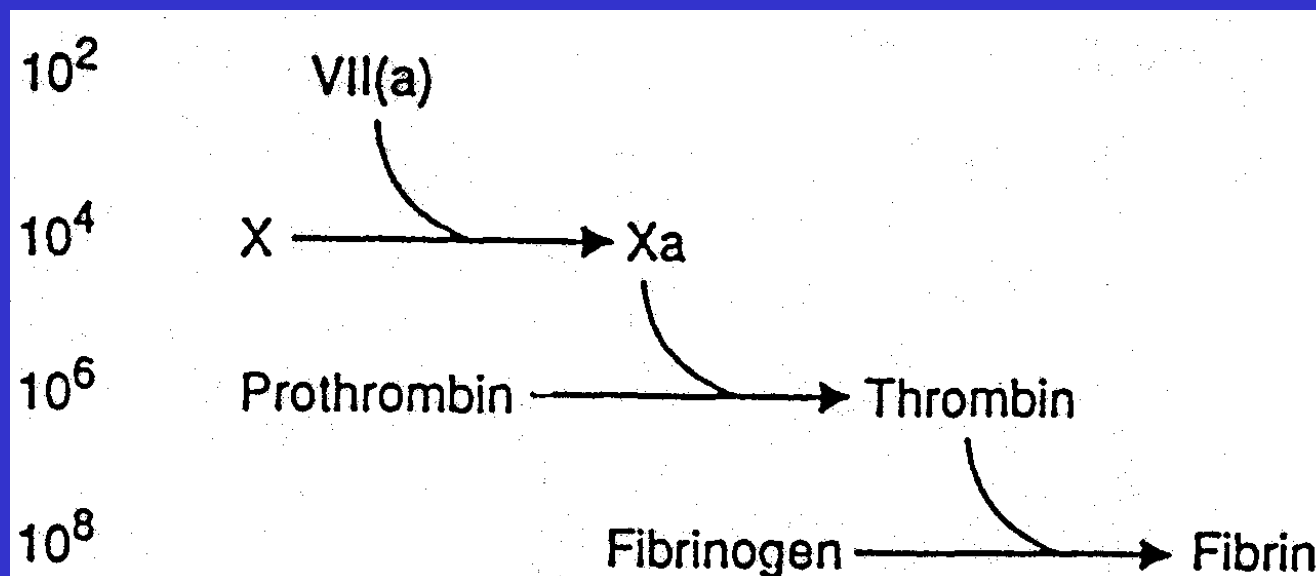




Fibrin clot

General Characteristics of the Coagulation Cascade

- The predominant mechanism illustrated in the activation pathway is that of an **enzyme amplification cascade**. One enzyme at the start of the activation pathway can activate many molecules of a given substrate



COAGULAZIONE

```
graph TD; A(( )) --> B[Fattori coagulativi]; A --> C[Inibitori fisiologici];
```

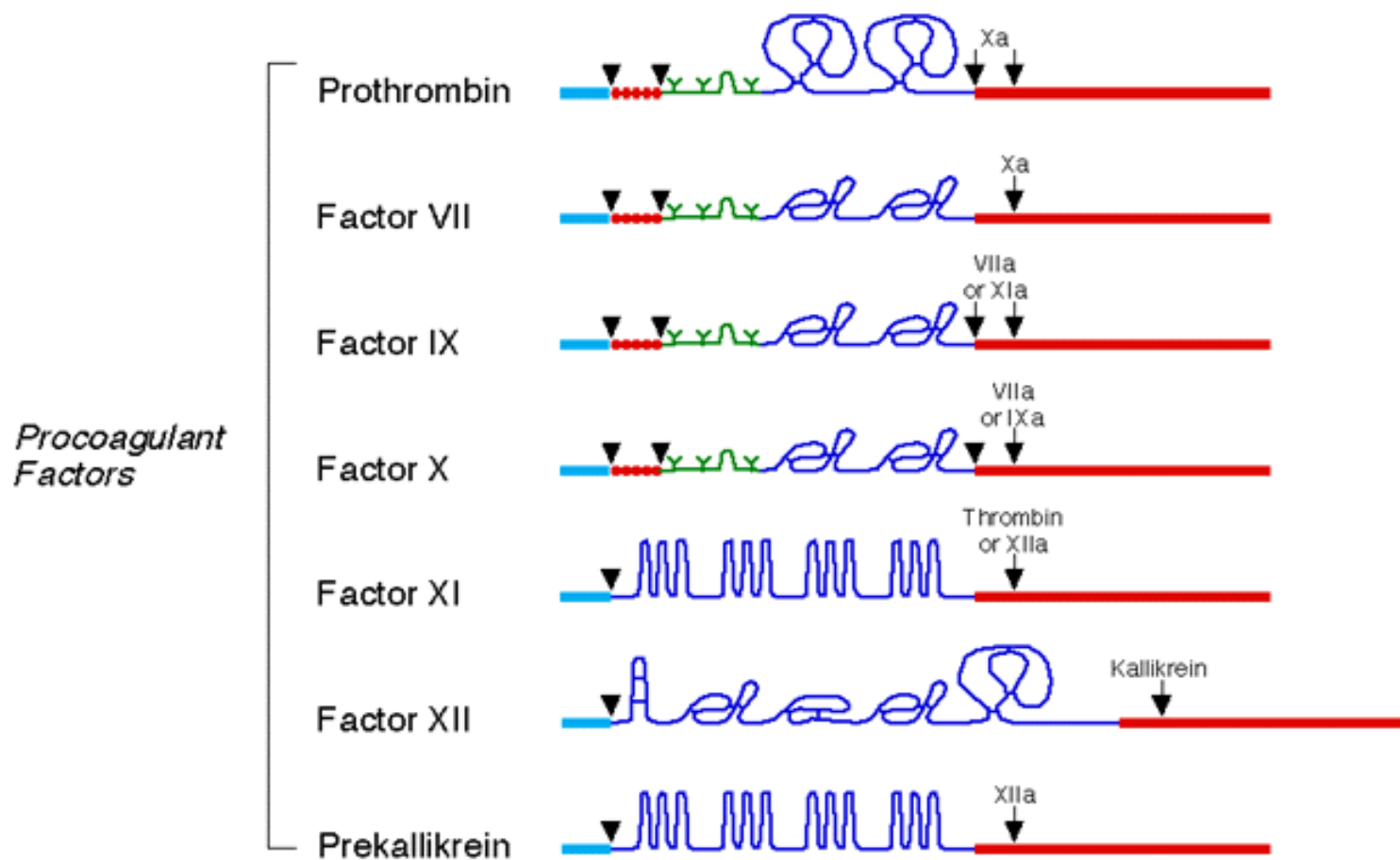
Fattori coagulativi

Inibitori fisiologici

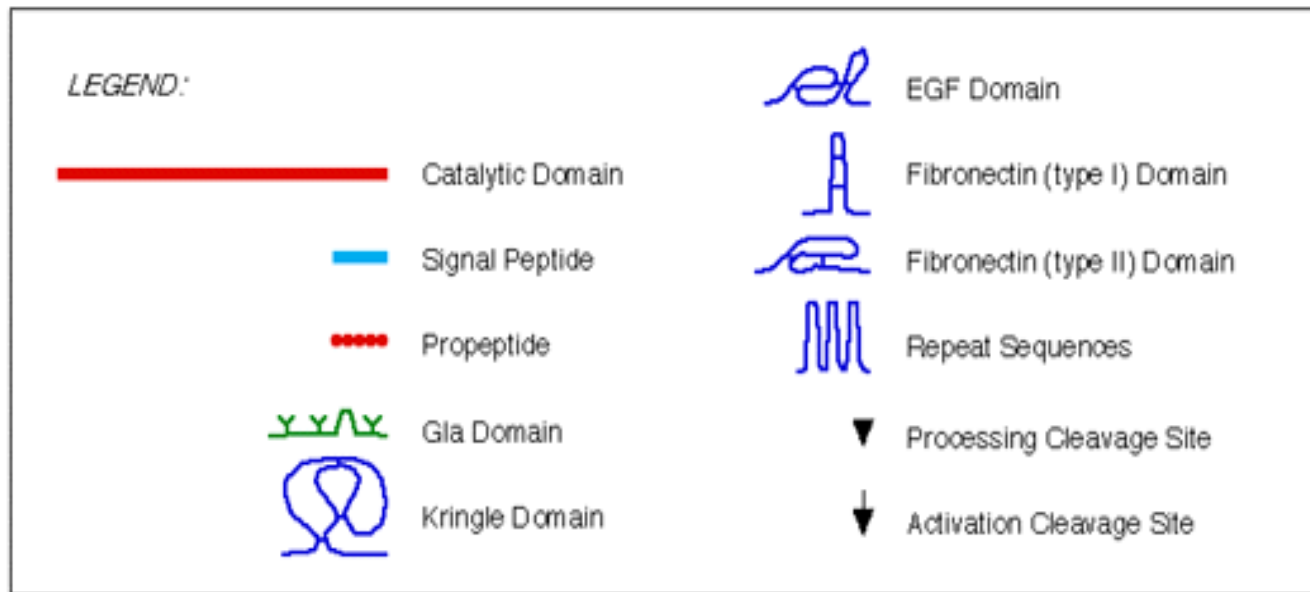
FATTORI COAGULATIVI

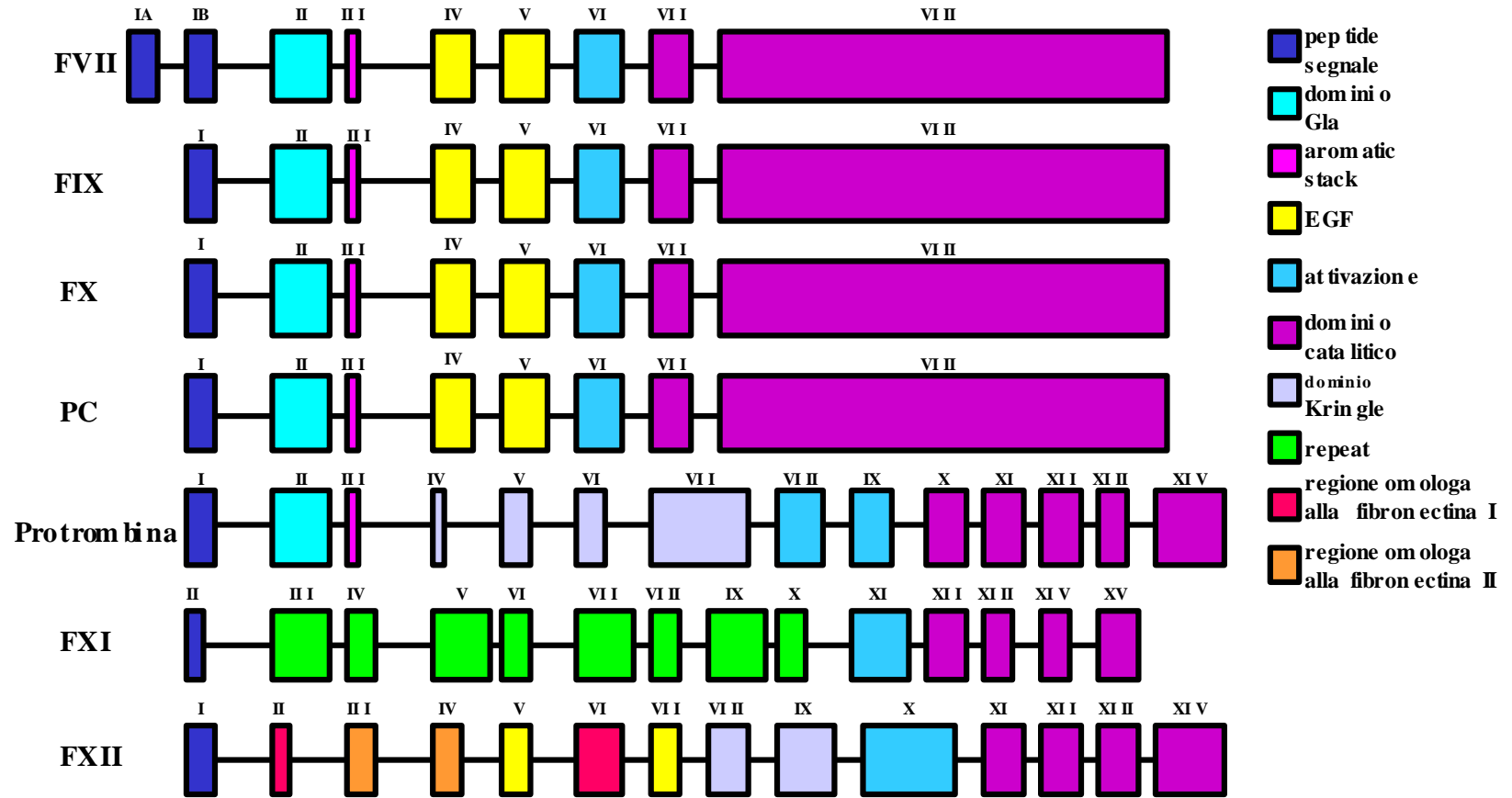
fattore	PM	Gene(Kb)	Cromos.	funzione
XIII	320,000			Stab.fib
XII	80,000	12	5	zimogeno
XI	160,000	23		zimogeno
IX	56,000	34	X	zimogeno
VII	50,000	13	13	zimogeno
VIII	330,000	185	X	cofat.
V	330,000	7,0	1	cofat.
X	56,000	22	13	cofat.
II	72,000	21	11	zimogeno
I	340,000		4	strut.

- 1- enzimi della coagulazione sono simili alle proteasi digestive tripsina e chimotripsina: proteasi seriniche
 - -dominio catalitico C-terminale: simile tripsina
 - dominio N-terminale: specifico



Dominii proteici nei fattori della coagulazione

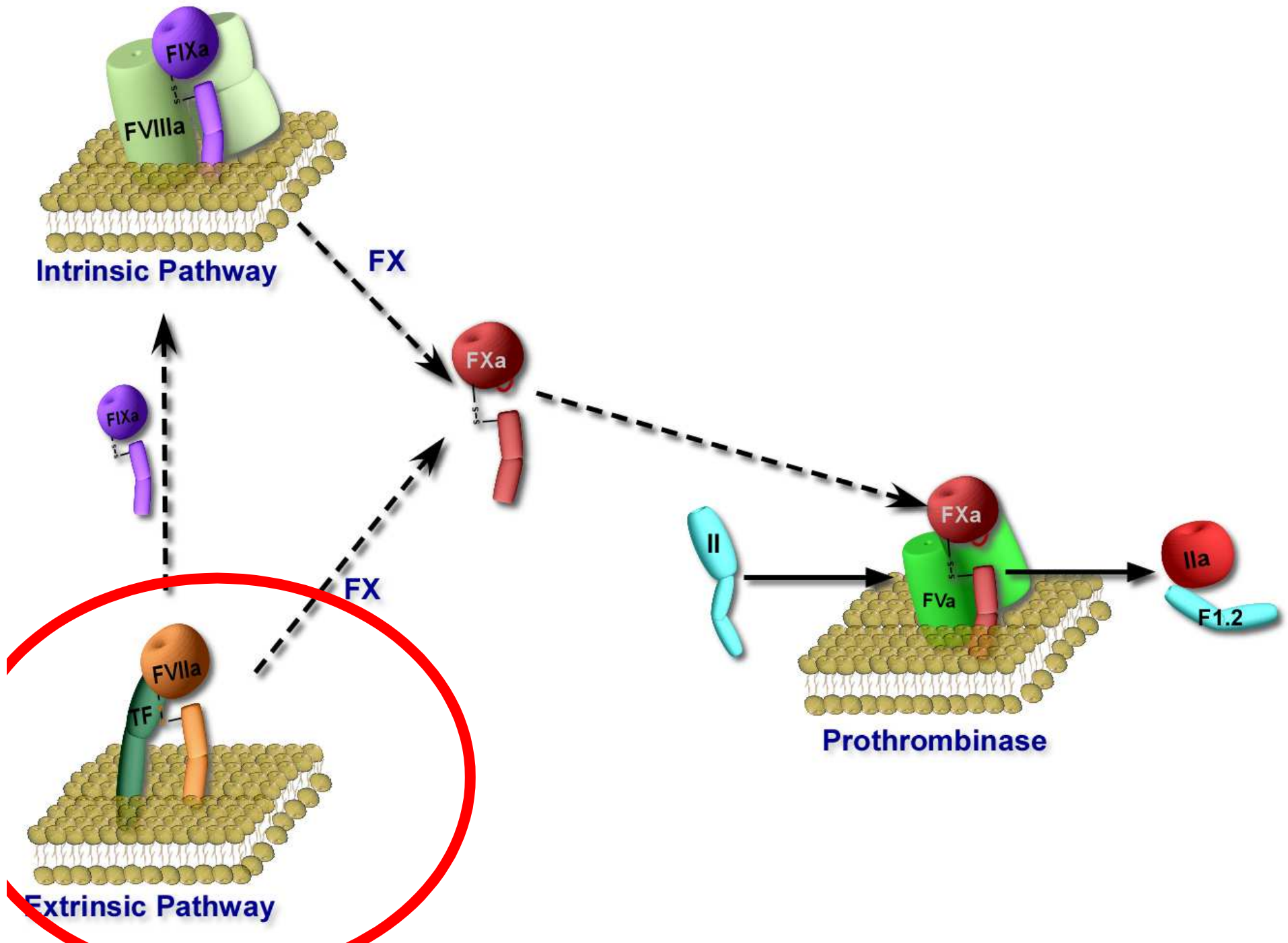




Struttura genica e proteica di serina proteasi della coagulazione

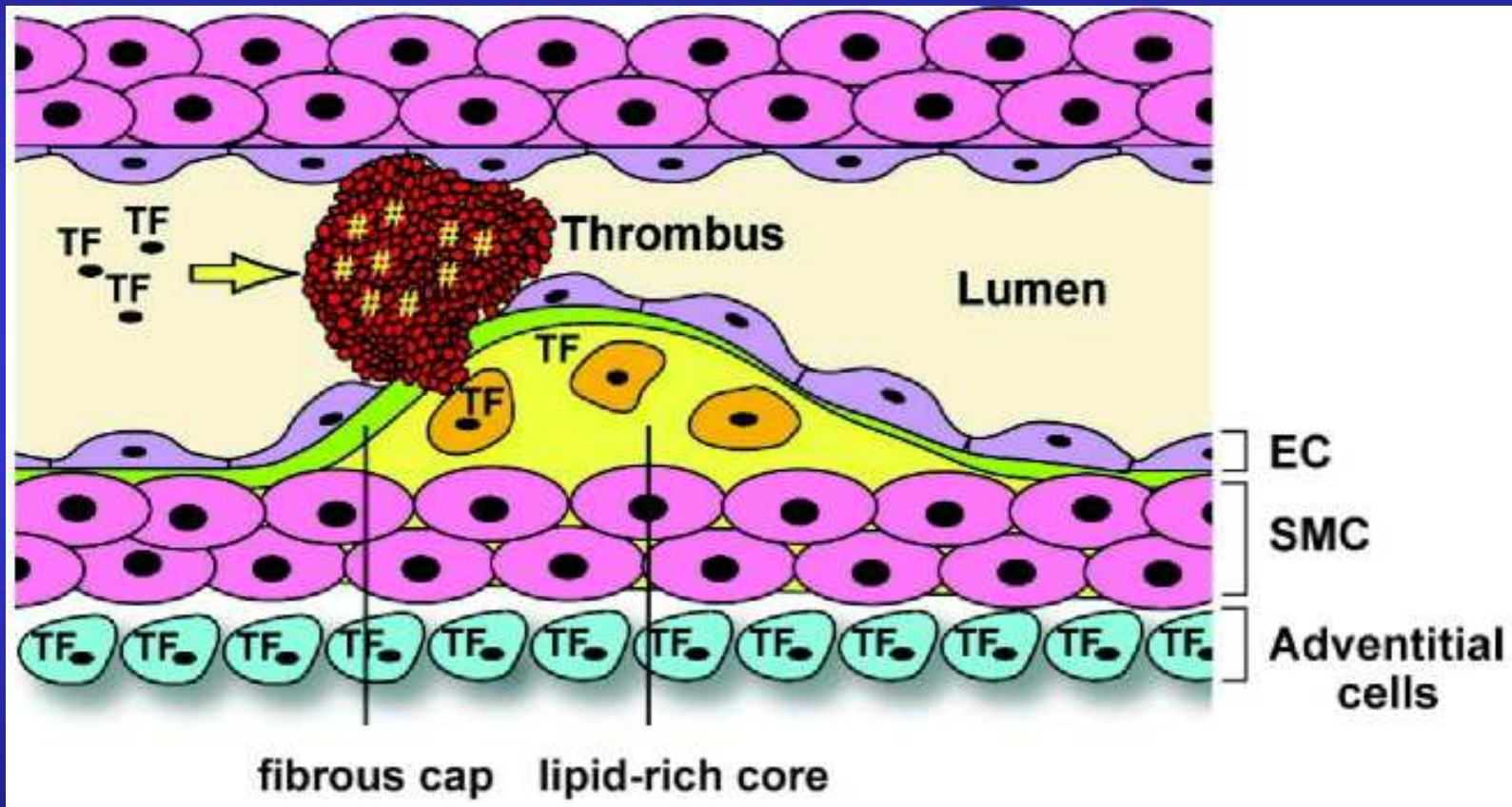
IL FATTORE TISSUTALE

- Proteina transmembrana che serve come **recettore** di superficie e **cofattore** essenziale per il FVIIa
- Legandosi il TF al FVIIa il complesso TF-FVIIa acquista attività catalitica e attiva i fattori X e IX
- Presente sulle membrane dei **fibroblasti**, cellule tumorali. *In condizioni normali non presente nella membrana di monociti e cellule endoteliali, nelle quali però può essere espresso a seguito diversi stimoli*

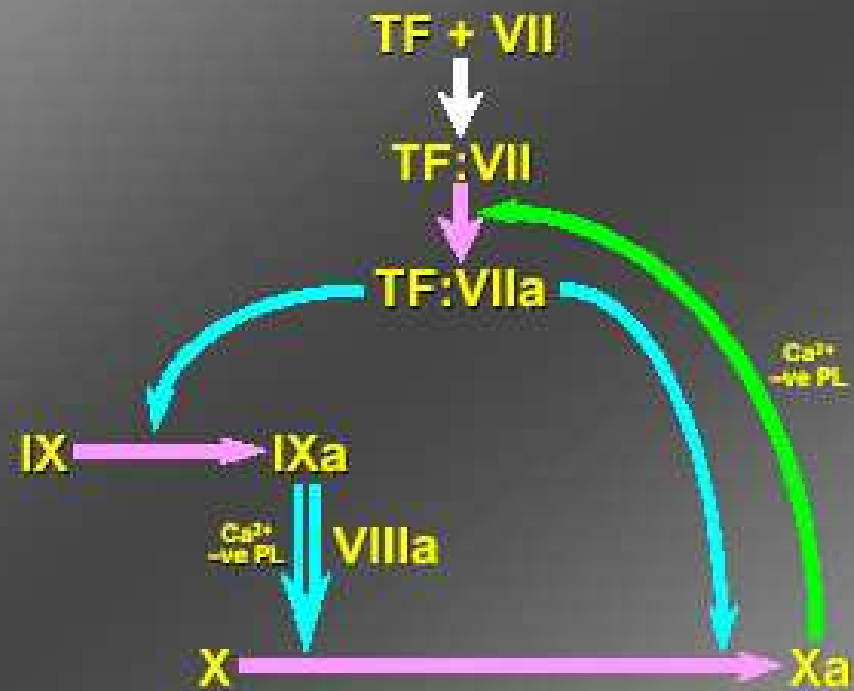


Agenti in grado di indurre l'espressione di TF sulle cellule endoteliali

- Virus, batteri
- Endotossine
- Complessi immuni
- Proteina C reattiva
- Interleuchine (IL-1, TNF)
- Trombina

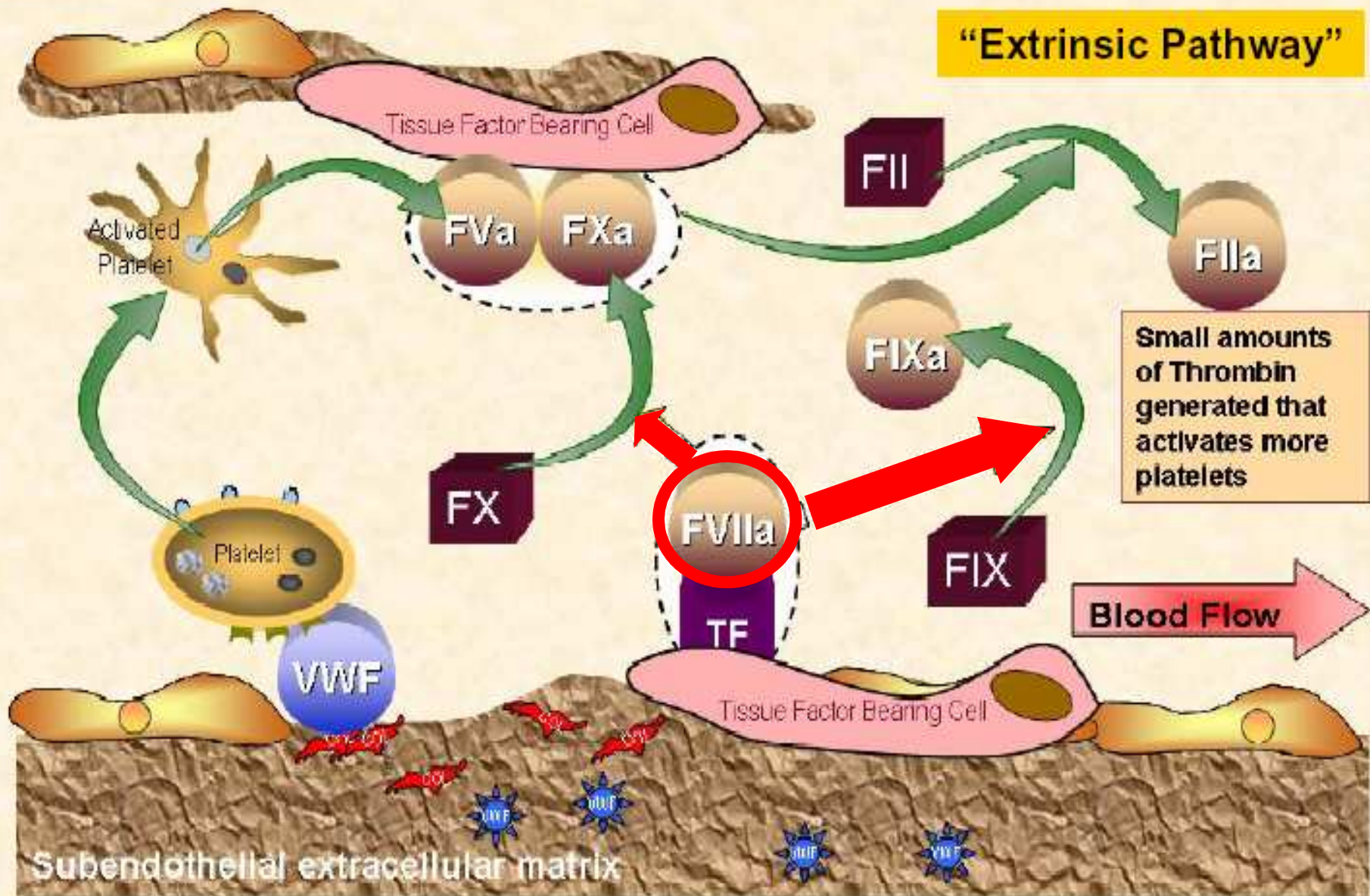


Initiation of clotting

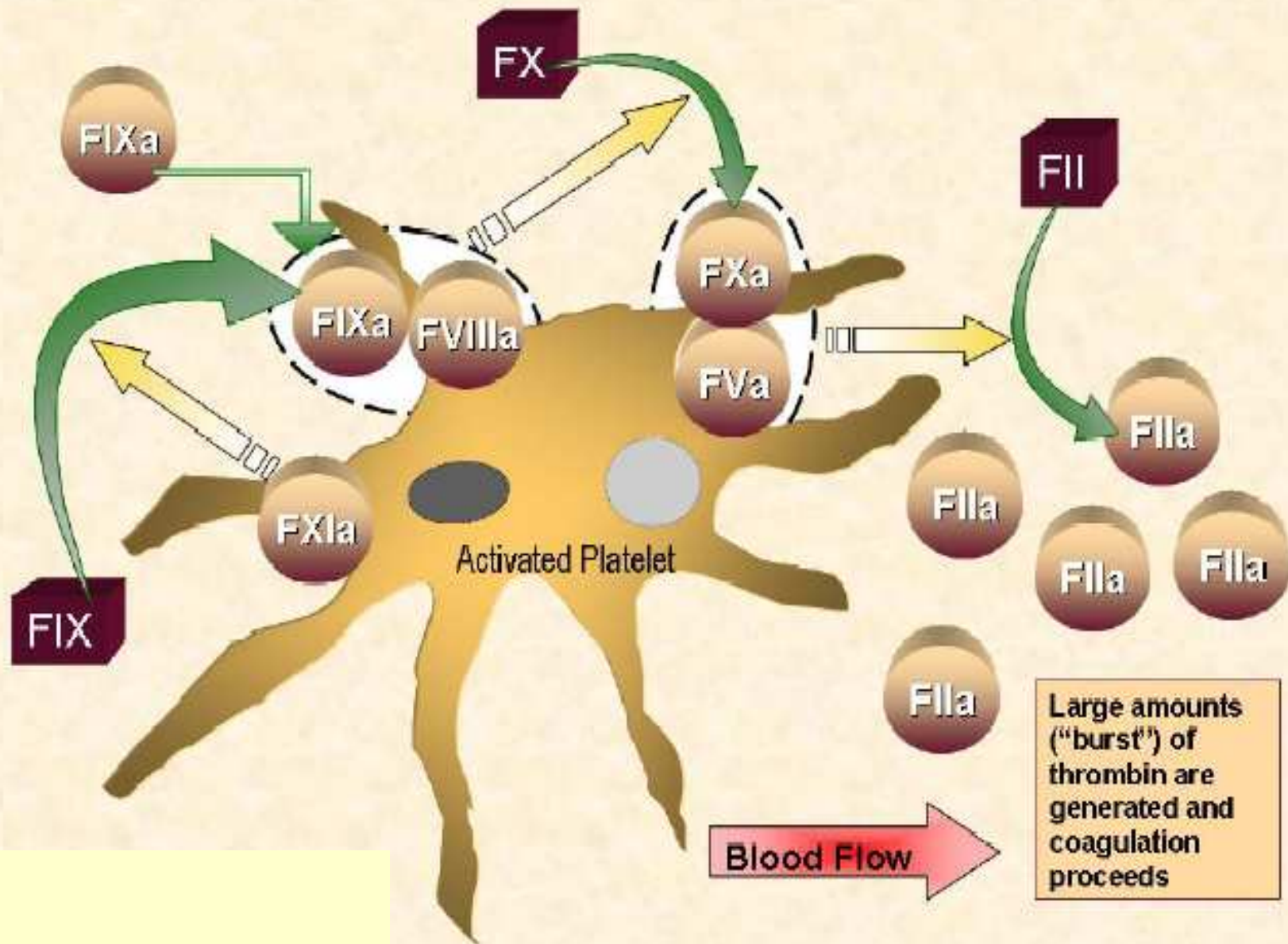


Initiation Phase

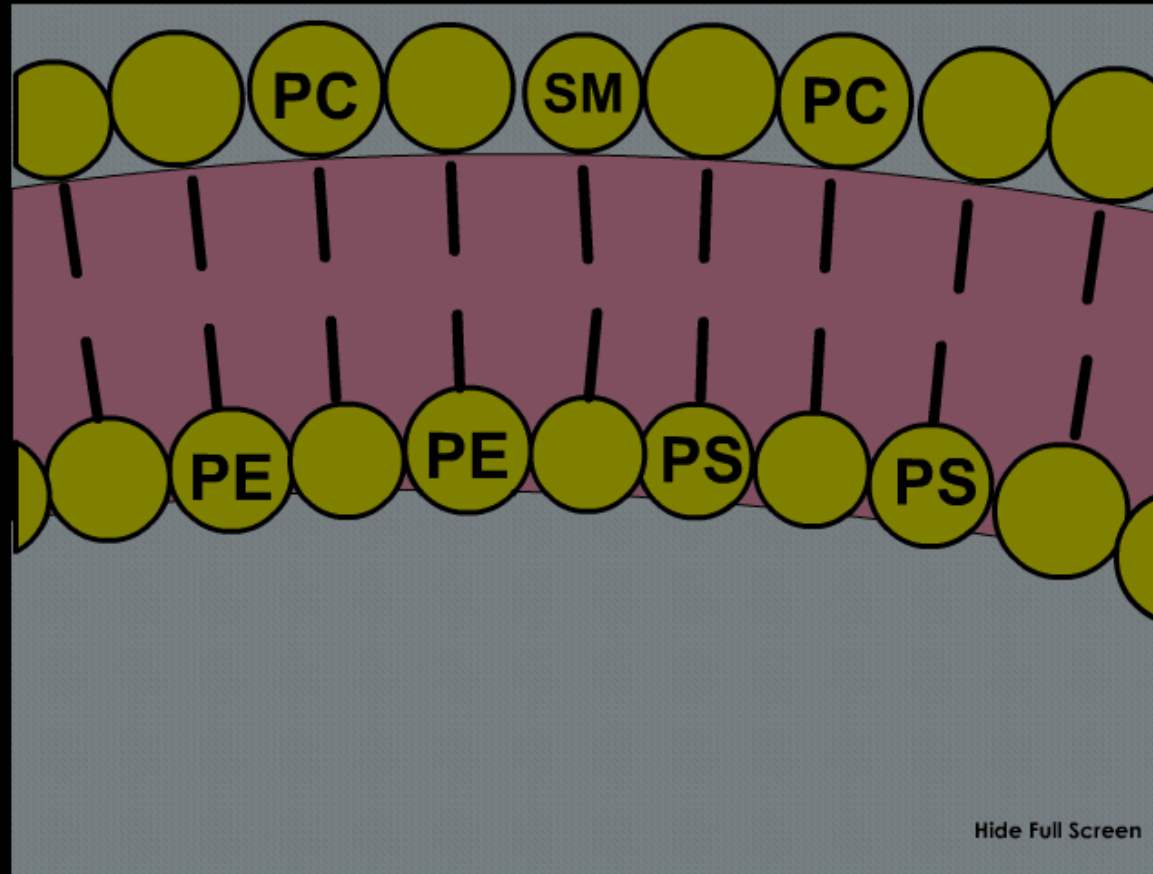
"Extrinsic Pathway"



Propagation Phase



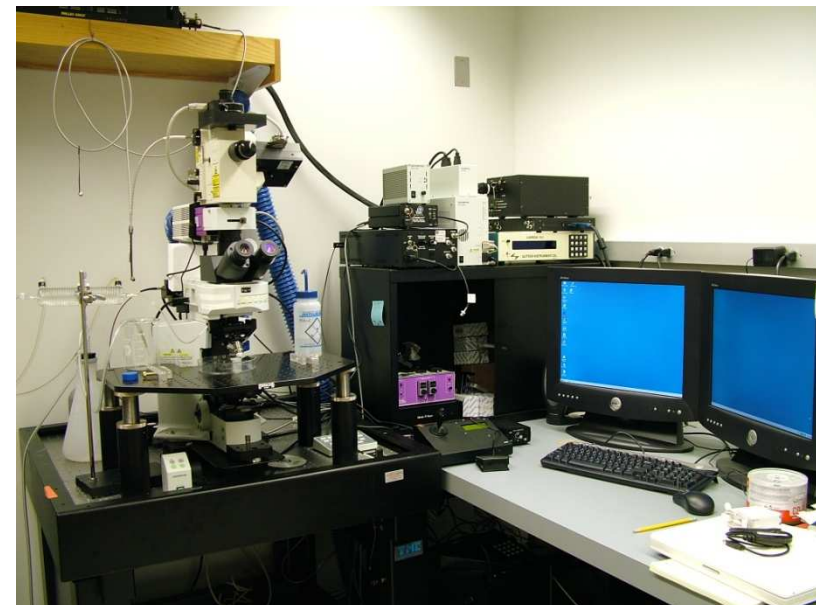
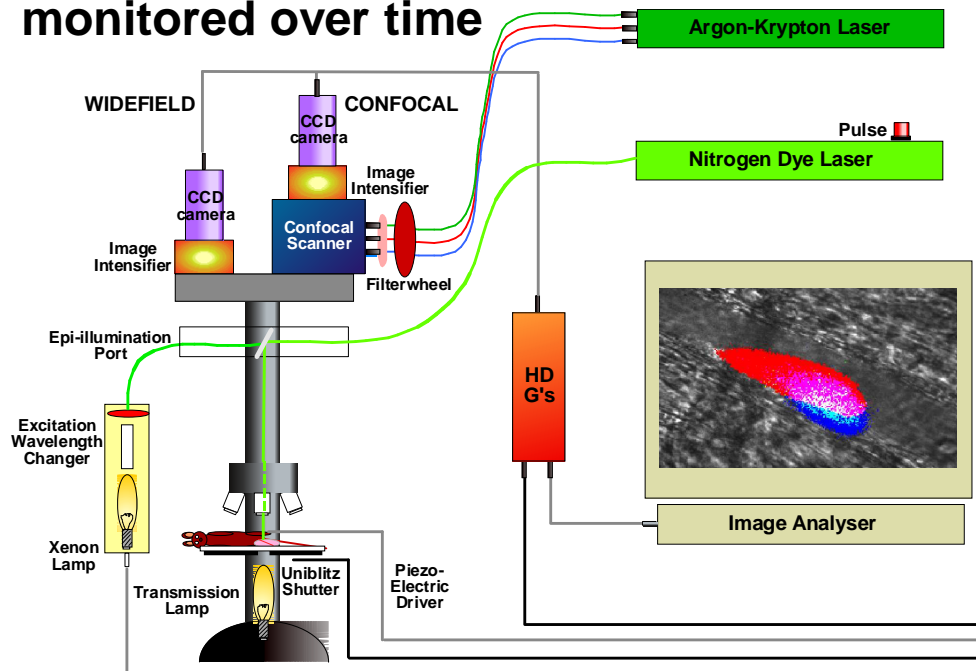
- Il tappo piastrinico contiene una striscia fosfolipidica ideale per l'attivazione della coagulazione



Platelet adhesion/activation
and coagulation
are strongly interconnected

Real-time Observation of Thrombus Formation: Cremaster laser injury model

- Preparation of mouse-isolate cremaster muscle
- Injection of antibodies (Alexa-555 anti-CD41;GBIIb/IIIa-Platelet recognition and Alexa-488 anti-Fibrin)
- Laser injury to cremaster artery—heat injury to vessel wall
- Accumulation of labeled platelets and fibrin deposition (clot formation) is monitored over time



Real-time *in vivo* imaging of thrombus formation

Platelets

Fibrin

4x speed

4x speed

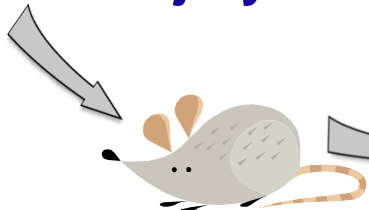


WT littermate: 6-8 weeks

HB, Balb/C: 6-8 weeks

Dose: 90 $\mu\text{g}/\text{kg}$ FXa^{16L}

Vessel Injury



Platelet accumulation

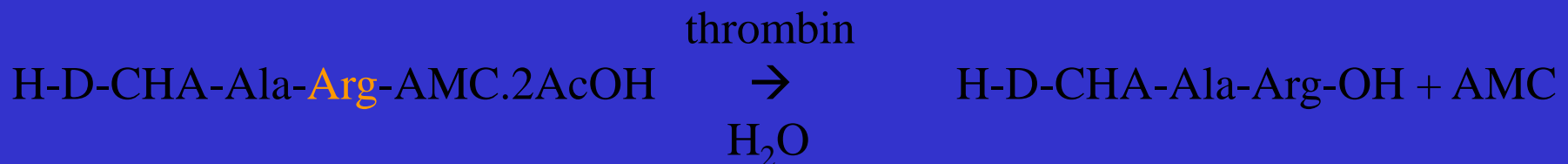
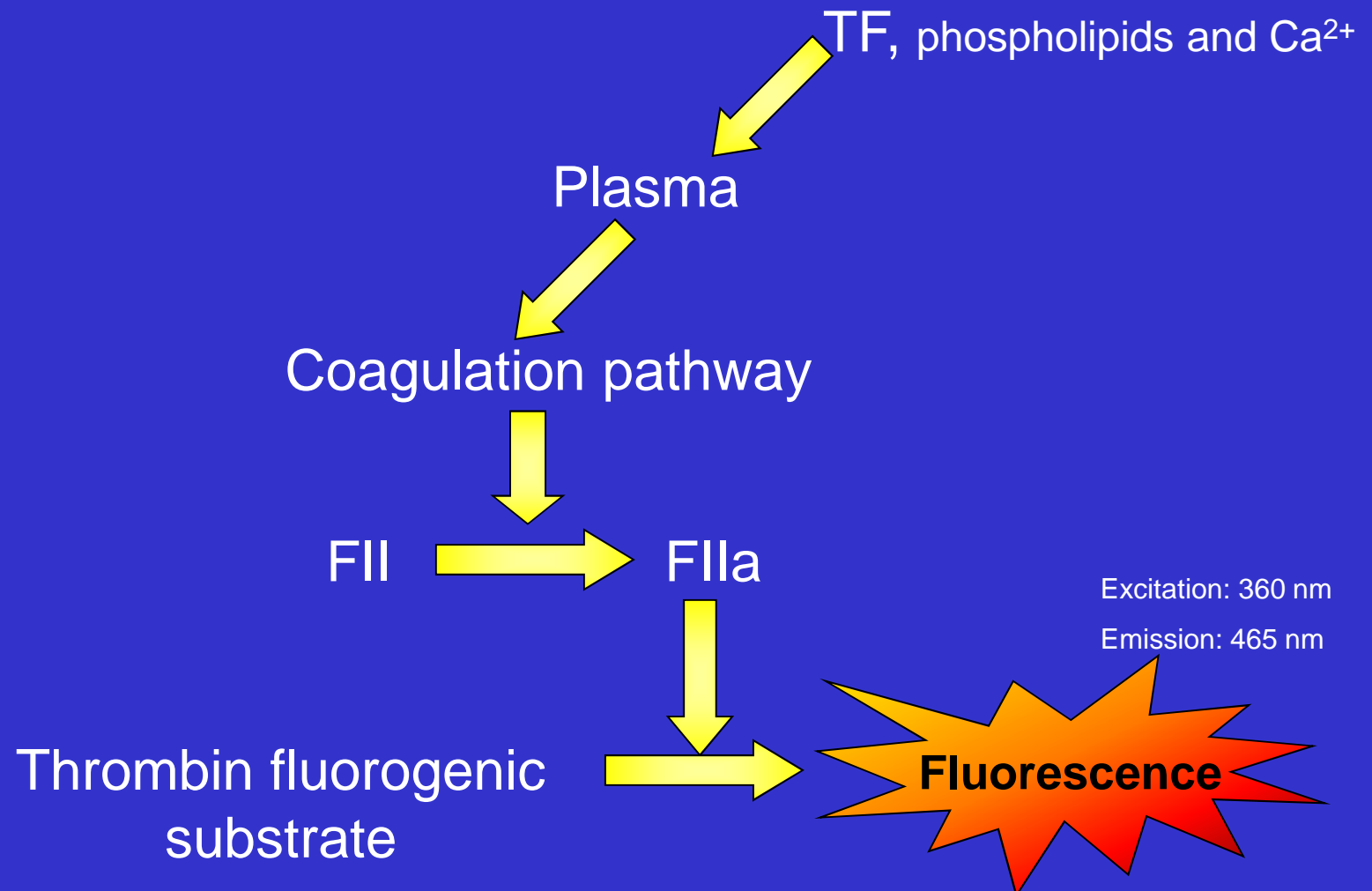
Fibrin deposition

(at old injury site)

Possiamo monitorare l'andamento di
una reazione a cascata così
complessa??

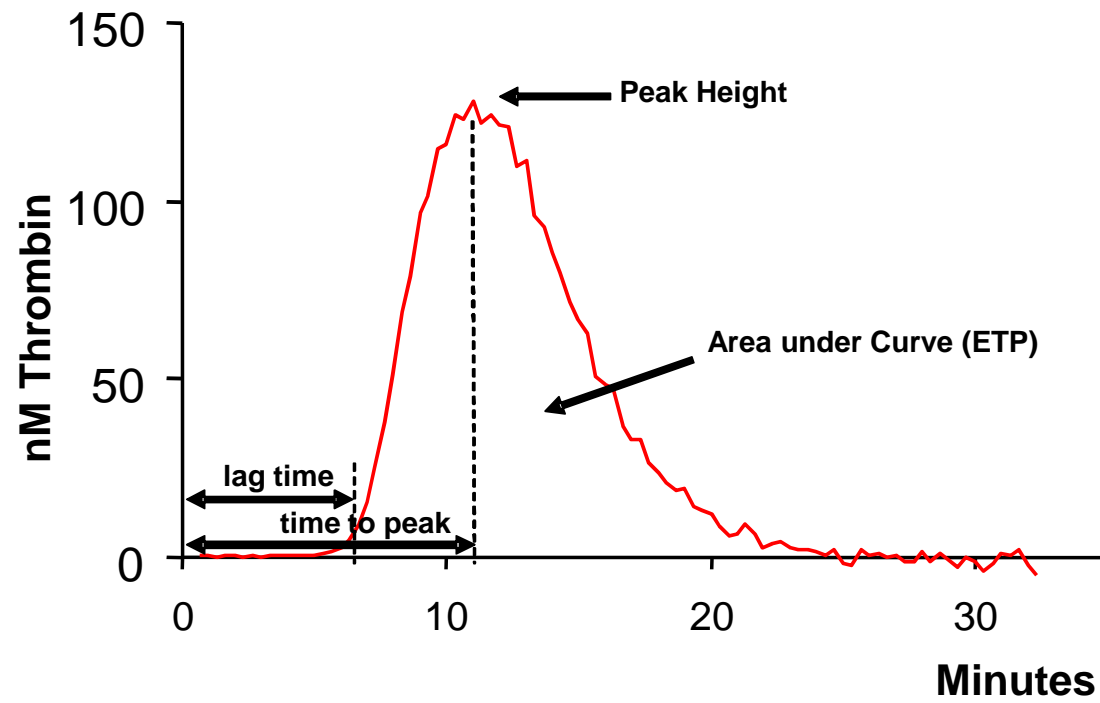
USO DI SUBSTRATI CROMO e FLUOROGENICI

Thrombin Generation Assay

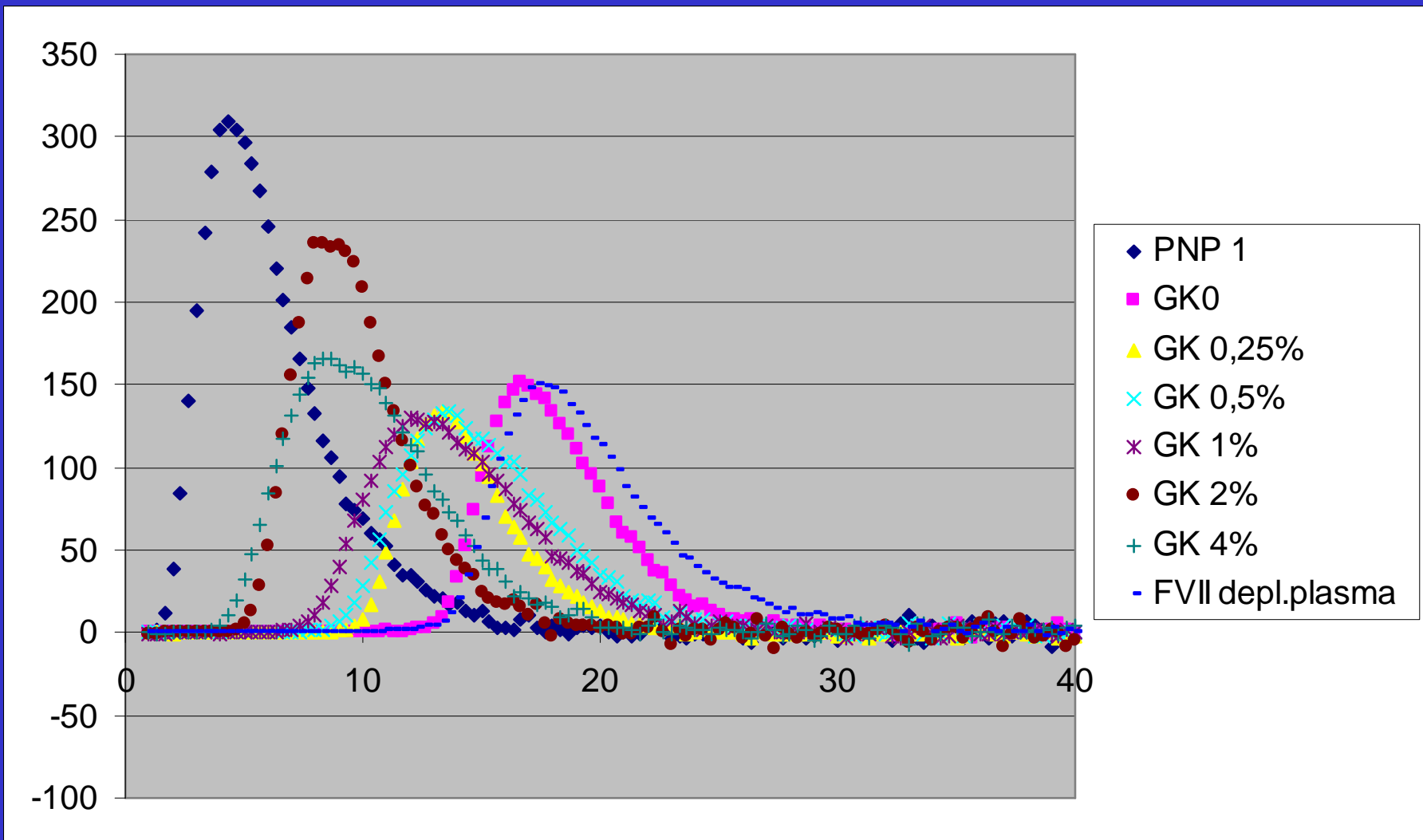


H-D-cyclohexylalanyl-alanine-arginine-7-amino-4-methylcoumarin.diacetate salt

Thrombin generation



Standard Curve in FVII deficient Plasma (G.K)



1) Cosa previene l'attività incontrollata delle serin proteasi?

2) quali sono i determinanti di specificità di queste interazioni precise e coordinate?