



# Three-dimensional printing with biomaterials in craniofacial and dental tissue engineering

Wen Liao<sup>1,2</sup>, Lin Xu<sup>2</sup>, Kaijuan Wangrao<sup>2</sup>, Yu Du<sup>2</sup>, Qiuchan Xiong<sup>2,3</sup> and Yang Yao<sup>2,3</sup>

<sup>1</sup> Department of Orthodontics, West China Hospital of Stomatology, Sichuan University, Chengdu, Sichuan, China

<sup>2</sup> State Key Laboratory of Oral Diseases, West China Hospital of Stomatology, Sichuan University, Chengdu, Sichuan, China

<sup>3</sup> Department of Oral Implantology, West China Hospital of Stomatology, Sichuan University, Chengdu, Sichuan, China

## ABSTRACT

With the development of technology, tissue engineering (TE) has been widely applied in the medical field. In recent years, due to its accuracy and the demands of solid freeform fabrication in TE, three-dimensional printing, also known as additive manufacturing (AM), has been applied for biological scaffold fabrication in craniofacial and dental regeneration. In this review, we have compared several types of AM techniques and summarized their advantages and limitations. The range of printable materials used in craniofacial and dental tissue includes all the biomaterials. Thus, basic and clinical studies were discussed in this review to present the application of AM techniques in craniofacial and dental tissue and their advances during these years, which might provide information for further AM studies in craniofacial and dental TE.

**Subjects** Biophysics, Dentistry, Drugs and Devices, Orthopedics

**Keywords** Additive manufacturing, Biological scaffold, Dental tissue, Tissue engineering, Craniofacial tissue

## INTRODUCTION

The development of tissue engineering (TE) and regeneration constitutes a new platform for translational medical research. It has already been an important kind of therapeutic method in craniofacial and dental field, such as trauma, skeletal disease, wound surgery and periodontal disease (*Rai et al., 2017*). There are several approaches to develop scaffolds, such as electrospinning, mold casting, salt leaching, sintering and freeze drying. Some of these methods are easy and inexpensive, such as mold casting and salt leaching. Some can fabricate three dimensional scaffolds with good structure with a comparatively high speed, such as electrospinning, however, none of them can solve the problem of solid freeform fabrication. Solid freeform fabrication of three-dimensional scaffolds with complex space structure, not only the irregularly curved external structure, but also the internal porous structure, is important in craniofacial and dental regeneration because of its anatomical limitations. Therefore, attempts to improve design and fabrication of bio-active scaffolds, especially on freeform fabrication comprise majority of studies in biomaterial researches.

Submitted 11 December 2018

Accepted 10 June 2019

Published 8 July 2019

Corresponding author

Yang Yao, yaoyang9999@126.com

Academic editor

Shi-Cong Tao

Additional Information and  
Declarations can be found on  
page 21

DOI 10.7717/peerj.7271

© Copyright  
2019 Liao et al.

Distributed under  
Creative Commons CC-BY 4.0

**OPEN ACCESS**

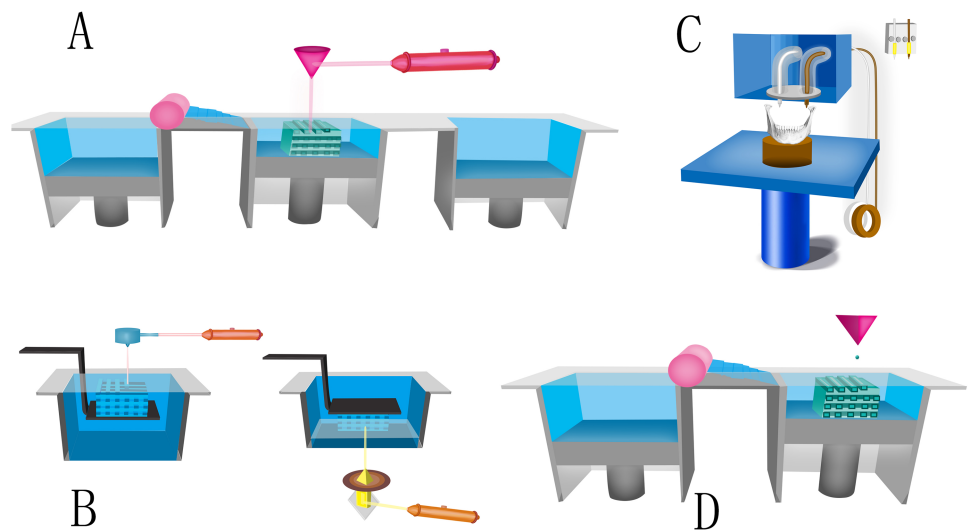
Recently, additive manufacturing (AM) has been applied for scaffold developing ([He et al., 2015](#)). This method was firstly introduced by Herver Voelcker in 1970 to describe the algorithms for the purposes of 3D solid modeling. AM has been widely used in industry because of its accuracy of shaping ([Torres et al., 2011a](#); [Torres et al., 2011b](#)). It helps researchers to meet the demands of solid freeform fabrication in TE, too ([Warren et al., 2003](#); [Obregon et al., 2015](#)). It also has unique advantages in fabrication of patient-specific scaffolds with multiple materials. In some recent advances, materials with live cells were used, making it possible to construct organ and tissue using AM ([Mannoor et al., 2013](#)).

Another hot spot of study in the field of tissue engineering combined with material manufacturing methods is electrospinning. Electrospinning uses electrostatic principle to manufacture the nanofibers required for TE applications ([Zamani et al., 2018](#)). There are mainly three types of technique: blending electrospinning, coaxial electrospinning, and emulsion electrospinning; they share the same basis ([Lu et al., 2016](#); [Tong, Wang & Lu, 2012](#)). There is a high electric field applied to draw a polymer solution between the injection needle and a collector. The polymer forms a suspended drip and is stretched into a conical shape called “Taylor Cone” by the high voltage power. Then, the charged droplet forms a charged jet by breaking free from the surface tension of the top droplet. Due to the evaporation of the solvent or the curing cooling of the solute and melt, the charged jet finally condenses into filaments and deposits on the collecting plate in the form of nonwovens ([Barnes et al., 2007](#); [Nair, Bhattacharyya & Laurencin, 2004](#); [Chan et al., 2009](#)). The nanofibers prepared by electrospinning have large specific surface area and high porosity in three-dimensional structure, which makes electrospinning nanofiber membranes have a wide application value in many fields ([Qian et al., 2011](#); [Chung et al., 2010](#)). It is worth mentioning that bio-electrospraying and cell electrospinning, both based on this principle, were firstly used to deal with living cells and whole organisms in 2005/06 ([Jayasinghe, Qureshi & Eagles, 2006](#); [Townsend-Nicholson & Jayasinghe, 2006](#)). A series of studies have confirmed that this high-strength electric field drive technology, naming bio-electrospraying, showed no significant side effect on the bioactivity of living samples ([Jayasinghe, 2011](#)). Cell electrospinning is a leading technology in the formation of cell fibers and stents that can be used to create a variety of biological structures, from simple cell stents and diaphragms to more complex structures ([Jayasinghe, 2013](#)). In the recent years, bio-electrospraying and cell electrospinning have attracted significant increasing amount of interest.

Here we review the application of AM techniques in craniofacial and dental TE. First, we will describe the types and strategies of four typical AM printers used by tissue engineering researchers most frequently, along with their advantages and limitations. Then, we will present recent advances of AM related with craniofacial bone, craniofacial cartilages and dental tissue. Finally, we will look ahead to recommend the future possible AM research field in craniofacial and dental TE.

## SURVEY METHODOLOGY

PubMed and Web of Science databases were searched (until January 2018) using the following free-text terms: additive manufacturing, craniofacial/dental tissue engineering.



**Figure 1** Four kinds of typical AM printers. (A) Schematic of SLS. The fabrication chamber is settled at the base, filling with tightly compacted plastic powder. When the laser beam moves under the guidance of the scanner system and computer code, precisely shaped monolayer is printed by causing the temperature to rise above the melting point of plastic powder. (B) Schematic of SLA. A computer-controlled laser beam moves and cures the top liquid resin by photopolymerisation. The polymerized resin will adhere to a building platform for support. After finishing the first layer, the building platform drops a defined distance under the liquid surface and the laser repeats the above steps to cure a second layer. (C) Schematic of FFF. Thermoplastic polymeric filament is extruded as the “ink” from a high temperature nozzle (typically 95 °C–230 °C) because of a solid-semiliquid state transition. After printing the pattern of the first layer on a surface, either the nozzle rises, or the platform descends in the Z-axis direction at a thickness of a mono by the control of computer. The process is repeated until structure generation is complete. (D) Schematic of binder jetting: Liquid binder is printed as ink onto powder container. Then a new consecutive solid thin layer of free powder will be put on the binder. This printing process repeats until finishing the work.

Full-size [DOI: 10.7717/peerj.7271/fig-1](https://doi.org/10.7717/peerj.7271/fig-1)

## AM Approaches in craniofacial and dental TE

### Selective Laser Sintering (SLS)

SLS was developed by Carl Deckard at the University of Texas and described in his master’s thesis (Deckard, 1991; Deckard, Beaman & Darrah, 1992; Beaman & Deckard, 1990). Its fundamental principle is to control the laser concentrated infrared heating beam to melt free powders together to generate a precise structure. In a SLS printer, a fabrication chamber is settled at the base, filling with tightly compacted plastic powder. The temperature of the chamber is kept just below the melting point of free powder. While the laser beam moves under the guidance of scanner system and computer code, precisely shaped monolayer is printed by causing the temperature to rise above the melting point of plastic powder (Melchels, Feijen & Grijpma, 2010) (Fig. 1A). As a result, morphology and melting temperature of the powder are considered as the two crucial parameters in laser sintering (Mazzoli, 2013). According to the mechanism of SLS, the heating temperature should be able to melt the surface layer. The molten materials on the surface then work as binder to connect neighboring non-molten particle cores (Mazzoli, 2013). This so-called “partial melting” phenomenon was modeled first by Fischer et al. (2002). The laser sintering

powder is commercially available. They are polymeric materials such as poly(L-lactide) (PLLA) /carbonated hydroxyapatite (CHA) ([Zhou et al., 2008](#)), polyvinyl alcohol (PVA) ([Chua et al., 2004](#)) and poly-ε-caprolactone (PCL) ([Williams et al., 2005](#)). In a SLS printer, polymeric powder have a 50 μm mean particle size diameter ([Mazzoli, 2013](#)).

Many advantage of SLS method, such as accuracy, fast fabricating, low price, elective powder type, no need of supporting material, can be documented ([Mazzoli, Germani & Moriconi, 2007](#)). The disadvantage of SLS is that with crucial laser power and scanning speed, there is limit in the size of object fabricated with the commercially obtained machines. What's more, this method cannot fabricate scaffolds with hydrogel material ([Duan & Wang, 2011](#)).

### **Stereolithography (SLA)**

SLA printing was firstly published in 1986, in U.S. patent *Apparatus for production of three-dimensional objects by stereolithography* ([Hull, 1986](#)). He first exploited the spatially controlled solid transition of liquid-based resins by photopolymerization to produce complex structures layer-by-layer in SLA approach ([Skoog, Goering & Narayan, 2014](#)). In brief, a computer-controlled laser beam moves and cures the top liquid resin by photopolymerization. The polymerized resin adhere to a building platform for support. After finishing the first layer, the building platform drops a defined distance under the liquid surface and the above steps repeats to cure a second layer ([Fig. 1B](#)).

This technique was later modified by application of digital light projector, known as digital light processing (DLP). It enables architectures built from the bottom of the building platform. After finished the first layer, the platform raises a short distance from the liquid surface and curing procedure repeats. It looks like the structure is lift by the platform, so that the resin required is significantly reduced. Since DLP derived initially from SLA and they share close concepts, in this review, we use SLA to refer to them both. Taking advantage of the extreme accuracy of laser light, SLA printer has been largely used to build complex and precise structures. Most commercial systems have the capacity to fabricate structures with a resolution of 50 μm. On the other hand, the major limitation of SLA also lies on stereolithography, which limits choices of resins. Most of SLA resins are based on low molecular weight, multi-functional monomers for they formed highly cross-linked networks. Poly (propylene fumarate) (PPF) is the most often used polymer in the fabrication of tissue scaffolds with SLA because of its favorable biocompatibility and photo-cross linking functionality. Although only a limited selection of photocurable resins have been used in SLA, such as PPF and polyurethane (PU) ([Hung, Tseng & Hsu, 2014a](#)), efforts have been made to improve the features of photocurable materials for TE usage, in order to create biodegradable materials ([Skoog, Goering & Narayan, 2014](#)) and cell-compatible photocurable hydrogels, in the past decade.

### **Fused deposition modeling (FDM)**

FDM is another common AM technique, which was first used in the 1990s ([Cai, Azangwe & Shepherd, 2005](#)). The printing process of FDM is based on layer-by-layer deposition of thermoplastic polymers. Due to a solid-semiliquid state transition, thermoplastic polymeric filament is extruded as the “ink” from a high temperature nozzle (usually 95 °C–230 °C).



After printing the pattern of the first layer on a surface, either the nozzle rises, or the platform descends in the Z-axis direction at a thickness of a monolayer under the control of computer. The process is repeated until structure generation is completed (*Korpela et al., 2013*). Depending upon the polymer material and the design, the FDM printer usually prints 3D structures with a typical thickness of 100–300  $\mu\text{m}$  (*Cai, Azangwe & Shepherd, 2005*) (Fig. 1C).

This technique has unique advantages because of its wide-ranged operating temperature, user friendly control system, and large number of commercial platforms. Several kinds of biodegradable materials have been used in the process, including polylactic acid (PLA), PVA, PCL, poly (D, L-lactide-co-glycolide) (PDGA) and poly (D, L-lactide) (PDLA). Several polymers, such as PLA, PCL and PVA, are extensively utilized for their considerable biocompatibility and biodegradation. With some modification of the printer, hydrogels such as alginate, collagen, decellularized ECM, and marine products such as biogenic polyphosphate (Bio-PolyP) and biogenic silica (Bio-Silica) (*Wang et al., 2013; Wang et al., 2014*) can be used as well, providing possibility of loading live cells in printing progress.

However, FDM has a significant drawback, which is the lowest precision among the four methods. The minimal scale of the printing bar is about 0.1 mm (*Cai, Azangwe & Shepherd, 2005*). It is also difficult to generate micro-porous structures for bone TE without further modifications. In addition, as it is printing in an open space, external supports is needed to get rid of the collapse of structures. After finishing the printing, those supports must be removed carefully.

### **Binder Jetting**

Binder jetting is a technology developed at almost the same period with FDM. Its first development is in the early 1990s (*Sachs, Cima & Cornie, 1990*). In 2010, the first binder jetting machine was commercially obtained. Its basic working process shares many similarities with inkjet printing (*Meteyer et al., 2014*). In a binder jetting printer, liquid binder is printed as “ink” onto powder container. Then a new consecutive solid thin layer of free powder will be put on the binder. This printing process repeats until work finishes. The structures printed by binder jetting printers have layer thickness among 76–254  $\mu\text{m}$  (*Torres et al., 2011a; Torres et al., 2011b*) (Fig. 1D). The advantage of this method is that binder jetting printer has various choices of printable materials: high-performance composites are used to produce tough, strong, colored, and best resolution models, elastomeric materials which give rubber-like properties or casting material which enables the creation of metal prototypes (*He et al., 2015*). Another advantage is parts can be produced with no need of supporting structure, so it is more applicable in complicated 3D structure establishment (*Gokuldoss, Kolla & Eckert, 2017*). This method has a faster printing speed than other AM methods, which can be accelerated by using multiple print heads. On the other hand, the disadvantage of this method is also clear. A lot of post-printing treatment increased the time and financial cost. The control of pore existence, size and shape is difficult because material is stacked, not melted together.

## Current status and challenges of AM applications for craniofacial bone, cartilage and dental tissues

### *AM application in craniofacial bone TE*

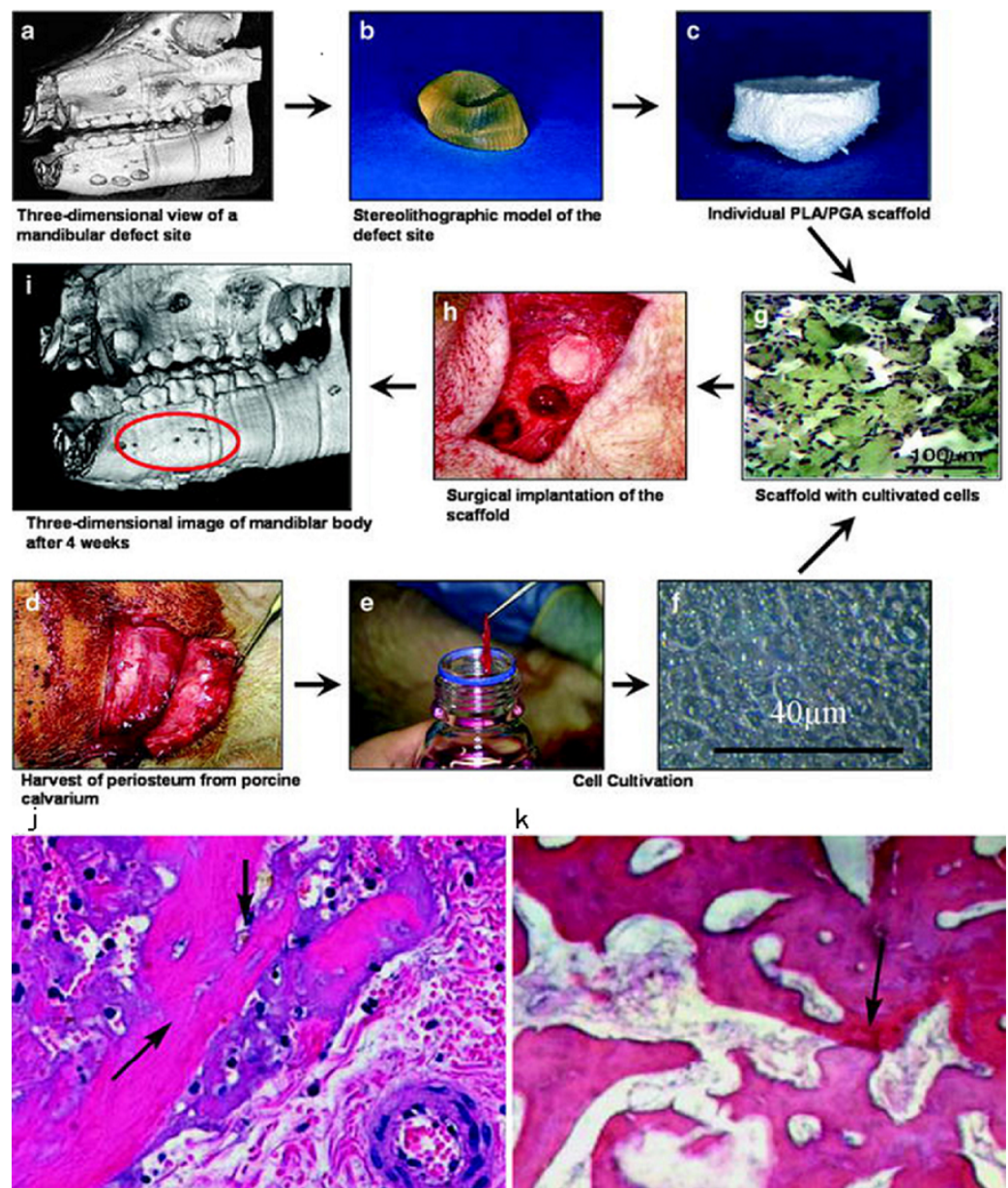
*Polymer biomaterials for craniofacial bone TE.* Fabricating maxillofacial bone scaffold is a major application of AM technology in craniofacial usage. The selection of an ideal bone graft material relies on multiple factors such as material viability, graft size, porosity, hydrophilic, biodegradability, osteoconductivity and osteoinductivity. It was first reported that synthetic polymeric materials could generate AM bone scaffolds. Many polymers are printable, for they often have proper melting ranges to fulfill the technique requirement of shaping with FDM or binder jetting. As far back as in 1996, PLA was used as AM material in computer aided design (CAD) bone generation ([Giordano et al., 1996](#)). After that, other polymeric scaffolds have been increasingly developed in AM techniques, such as PCL ([Williams et al., 2005](#); [Lohfeld et al., 2012](#); [Korpela et al., 2013](#); [Van Bael et al., 2013](#); [Temple et al., 2014a](#)), poly(lactic-co-glycolic acid) (PLGA) ([Luangphakdy et al., 2013](#)), poly(trimethylene carbonate) (PTMC) ([Blanquer, Sharifi & Grijpma, 2012](#)) and so on. As a widely used biomedical material, PLA has good biocompatibility as implants with FDA clearance. Printed PLA bars have physical properties of maximum measured tensile strength. The maximum measured tensile strength of low molecular weight PLLA (53 000) is  $17.40 \pm 0.71$  MPa, while that of high molecular weight PLLA (312,000) is  $15.94 \pm 1.50$  MPa ([Giordano et al., 1996](#)). PCL is an alternative with PLA because it does not release acid in PLA remodeling. This means it is more resistant *in vivo*. PCL also has a lower glass transition temperature and melting temperature, making it superior to PLA in certain bone grafting applications. For instance, PCL can be easily blended with other materials, including tricalcium phosphate (TCP), hydroxyapatite (HA) and bioactive glass (BAG), due to its low melting temperature ([Korpela et al., 2013](#)). In addition, the compressive module of PCL can be increased up to 30–40% by adding 10 wt % of BAG.

As modifications for the mechanical performances ([Duan & Wang, 2010](#)), polymers are also blended in defined ratios to make printable composites, such as PCL/PLGA by FDM ([Shim et al., 2014](#)) and PLGA/PVA by binder jetting ([Ge et al., 2009](#)). PVA also serves as a porogen in the printed architectures by taking advantage of its water-soluble properties. PVA-blended HA was printed by SLS to study the feasibility of composite scaffold ([Simpson et al., 2008](#)). SEM observations showed significant improvements in the sintering effects and to be a suitable material when processed by SLS for TE scaffolds.

*Cells and animal models used in craniofacial bone TE.* The selection of cell is important for bone TE. For orthopedic and maxillofacial researches, primary stem cells as bone marrow stromal cells (BMSC) ([Fedorovich et al., 2009](#); [Rath et al., 2012](#)) and adipose derived stem cells (ADSC) ([Temple et al., 2014a](#)) are widely applied to seed cell types. Fibroblasts are used for viability test and proliferation essay, as well as human multi-potent dental neural crest-derived progenitor cells (dNC-PCs) ([Fierz et al., 2008](#)). Multiple bone cell lines are applied in AM studies, including MC3T3-E1 ([Leukers et al., 2005](#); [Khalyfa et al., 2007](#); [Lan et al., 2009](#); [Melchels, Feijen & Grijpma, 2010](#); [Blanquer, Sharifi & Grijpma, 2012](#)), SaOS-2

(Duan & Wang, 2010; Wang et al., 2013), C3H/10T1/2 cells (Inzana et al., 2014) and MG-63 (Feng et al., 2014a; Feng et al., 2014b). With osteogenic induction, the attached bone cells not only exhibited cell viability around 60%–90%, but also kept potential of osteogenic differentiation which is confirmed by observing bone metabolism related RNA and protein expression, such as runt-related transcription factor 2 (RUNX2), bone morphogenetic proteins (BMPs), alkaline phosphatase (ALP) and osteonectin (ON) activity. For cells used in craniofacial bone TE, there are different advantages for different cells. Bone cell lines as MC3T3-E1, SaOS-2, c3h/10T1/2, MG-63 were often used for initial screening of biological activity of materials (Przekora, 2019). Since these cells are tumor-derived cell lines or immortalized osteoblast cell lines, their gene expressions are quite different from those of primary cells (Pautke et al., 2004). The best seed cells for craniofacial bone TE are still considered to be primary OBs because of their behavior in studying osteoconductive and osteopromotive properties (Przekora, 2019). The advantage of using stem cells also include testing the osteoconductive ability of printing materials (Temple et al., 2014b). What's more, many kinds of tissue can be the source of autologous stem cells.

Several animals had been taken in AM mandible scaffold research. Rabbits are most frequently used in the study of mandibular bone repair (Alfotawei et al., 2014). A protocol described the usage of three-dimensional printed scaffolds with multipotent mesenchymal stromal cell (MSCs) in mandibular reconstruction of rabbits. They used BMSC and ADSC from rabbits (Fang et al., 2017). One of the previous studies was performed on six mature minipigs (Fig. 2). The researchers created four mandibular defects on each pig. After the defect sites were modelled by CAD/CAM techniques, scaffolds with complex geometries and very fine structures were produced by AM technology. Then the autologous porcine bone cells were seeded on these polylactic acid/polyglycolic acid (PLA/PGA) copolymer scaffolds. Implanting these tissue-constructs into the bone defects supported bone reconstruction (Meyer, Neunzehn & Wiesmann, 2012). What's more, in a recent study, researchers proved that the craniofacial reconstruction including mandible could be achieved through 3D bioprinting. They presented an integrated tissue-organ printer (ITOP) that can fabricate stable, human-scale tissue constructs of any shape. They also found vascularized bone growth in the central and peripheral portion *in vivo* trails of rats (Kang et al., 2016). For periodontal bone regeneration, at least 4 mm augmentations of craniofacial bone had already been achieved with synthetic monetite blocks. 3D printing TCP plates were used as onlay grafts in periodontal surgery. The 4.0- and 3.0-mm high blocks were filled with newly formed bone with 35% and 41% of respective volumes (Torres et al., 2011a; Torres et al., 2011b). These 3D-printed customized synthetic onlay grafts were further used in dental implant surgery to achieve bone augments (Tamimi et al., 2014). Direct writing (DW) technology had been applied to produce a TCP scaffolds to repair the rabbit trephine defect. The scaffolds had micropores ranging from  $250 \times 250 \mu\text{m}$  up to  $400 \times 400 \mu\text{m}$ . After 16 weeks, 30% of the scaffold was remodeled by osteoclast activity with new bone filling in the scaffolds and across the defects (Ricci et al., 2012). These studies suggested that AM scaffold with tissue engineering could be used in human craniofacial defect repair in the future.



**Figure 2** Chart of the different working steps done in this investigation. Chart of the different working steps done in this investigation. (A–C) Fabrication of the scaffolds. (D–F) cell cultivation. (G–I) implantation of cell-loaded scaffolds and healing. Histology of bone regeneration 3 days after implantation (arrows mark regions of mineralized matrix; original magnification X10) (J). Defect site 30 days post implantation (arrows mark regions of mineralized matrix; original magnification X10) (K). © Springer (Meyer, Neun-zehn & Wiesmann, 2012).

Full-size [DOI: 10.7717/peerj.7271/fig-2](https://doi.org/10.7717/peerj.7271/fig-2)

*Technique challenges for craniofacial bone printing and current strategies.* Although cell migration and proliferation inside the porous scaffold were observed in an AM HA scaffolds with inner-connective pores (Fierz et al., 2008), for all the porous scaffolds, it is still a big challenge to keep good cell viability in the central area. Insufficient nutrition and



oxygen in static culture lead to cell necrosis and make low cell density area. The method of dynamic cultivation can partly solve this problem. A dynamic cultivation system by perfusion containers strongly increased the MC3T3-E1 population compared to the static cultivation method in a 7-day *in vitro* cultivation. Close contact between cells and HA granules were observed deeply in the printed structure (Leukers et al., 2005). In another study, application of perfusion bioreactor system to a BCP binder jetting fabricated scaffold not only successfully reversed the decreased OB and BMSC cell numbers but also increased their differentiation potential (Rath et al., 2012).

Incomplete healing is another current limitation to AM bone grafts. Therefore, growth factors are applied in scaffolds. Bone morphology protein-2 (BMP2), a bone growth factor with strong bone induction property, is often used. The controlled release of BMP2 can be achieved by surface coating or nanoparticles embedding. More consideration is required according to the printing procedure for AM scaffolds. BMP2 loaded gelatin microparticles (GMPs) was used as a sustained release system and dispersed in hydrogel-based constructs, comparing with direct inclusion of BMP2 in alginate or control GMPs (Poldervaart et al., 2013). In another study with a multi-head deposition system (MHDS), rhBMP2 was loaded by either gelatin (for short-term delivery within a week) or collagen (for long-term delivery up to 28 days) and dispensed directly into the hollow microchannel structure of PCL/PLGA scaffold during the printing process (Shim et al., 2014). The *in vivo* micro-computed tomography (micro CT) and histological analyses indicated that CL/PLGA/collagen/rhBMP2 scaffolds lead to superior bone healing quality at both 4 and 8 weeks, without inflammatory response. Transforming growth factor- $\beta$  (TGF- $\beta$ ) was another important growth factor widely used in osteoblast differentiation and animal models (Nikolidakis et al., 2009).

Due to the hydrophobic feature of most printable materials, surface modification can be exploited to improve biocompatibility. Collagen is a widely used coating material for AM bone scaffold coating. The flexural strength and toughness of a calcium phosphate scaffold was significantly improved by coating a 0.5 wt% collagen film (Inzana et al., 2014). Biomimetic and  $\beta$ -TCP (Luangphakdy et al., 2013) can enhance the surface roughness and increase bone differentiation, thus may minimizing the need for expensive bone growth factors (Gibbs et al., 2014) (Table 1).

### **AM application in craniofacial cartilage**

*Polymer biomaterials for craniofacial cartilage TE.* Cartilage is one of the few tissues that are not vascularized, which makes its regeneration unique. The most widely applied techniques in cartilage printing included FDM, SLA and SLS. For cartilage repair, polymeric materials like PLA, PCL as well as PLGA were most common cartilage scaffolds. Another kind of major material was the hydrogel. Hydrogel could mimic the elastic module of cartilage and have been applied for cartilage reparation for a long time. Recent study showed PEG hydrogel had promising potential for cartilage bioprinting (Cui et al., 2012).

*Cells for craniofacial cartilage TE in AM approaches.* Chondrocytes were the standard seed cells in cartilages TE, but chondrocytes from different cartilage subtypes exhibited different

**Table 1** Comparison of various printed bone scaffolds in several in vitro and in vivo studies.

Authors	Materials	Strategies	Evidence	Model of study	Periods	Effects
<i>Leukers et al. (2005)</i>	HA	DP+ Sintered	In vitro	MC3T3-E1	7 days	The cells proliferated deep into the structure forming close contact HA granules.
<i>Williams et al. (2005)</i>	PCL	SLS	In vitro In vivo	BMP7 transduced HGF, Mice	4 weeks	SLS printed PCL scaffolds enhance bone tissue in-growth.
<i>Mapili et al. (2005)</i>	PEGDMA	SLA	In vitro	Acryl-PEG-RGD	24 h	Heparan sulfate allows efficient cell attachment and spatial localization of growth factors.
<i>Arcaute, Mann &amp; Wicker (2006)</i>	PEGDMA	SLA	In vitro	Human dermal fi- broblasts	24 h	Cell viability reaches at least 87% at 2 h and 24 h following fabrication.
<i>Li et al. (2007)</i>	epoxy resin (SL, 7560, Huntsman); CPC(scaffold)	SLA	In vitro	OB	7 days	Negative molds were generated by SLA. Cell density increased.
<i>Khalyfa et al. (2007)</i>	TCP/TTCP	3DP, Sintered, polymer infiltration	In vitro	MC3T3-E1	3 weeks	Objects with high compression strengths are obtained without sintering. Cell proliferation and osteogenic differentiation are achieved.
<i>Goodridge et al. (2007)</i>		SLS	In vivo	Rabbit tibiae	4 weeks	Bone was seen to have grown into the porous structure of the laser-sintered parts.
<i>Habibovic et al. (2008)</i>	Bioceramic	3DP	In vivo	12 adult Dutch milk goats	12 weeks	Bone formation within the channels of both monetite and brushite, indicate osteoinductivity of the materials.
<i>Lee et al. (2008)</i>	PPF/DEF	SLA	In vitro	Fibroblasts	1 week	Cells were adhering to and had proliferated at the top surface of the scaffold.
<i>Geffre et al. (2009)</i>	Polymer (NG)	FDM	In vivo	Femoral condyles (animal NG)	5 months	Biomimetic porous design largely enhances bone ingrowth.
<i>Lan et al. (2009)</i>	PPF/DEF	SLA	In vitro	MC3T3-E1	2 weeks	MC3T3 pre-osteoblast compatibility with PPF/DEF scaffolds is greatly enhanced with biomimetic apatite coating
<i>Fedorovich et al. (2009)</i>	photosensitive hydrogel (Lutrol)	Hydrogel extrusion, UV	In vitro	MSCs	3 weeks	MSCs embedded in photopolymerizable Lutrol-TP gels remain viable of 60% and keep potential of osteogenic differentiation.
<i>Zigang et al. (2009)</i>	PLGA/PVA	3DP	In vitro	Human Osteoblasts CRL-11372	3 weeks	Expression of ALP and osteonectin remain stable whilst collagen type I and osteopontin decrease.
<i>Ge et al. (2009)</i>	PLGA/PVA	3DP	In vivo	Rabbit: 1 intra- periosteum model. 2 bone defect of Ilium.	24 weeks	In both models, the implanted scaffolds facilitated new bone tissue formation and maturation.

(continued on next page)



Table 1 (continued)

Authors	Materials	Strategies	Evidence	Model of study	Periods	Effects
<i>Duan &amp; Wang (2010)</i>	Customized Ca-P/PHBV	SLS	In vitro	SaOS-2, C3H10T1/2 cells	3 weeks	Affinity of rhBMP2 on immobilized heparin facilitated the osteogenic differentiation of C3H10T1/2 cells during the whole period.
<i>Warnke et al. (2010)</i>	TCP, HAP	3DP+ Sintered	In vitro	Primary human osteoblasts.	1 week	Superior biocompatibility of HAP scaffolds to BioOss® is proved, while BioOss® is more compatible than TCP.
<i>Melchels, Feijen &amp; Grijpma (2010)</i>	poly(D,L-lactide) resin	SLA	In vitro	MC3T3	11 days	Pre-osteoblasts showed good adherence to these photo-crosslinked networks.
<i>Detsch et al. (2011)</i>	HA, TCP, HA/TCP	3DP	In vitro	RAW 264.7 cell line		21 days The results show that osteoclast-like cells were able to resorb calcium phosphate surfaces consisting of granules.
Torres et al. (2011)	b-TCP powder	3DP	In vivo	Rabbit calvaria vertical bone augmentation	8 weeks	Synthetic onlay blocks achieve vertical bone augmentations as high as 4.0 mm.
<i>Rath et al. (2012)</i>	biphasic calcium phosphate (BCP)	3DP + Sintered	In vitro	OB BMSC	3 weeks, 6 weeks	Application of a bioreactor system increases the proliferation and differentiation potential
<i>Blanquer, Sharifi &amp; Grijpma (2012)</i>	PDLLA 3-FAME/NVP	SLA	In vitro	MC3T3	NG	Mouse preosteoblasts readily attach and spread onto porous structures with the well-defined gyroid architectures by SLA.
<i>Korpela et al. (2013)</i>	PCL/bioactive glass(BAG), PLA	FDM	In vitro	Fibroblasts	2 weeks	FDM printed PLA has better cell friendly surface than PCL and PCL/BAG.
<i>Luangphakdy et al. (2013)</i>	PLGA TCP PPF HA TyrPC MCA	3DP VS SLA VS PL VS CM	In vivo	Canine Femoral Multi-Defect Model	4 weeks	TyrPCPL/TCP and PPF4SLA/HAPLGA Dip are better in biocompatibility than PLGA and PLCL scaffolds. MCA remains the best.
<i>Wang et al. (2013)</i>	biogenic polyphosphate (bio-polyP) and biogenic silica (bio-silica)	SFF/ indirect 3DP/ direct 3DP	In vitro	SaOS-2 cells, RAW 264.7 cells	10 days	Bio-silica and bio-polyP increase release of BMP2 while bio-polyP inhibits osteoclasts activity.
<i>Van Bael et al. (2013)</i>	PCL	SLS	In vitro	hPDCs	2 weeks	The double protein coating increased cell metabolic activity and cell differentiation
<i>Feng et al. (2014a)</i> <i>Feng et al. (2014b)</i>	β-TCP	SLS	In vitro	MG-63	5 days, 4 weeks	The mechanical and biological properties of the scaffolds were improved by doping of zinc oxide (ZnO).
<i>Feng et al. (2014a)</i> <i>Feng et al. (2014b)</i>	nano-HAP	SLS(NTSS)	In vitro	MG-63	5 days	Cells adhered and spread well on the scaffolds. A bone-like apatite layer formed.

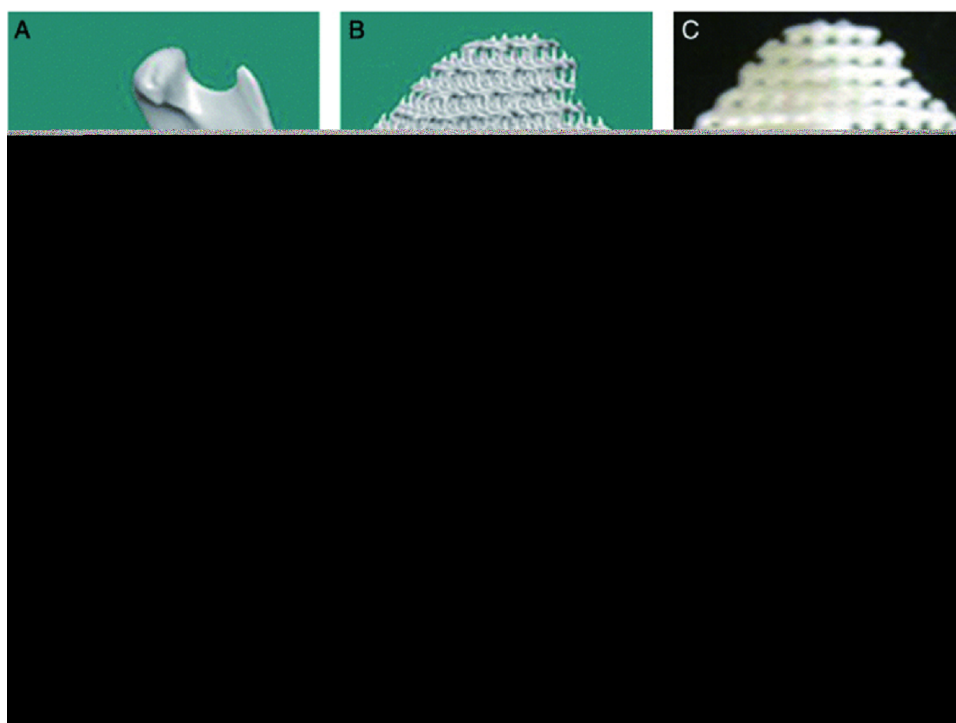
(continued on next page)

**Table 1** (continued)

Authors	Materials	Strategies	Evidence	Model of study	Periods	Effects
<i>Temple et al. (2014a)</i> <i>Temple et al. (2014b)</i>	PCL	FDM	In vitro	hASCs	18 days	ASCs seeded on the PCL scaffold are successfully induced in to both vascular and osteogenic differentiation.
<i>Shim et al. (2014)</i>	PCL/PLGA	FDM	In vitro in vivo	hTMSCs Rabbit radius defect	4 weeks 8 weeks	PCL/PLGA/collagen released rhBMP2 over one month in vitro, induced the osteogenic differentiation of hTMSCs in vitro and accelerated the new bone formation in the 20-mm rabbit radius defect.
<i>Inzana et al. (2014)</i>	Calcium phosphonate powder CPS	3DP	In vitro In vivo	C3H/10T1/2 cells, Murine critical size femoral defect.	9 weeks	3D printed CPS are enhanced through alternative binder solution formulations. Tween improve the flexural strength of CPS.Implants are osteoconductive.
<i>Pati et al. (2015)</i>	PCL/PLGA ECM	FDM	In vitro In vivo	hTMSCs, Rat calvarial defect.	8 weeks	The differentiation and mineralization may be augmented by combined effect of cell-laid extracellular matrix, exogenous osteogenic factors, and flow-induced shear stress

differentiation. In AM cartilage regeneration, to generate different cartilage subtypes, chondrocytes were harvested from several kinds of cartilages. In one research, rib cartilage cells were co-cultured with adherent stromal cells in a porous PCL scaffolds fabricated by FDM, making a culture system which may have potential of clinical usage ([Cao, Ho & Teoh, 2003](#)). In one research, porcine articular chondrocytes were seeded in PLGA scaffold fabricated with liquid-frozen deposition manufacturing, cultured for a total of 28 days. Final results showed that cells proliferated well and secreted abundant extracellular matrix ([Yen et al., 2009](#)). Not only chondrocytes, but also stem cells were also applied in cartilages TE, such as MSCs and so on ([Pati et al., 2015](#)). Interestingly, bone marrow clots (MC) as a promising resource proved to be a highly efficient, reliable, and simple cell resource that improved the biological performance of scaffolds as well. The FDM printed PCL-HA scaffold incubated with MC exhibited significant improvements in cell proliferation and chondrogenic differentiation. This study suggested that 3D printing scaffolds, MC could provide a promising candidate for cartilage regeneration ([Yao et al., 2015](#)). Stem cell-based approach and chondrocyte-based approach were common choices for cartilage regenerations. The major advantage of using stem cells is that autologous transplantation can be implemented ([Walter, Ossendorff & Schildberg, 2019](#)). Unlike chondrocytes, autologous stem cells, such as BMSCs or ADSCs, are rich in source. Xenografts of chondrocytes is not a good choice for human cartilage repair for there are immunological reactions ([Stone et al., 1997](#)). It is also reported that chondrocytes lost the chondrogenic differentiation after several passages ([Von der Mark et al., 1977](#); [Frohlich et al., 2007](#)). On the other hand, the stem cells may form fibrocartilage-like tissue in defect without grows factors ([Yoshioka et al., 2013](#)). Differences in depth of the defect also affect the cartilage regeneration, which should be selected according to research purposes ([Nixon et al., 2011](#)).

*AM application for TMJ cartilage.* The temporal mandibular joint (TMJ) disc is a heterogeneous fibrocartilaginous tissue which plays a vital role in its function. It was reported recently that researchers had developed TMJ disc scaffold with spatiotemporal delivery of connective tissue growth factor (CTGF) and transforming growth factor beta 3 (TGFβ3) which induced fibrochondrogenic differentiation of MSCs. They used layer-by-layer deposition printing technique with polycaprolactone (PCL) to fabricate the scaffold. CTGF and TGFβ3 were used as growth factors and human MSCs were used as seeding cells. After 6 weeks of cell culture, it resulted in a heterogeneous fibrocartilaginous matrix which was similar with the native TMJ disc in structure. Due to the possible effect of remaining PCL scaffold structure, the mechanical properties of the engineered TMJ discs by 6 weeks were approximated to the native properties ([Legemate et al., 2016](#)). [Schek et al. \(2005\)](#) used image-based design (IBD) and solid free-form (SFF) fabrication techniques to generate biphasic scaffolds. They found the growth of cartilaginous tissue and bone tissue after seeding different cells which demonstrated the possible therapy to regenerate TMJ joints ([Fig. 3](#)). In another study, researchers found that poly (glycerol sebacate) (PGS) might be potential scaffold material for TMJ disc engineering ([Hagandora et al., 2013](#)). Considering the complex geometries of TMJ cartilage, AM techniques have great



**Figure 3** Image-based design allowing creation of defect site-specific scaffolds. The revised legend: Image-based design allowing creation of defect site-specific scaffolds. The patient image (A) is used in conjunction with appropriate microstructure architecture to create the design for the implant (B). This design can then be produced using solid free-form fabrication, as in this prototype constructed from a single polymeric material (C). Scaffolds were demineralized prior to sectioning, resulting in empty areas (marked with \*) that were previously occupied by HA. Safranin O and fast green staining showed a large area of pink-stained cartilage (arrow) in the polymer sponge, in contact with the green-brown-stained bone that formed in the ceramic phase (E). Small pockets of cartilage were also observed within the pores of the ceramic phase of the scaffold (E, arrow). Hematoxylin and eosin staining of the ceramic phase showed the formation of bone (F, arrow) with marrow space within the pores of the HA. The assembled composite: the upper polymer phase (white) and the lower ceramic phase (blue) are transverses by the two PLA struts, one of which is visible on the front of the construct (G). © John Wiley & Sons (Schek et al., 2005).

Full-size DOI: [10.7717/peerj.7271/fig-3](https://doi.org/10.7717/peerj.7271/fig-3)

potential in its fabrication, and further exploration is needed in customized TMJ cartilage engineering.

*AM application for other craniofacial cartilages: ear, nose and throat.* Other than TMJ, in craniofacial area, cartilage also forms ear, nose, and larynx. Anatomically shaped ear, nose and throat were already printed through PR approaches. PCL-based ear and nose scaffold were printed and perfused with type I collagen containing chondrocytes. The samples were implanted into adult Yorkshire pigs for 8 weeks and histologically analyzed. Histological evidences present that they resulted in the growth and maintenance of cartilage-like tissue (Zopf et al., 2015). A bionic ear was printed with precise anatomic geometry of a human ear by alginate as matrix with 60 million chondrocytes per milliliter. An electrically conductive silver nanoparticle (AgNP) was also printed and infused inductive coil antenna as the

sensory part of the ear, connecting to cochlea-shaped electrodes supported on silicone. After *in vitro* culture, this printed bionic ear not only demonstrated good biocompatibility, but also exhibited enhanced auditory sensing for radio frequency reception, which mimicked the functional human ears ([Mannoor et al., 2013](#)). Functional tissue-engineering tracheal reconstruction has also been reported on rabbits by 3D printed PCL scaffolds. The shape and function of reconstructed trachea were restored successfully without any graft rejection. Histological results showed proper cartilage regeneration ([Chang et al., 2014](#)).

*Technique challenges for cartilage printing and current strategies.* A highlight in cartilage printing is that cells can be printed together with gels as cell vectors. For printing of cell-laden material, the important criterions lay on the suitable shear force and temperature. Otherwise, damage may occur to cells and reduce the viability in the printed constructs ([Derby, 2012](#); [Pati et al., 2015](#)). Some studies have been paying attention to modification of the printer nozzle and materials. In one study, an electrospun head was added on an inkjet printer and print electrospun PCL film with fibrin–collagen hydrogel-based cartilage layers inside. It was designed for printing a fibrin-collagen hydrogel of five layers in only 1 mm thickness. With this multi-layer scaffold, this research successfully enhanced the strength of printed materials and overcame the major limitation of inkjet printer in material's loading ability. Therefore, it is possible to be used to print some load bearing tissue such as cartilage ([Xu et al., 2013](#)) ([Table 2](#)).

### **AM applications in dental tissue**

TE strategies for tooth and periodontal tissue regeneration have been increasingly explored recently even though the implanting of titanium artificial tooth root is clinically more and more mature ([Ohazama et al., 2004](#); [Monteiro & Yelick, 2017](#)). By now, two tissue regeneration surgical procedures, guided bone regeneration (GBR) and guided tissue regeneration (GTR), have already been applied in dental clinics and proved to have a reliable effect on bone and gingival regeneration ([Bottino et al., 2012](#)). Few clinical methods can be applied in dental tissue regeneration; however, a lot of AM researches were done in this field. Multiple kinds of cells involve in the progress of dental tissue formation, including ameloblasts for enamel, odontoblasts for dentin, cementoblasts for cementum, and cells of multiple lineages including mesenchymal, fibroblastic, vascular, and neural cells that form dental pulp ([Fisher, Dean & Mikos, 2002](#); [Xue et al., 2013](#); [Park et al., 2014a](#); [Jensen et al., 2014](#)). Dental tissue includes composites of enamel, dentin and pulp, periodontal ligament, cementum, and so on. Since the dental tissue are related with each other, some researches chose to establish combined dental tissue like scaffolds with AM technology, such as cementum/dentin interface ([Lee et al., 2014](#)) or cementum/PDL interface ([Cho et al., 2016](#)). Various materials can be used in AM technology for dental tissue ([Table 3](#)). As a result, we divide the load of press into one (single) tissue regeneration and multi (combined) tissue regeneration and reviewed them one by one.

*Single dental tissue regeneration.* [Lee et al.](#)'s (2014) group has done tooth and periodontal regeneration by cell homing. The research starts from bioprinting of PCL-HA material into two kinds of anatomically tooth shaped scaffold by SLA technology, one is human

**Table 2** Comparison of various printed cartilage scaffolds in several in vitro and in vivo studies.

Authors	Materials	Strategies	Evidence	Model of study	Periods	Effects
<i>Cao, Ho &amp; Teoh (2003)</i>	PCL (NaOH treated)	FDM	In vitro	hOB(ilic crest) hChondrocytes (rib cartilage)	50 days	Osteogenic and chondrogenic cells can grow, proliferate, distribute, and produce extracellu-lar matrix in these PCL scaffolds.
<i>Smith et al. (2007)</i>	PCL	SLS	In vivo	Yucatan minipig mandibles	3 months	Cartilaginous tissue regeneration along the articulating surface with exuberant osseous tissue formation.
<i>Yen et al. (2009)</i>	PLGA (type II collagen)	FDM	In vitro	Chondrocytes (condyles of Yorkshire pigs)	4 weeks	Scaffolds swell slightly. The cartilaginous tissue formation was observed around but not yet in the interior of the constructs.
<i>Yen et al. (2009)</i>	PLGA (lyophilized for 48 h)	LFDM	In vitro	Chondrocytes (condyles of Yorkshire pigs)	4 weeks	Decrease swelling significantly. Mechanical strength is closer to native articular cartilage. Proliferate well and secrete abundant ECM.
<i>Soman et al. (2012)</i>	ZPR PEG	SLA	In vitro	hMSCs	1 week	Zero Poisson's ratio (ZPR) material PEG has been printed to generate 3D printed scaffolds. The hMSCs adhere and proliferate well.
<i>Grogan et al. (2013)</i>	GelMA	SLA	In vitro Ex vivo	human avascular zone meniscus cells; Human meniscus ex vivo repair model	6 weeks	Micropatterned GelMA scaffolds are non-toxic, produce organized cellular alignment, and promote meniscus-like tissue formation.
<i>Mannoor et al. (2013)</i>	Alginate, silicon, (AgNP infused)	syringe extrusion	In vitro	Chondrocytes (articular cartilage of calves)	10 weeks	The ears are cultured in vitro for 10 weeks. Audio signals are received by the bionic ears.
<i>Lee et al. (2013)</i>	PCL, hyaluronic acid, gelatin	SLS	In vitro	Chondrocytes (New Zealand white rabbit)	4 weeks	This study successfully forms a soft/hard bi-phase scaffold, which offers a better environment for producing more proteins.
<i>Xu et al. (2013)</i>	PCL, FN, Collagen	Inkjet, Electrospun	In vitro In vivo	Rabbit elastic chondrocytes; Immunodeficient mice subcutaneous model	8 weeks	The hybrid electrospinning/inkjet printing technique simplifies production of complex tissues.
<i>Schuller-Ravoo et al. (2013)</i>	PTMC	SLA	In vitro	Bovine chondrocytes	6 weeks	The compression moduli of the constructed cartilage increases 50% to approximately 100 kPa.

(continued on next page)



**Table 2** (continued)

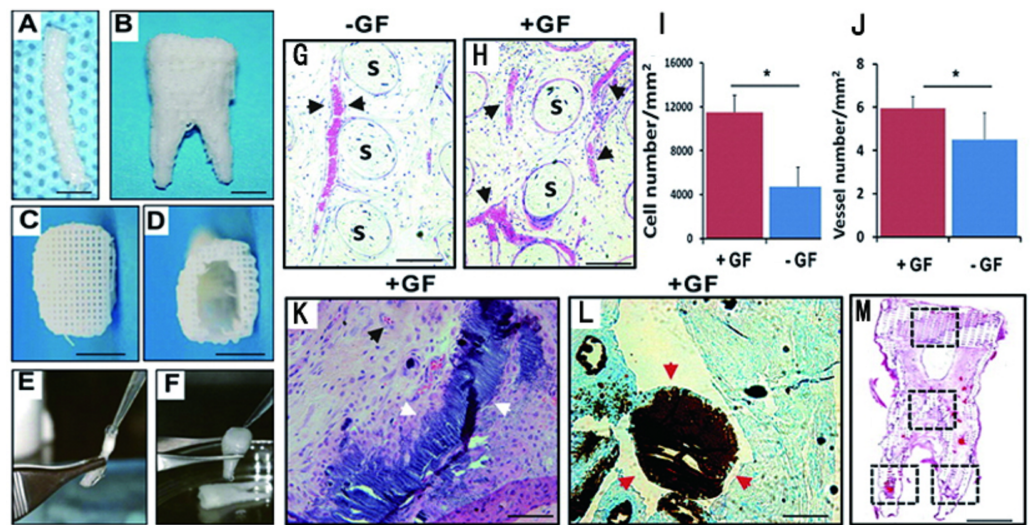
Authors	Materials	Strategies	Evidence	Model of study	Periods	Effects
<a href="#">Gao et al. (2014)</a>	PEG	Inkjet, UV	In vitro	human chondrocytes	4 weeks	Printed neocartilage demonstrated excellent glycosaminoglycan (GAG) and collagen II production with consistent gene expression.
<a href="#">Pati et al. (2015)</a>	dECM, PCL	Extrusion, FDM	In vitro	hASCs hTMSCs	2 weeks	Tissue-specific dECM bioinks achieve high cell viability and functionality.
<a href="#">Chen et al. (2014)</a>	PCL (coating with collagen)	SLS	In vivo	Subdermally dorsal model of female nude mice	8 week	Collagen as a surface modification material is superior to gelatin in supporting cells growth and stimulating ECM protein secretion.
<a href="#">Chang et al. (2014)</a>	PCL	FDM	In vivo	Rabbit half-pipe-shaped tracheal defect. Rabbit MSCs	8 weeks	The 3DP scaffold with fibrin/MSCs served as a resorbable, chondro-productive, and proper cartilage regeneration strategy.
<a href="#">Zhang et al. (2014)</a>	PEG/ $\beta$ -TCP	SLA & hydrogel	In vivo	Rabbit trochlea critical size osteochondral defects.	52 weeks	The repaired subchondral bone formed from 16 to 52 weeks in a “flow like” manner from surrounding bone to the defect center gradually.
<a href="#">Yao et al. (2015)</a>	PCL/HA	FDM	in vitro in vivo	Bone marrow clots and BMSC from 30 female New Zealand white rabbits (5-6 months old). 60 Female nude mice (6-7 weeks old).	4 weeks	Combination with MC is a highly efficient, reliable, and simple method that improves the biological performance of 3D PCL/HA scaffold.
<a href="#">Zopf et al. (2015)</a>	PCL	SLA	In vitro In vivo	Yorkshire pigs Supraperichondrial soft tissue flaps	2 months	The histological evidence present that anatomically PCL based ear and nose resulted in the growth and maintenance of cartilage-like tissue.

**Table 3** Comparison of various printed dental scaffolds in several in vitro and in vivo studies.

Authors	Materials	Strategies	Evidence	Model of study	Periods	Effects
<a href="#">Kim et al. (2010)</a>	PCL/HA (Infused SDF1- and BMP7-loaded collagen)	FDM	In vivo	22 male (12-week-old) Sprague-Dawley rats: 1 Rat's dorsum subcutaneous pouches for human mandibular molar scaffolds, 2 right mandibular central incisor for rat central incisor teeth	9 weeks	A putative periodontal ligament and new bone regenerate at the interface of rat incisor scaffold with native alveolar bone by cell homing.
<a href="#">Lee et al. (2014)</a>	PCL/HA 100 um, 300 um, 600 um.	FDM	In vitro In vivo	1 DPSCs, 2 PDLSCs, 3 ABSCs. The dorsum's mid-sagittal plane for 10-week-old immunodeficient mice (Harlan)	4 weeks	DPSC-seeded multiphase scaffolds yield aligned PDL-like collagen fibers. The fibers inserted into bone sialoprotein-positive bone-like tissue and putative cementum matrix protein 1-positive/dentin sialophosphoprotein-positive dentin/cementum tissues.
<a href="#">Xue et al. (2013)</a>	Alginate/ gelatin	Hydrogel extrusion	In vitro	hDPCs		Self-defined shaped 3D constructs are printed and achieve the cell viability of 87%.
<a href="#">Jensen et al. (2014)</a>	PCL	FDM	In vitro	hDPCs	S3 weeks	The HT-PCL scaffold promotes cell migration and osteogenic differentiation.
<a href="#">Rasperini et al. (2015)</a>	PCL	SLS	In vivo	Clinical case on a periodontitis patient's canine.	13 months	The case demonstrated a 3-mm gain of clinical attachment and partial root coverage. However, the scaffold became exposed at the 13th month.
<a href="#">Cho et al. (2016)</a>	PCL, collagen I gel	FDM	Ex vivo	PDLSCs seeded PCL was placed on tooth root surface defect.	6 weeks	The new mineralized tissue layer seen in BMP-7 treated samples expressed cementum protein 1 (CEMP1)
<a href="#">Jung, Lee &amp; Cho (2016)</a>	PEG, PCL, cell-laden Alginate	Hydrogel extrusion and FDM	In vitro			Multiple-layer bioprinting teeth was fabricated with a frame, two kinds of cell-laden hydrogel and a support.

molar scaffold, and another is rat incisor scaffold. Growth factors of bone morphogenetic protein-7 (BMP7) and stromal cell-derived factor-1 (SDF1) were added into the scaffold to active cell homing *in vivo*. These two scaffolds were orthotopically and ectopically implanted into mandibular incisor extraction socket and dorsum subcutaneous pouches of rats. After 9 weeks, tooth-like structures and periodontal integration were successfully generated by their study with endogenous cell homing and angiogenesis ([Kim et al., 2010](#)). High survival rates were reported in a self-defined shape engineered pulp, which was as high as  $87\% \pm 2\%$ . This research was done to establish a dental pulp like tissue with human dental pulp cells (hDPCs) in sodium alginate/gelatin hydrosol (8:2), and an amount of  $1 \times 10^6$  cells/ml were seeded ([Xue et al., 2013](#)). In a recent study to generate artificial periodontal ligament (PDL) tissue, human PDL cells were seeded on anatomically FDM printing PCL/HA scaffolds. In periodontal osseous fenestration defects on nude mice, guided fiber alignment was later observed oblique orientation to the root surface 6 weeks post implant, which mimics the mature PDL fiber alignment ([Park et al., 2014b](#)). Another study investigated the osteogenic potential of human dental pulp stem cells (hDPSCs) on different porous PCL printing scaffolds. This research used a specially designed double-layer scaffold system for better osteogenic differentiation. The first layer was nanostructured porous PCL (NSP-PCL) scaffold, and the second layer was PCL coating with a mixture of hyaluronic acid and beta-TCP (HT-PCL) scaffold. With 21 days of *in vitro* cultivation, the NSP-PCL and HT-PCL scaffolds promoted osteogenic differentiation and  $\text{Ca}^{2+}$  deposition, showing promising application periodontal tissue regeneration ([Jensen et al., 2014](#)). A very recent clinic case first showed the SLS printed PCL scaffolds' application on a periodontal tissue regeneration in a periodontitis patient. The case demonstrated a 3 mm gain of clinical attachment and partial root coverage. However, the scaffold became exposed at the 13th month and been removed. However, it showed huge potential of AM applications for dental tissues ([Rasperini et al., 2015](#)) ([Fig. 4](#)).

**Combined dental tissue regeneration.** [Lee et al. \(2014\)](#) established a multiphase scaffold mimicking cementum/dentin interface, PDL and alveolar bone by 3D printing blended polycaprolactone/hydroxyapatite (90:10) materials. By adding adequate growth factor and culturing cells, they established PDL-like tissue, the fiber of which connects from one side dentin/cementum tissue to another side bone-like tissue, which is just similar to living PDL's anatomical property ([Lee et al., 2014](#)). Another recent 3D bioprinting research showed BMP7 was beneficial for cementum formation. This research established an interface between cementum and human PDL like tissue, which is novel in combining natural tissue with artificial AM tissue *in vitro*. The AM scaffold was fabricated with PLGA, and then seeded human PDLSCs. After 6 weeks of culturing, they found that cementum-like layer can be successfully formed in this interface between cementum and human PDL like tissue. They also found that BMP7 helped in cementum matrix protein 1 secretion *in vitro*, which may be good for cementum tissue establishment ([Cho et al., 2016](#)).



**Figure 4** Design and fabrication of anatomically shaped human and rat tooth scaffolds by 3D bioprinting. Design and fabrication of anatomically shaped human and rat tooth scaffolds by 3D bioprinting. Anatomic shape of the rat mandibular central incisor (A) and human mandibular first molar (B) were used for 3D reconstruction and bioprinting of a hybrid scaffold of poly- $\epsilon$ -caprolactone and hydroxyapatite, with 200- $\mu$ m microstrands and interconnecting microchannels (diam., 200  $\mu$ m), which serve as conduits for cell homing and angiogenesis (C, D). A blended cocktail of stromal-derived factor-1 (100 ng/mL) and bone morphogenetic protein-7 (100 ng/mL) was delivered in 2 mg/mL neutralized type I collagen solution and infused in scaffold microchannels for rat incisor scaffold (E) and human molar scaffold (F), followed by gelation. (G) In human mandibular molar scaffolds, cells populated scaffold microchannels without growth factor delivery. (H) Combined SDF1 and BMP7 delivery induced substantial cell homing into microchannels. (I) Combined SDF1 and BMP7 delivery homed significantly more cells into the microchannels than without growth factor delivery ( $p < 0.01$ ;  $N = 11$ ). (J) Combined SDF1 and BMP7 delivery elaborated significantly more blood vessels than without growth factor delivery ( $p < 0.05$ ;  $N = 11$ ). (K, L) Mineral tissue in isolated areas in microchannels adjacent to blood vessels and abundant cells, and confirmed by von Kossa staining. (M) Tissue sections from coronal, middle, and two root portions of human molar scaffolds were quantified for cell density and angiogenesis. s, scaffold; GF, growth factor(s). Scale: 100  $\mu$ m. © SAGE Publications Kim et al. (2010).

Full-size [DOI: 10.7717/peerj.7271/fig-4](https://doi.org/10.7717/peerj.7271/fig-4)

## CONCLUSIONS

The transition of new techniques from a novel experimental phase to be regularly available to any laboratory has frequently driven step-changes in the progress of science (Hung, Tseng & Hsu, 2014b). Considering the rapid development of commercial printers and open-resource software, the AM technique has great potential to facilitate the next generation TE. Despite some limitations on current AM scaffolds, there have been recent exciting advances in AM technique microstructure control, porosity, porous interconnectivity, and surface modification, bioactivity *in vitro* and *in vivo*. Its development may lead to a promising future to functional tissue and organ regeneration. The following fields are recommended for further AM studies in craniofacial and dental TE:

The long-term healing effects on animal models.

Pre-clinic studies and clinical application on patients, including the whole procedure from the collection of defect image data of patients to the long-term morphological and functional evaluation of the AM conducted patient-specific scaffolds.

All-in-one manufacturer protocol for printing complex tissue structures with customized materials, porosity, surfaces and pattern designs.

Tissue and (or) organ printing with live cells.

## ADDITIONAL INFORMATION AND DECLARATIONS

### Funding

This work was supported by the National Natural Science Foundation of China (No. 81700941 and No. 31600752) and the Sichuan University-Luzhou City cooperation project (No. 2018CDLZ-14) The funders had no role in study design, data collection and analysis, decision to publish, or preparation of the manuscript.

### Grant Disclosures

The following grant information was disclosed by the authors:

National Natural Science Foundation of China: 81700941, 31600752.

Sichuan University-Luzhou City cooperation project: 2018CDLZ-14.

### Competing Interests

The authors declare there are no competing interests.

### Author Contributions

- Wen Liao conceived and designed the experiments, prepared figures and/or tables.
- Lin Xu performed the experiments, approved the final draft.
- Kaijuan Wangrao performed the experiments.
- Yu Du and Qiuchan Xiong analyzed the data.
- Yang Yao contributed reagents/materials/analysis tools, authored or reviewed drafts of the paper.

### Data Availability

The following information was supplied regarding data availability:

The research in this article did not generate any data or code; this is a literature review.

## REFERENCES

- Alfotawei R, Naudi KB, Lappin D, Barbenel J, Di Silvio L, Hunter K, McMahon J, Ayoub A. 2014.** The use of TriCalcium Phosphate (TCP) and stem cells for the regeneration of osteoperiosteal critical-size mandibular bony defects, an in vitro and preclinical study. *Journal of Cranio-Maxillo-Facial Surgery* **42**:863–869 DOI [10.1016/j.jcms.2013.12.006](https://doi.org/10.1016/j.jcms.2013.12.006).
- Arcaute K, Mann BK, Wicker RB. 2006.** Stereolithography of three-dimensional bioactive poly(ethylene glycol) constructs with encapsulated cells. *Annals of Biomedical Engineering* **34**:1429–1441 DOI [10.1007/s10439-006-9156-y](https://doi.org/10.1007/s10439-006-9156-y).

- Barnes CP, Sell SA, Boland ED, Simpson DG, Bowlin GL. 2007.** Nanofiber technology: designing the next generation of tissue engineering scaffolds. *Advanced Drug Delivery Reviews* **59**:1413–1433 DOI [10.1016/j.addr.2007.04.022](https://doi.org/10.1016/j.addr.2007.04.022).
- Beaman JJ, Deckard CR. 1990.** Selective laser sintering with assisted powder handling. Available at <https://patents.justia.com/patent/4938816> (accessed on 22 June 2019).
- Blanquer SB, Sharifi S, Grijpma DW. 2012.** Development of poly(trimethylene carbonate) network implants for annulus fibrosus tissue engineering. *Journal of Applied Biomaterials & Functional Materials* **10**:177–184 DOI [10.5301/JABFM.2012.10354](https://doi.org/10.5301/JABFM.2012.10354).
- Bottino MC, Thomas V, Schmidt G, Vohra YK, Chu TM, Kowolik MJ, Janowski GM. 2012.** Recent advances in the development of GTR/GBR membranes for periodontal regeneration—a materials perspective. *Dental Materials* **28**:703–721 DOI [10.1016/j.dental.2012.04.022](https://doi.org/10.1016/j.dental.2012.04.022).
- Cai H, Azangwe G, Shepherd DE. 2005.** Skin cell culture on an ear-shaped scaffold created by fused deposition modelling. *Biomedical Materials and Engineering* **15**:375–380.
- Cao T, Ho KH, Teoh SH. 2003.** Scaffold design and in vitro study of osteochondral coculture in a three-dimensional porous polycaprolactone scaffold fabricated by fused deposition modeling. *Tissue Engineering* **9**(Suppl 1):S103–S112 DOI [10.1089/10763270360697012](https://doi.org/10.1089/10763270360697012).
- Chan WD, Perinpanayagam H, Goldberg HA, Hunter GK, Dixon SJ, Santos GJ, Rizkalla AS. 2009.** Tissue engineering scaffolds for the regeneration of craniofacial bone. *Journal of the Canadian Dental Association* **75**:373–377.
- Chang JW, Park SA, Park JK, Choi JW, Kim YS, Shin YS, Kim CH. 2014.** Tissue-engineered tracheal reconstruction using three-dimensionally printed artificial tracheal graft: preliminary report. *Artificial Organs* **38**:E95–E105 DOI [10.1111/aor.12310](https://doi.org/10.1111/aor.12310).
- Chen CH, Lee MY, Shyu VB, Chen YC, Chen CT, Chen JP. 2014.** Surface modification of polycaprolactone scaffolds fabricated via selective laser sintering for cartilage tissue engineering. *Materials Science and Engineering C: Materials for Biological Applications* **40**:389–397 DOI [10.1016/j.msec.2014.04.029](https://doi.org/10.1016/j.msec.2014.04.029).
- Cho H, Tarafder S, Fogge M, Kao K, Lee CH. 2016.** Periodontal ligament stem/progenitor cells with protein-releasing scaffolds for cementum formation and integration on dentin surface. *Connective Tissue Research* **57**:488–495 DOI [10.1080/03008207.2016.1191478](https://doi.org/10.1080/03008207.2016.1191478).
- Chua CK, Leong KF, Tan KH, Wiria FE, Cheah CM. 2004.** Development of tissue scaffolds using selective laser sintering of polyvinyl alcohol/hydroxyapatite biocomposite for craniofacial and joint defects. *Journal of Materials Science: Materials in Medicine* **15**:1113–1121 DOI [10.1023/B:JMSM.0000046393.81449.a5](https://doi.org/10.1023/B:JMSM.0000046393.81449.a5).
- Chung S, Ingle NP, Montero GA, Kim SH, King MW. 2010.** Bioresorbable elastomeric vascular tissue engineering scaffolds via melt spinning and electrospinning. *Acta Biomaterialia* **6**:1958–1967 DOI [10.1016/j.actbio.2009.12.007](https://doi.org/10.1016/j.actbio.2009.12.007).



- Cui X, Breitenkamp K, Finn MG, Lotz M, D’Lima DD. 2012. Direct human cartilage repair using three-dimensional bioprinting technology. *Tissue Engineering Part A* 18:1304–1312 DOI 10.1089/ten.TEA.2011.0543.
- Deckard CR. 1991. Method and apparatus for producing parts by selective sintering. Available at [https://www.lens.org/lens/patent/US\\_4863538](https://www.lens.org/lens/patent/US_4863538) (accessed on 22 June 2019).
- Deckard CR, Beaman JJ, Darrah JF. 1992. Method for selective laser sintering with layerwise cross-scanning. Available at <https://patents.justia.com/patent/5155324> (accessed on 22 June 2019).
- Derby B. 2012. Printing and prototyping of tissues and scaffolds. *Science* 338:921–926 DOI 10.1126/science.1226340.
- Detsch R, Schaefer S, Deisinger U, Ziegler G, Seitz H, Leukers B. 2011. In vitro: osteoclastic activity studies on surfaces of 3D printed calcium phosphate scaffolds. *Journal of Biomaterials Applications* 26:359–380 DOI 10.1177/0885328210373285.
- Duan B, Wang M. 2010. Customized Ca-P/PHBV nanocomposite scaffolds for bone tissue engineering: design, fabrication, surface modification and sustained release of growth factor. *Journal of the Royal Society Interface* 7(Suppl 5):S615–S629 DOI 10.1098/rsif.2010.0127.focus.
- Duan B, Wang M. 2011. Selective laser sintering and its application in biomedical engineering. *MRS Bulletin* 36:998–1005 DOI 10.1557/mrs.2011.270.
- Fang D, Roskies M, Abdallah MN, Bakkar M, Jordan J, Lin LC, Tamimi F, Tran SD. 2017. Three-dimensional printed scaffolds with multipotent mesenchymal stromal cells for rabbit mandibular reconstruction and engineering. *Methods in Molecular Biology* 1553:273–291 DOI 10.1007/978-1-4939-6756-8\_22.
- Fedorovich NE, Swennen I, Girones J, Moroni L, Van Blitterswijk CA, Schacht E, Alblas J, Dhert WJ. 2009. Evaluation of photocrosslinked Lutrol hydrogel for tissue printing applications. *Biomacromolecules* 10:1689–1696 DOI 10.1021/bm801463q.
- Feng P, Niu M, Gao C, Peng S, Shuai C. 2014a. A novel two-step sintering for nano-hydroxyapatite scaffolds for bone tissue engineering. *Scientific Reports* 4:5599 DOI 10.1038/srep05599.
- Feng P, Wei P, Shuai C, Peng S. 2014b. Characterization of mechanical and biological properties of 3-D scaffolds reinforced with zinc oxide for bone tissue engineering. *PLOS ONE* 9:e87755 DOI 10.1371/journal.pone.0087755.
- Fierz FC, Beckmann F, Huser M, Irsen SH, Leukers B, Witte F, Degistirici O, Andronache A, Thie M, Muller B. 2008. The morphology of anisotropic 3D-printed hydroxyapatite scaffolds. *Biomaterials* 29:3799–3806 DOI 10.1016/j.biomaterials.2008.06.012.
- Fischer P, Karapatis N, Romano V, Glardon R, Weber HP. 2002. A model for the interaction of near-infrared laser pulses with metal powders in selective laser sintering. *Applied Physics A: Materials Science & Processing* 74:467–474 DOI 10.1007/s003390101139.

- Fisher JP, Dean D, Mikos AG. 2002. Photocrosslinking characteristics and mechanical properties of diethyl fumarate/poly(propylene fumarate) biomaterials. *Biomaterials* 23:4333–4343 DOI 10.1016/S0142-9612(02)00178-3.
- Frohlich M, Malicev E, Gorenssek M, Knezevic M, Kregar VN. 2007. Evaluation of rabbit auricular chondrocyte isolation and growth parameters in cell culture. *Cell Biology International* 31:620–625 DOI 10.1016/j.cellbi.2006.12.003.
- Gao G, Schilling AF, Yonezawa T, Wang J, Dai G, Cui X. 2014. Bioactive nanoparticles stimulate bone tissue formation in bioprinted three-dimensional scaffold and human mesenchymal stem cells. *Biotechnology Journal* 9:1304–1311 DOI 10.1002/biot.201400305.
- Ge Z, Tian X, Heng BC, Fan V, Yeo JF, Cao T. 2009. Histological evaluation of osteogenesis of 3D-printed poly-lactic-co-glycolic acid (PLGA) scaffolds in a rabbit model. *Biomedical Materials* 4:21001 DOI 10.1088/1748-6041/4/2/021001.
- Geffre CP, Margolis DS, Ruth JT, DeYoung DW, Tellis BC, Szivek JA. 2009. A novel biomimetic polymer scaffold design enhances bone ingrowth. *Journal of Biomedical Materials Research Part A* 91:795–805 DOI 10.1002/jbm.a.32251.
- Gibbs DM, Vaezi M, Yang S, Oreffo RO. 2014. Hope versus hype: what can additive manufacturing realistically offer trauma and orthopedic surgery? *Regenerative Medicine* 9:535–549 DOI 10.2217/rme.14.20.
- Giordano RA, Wu BM, Borland SW, Cima LG, Sachs EM, Cima MJ. 1996. Mechanical properties of dense polylactic acid structures fabricated by three dimensional printing. *Journal of Biomaterials Science, Polymer Edition* 8:63–75.
- Gokuldoss PK, Kolla S, Eckert J. 2017. Additive manufacturing processes: selective laser melting, electron beam melting and binder jetting-selection guidelines. *Materials (Basel)* 10(6):672–684 DOI 10.3390/ma10060672.
- Grogan SP, Chung PH, Soman P, Chen P, Lotz MK, Chen S, D’Lima DD. 2013. Digital micromirror device projection printing system for meniscus tissue engineering. *Acta Biomaterialia* 9:7218–7226 DOI 10.1016/j.actbio.2013.03.020.
- Goodridge RD, Wood DJ, Ohtsuki C, Dalgarno KW. 2007. Biological evaluation of an apatite-mullite glass-ceramic produced via selective laser sintering. *Acta Biomaterialia* 3:221–231 DOI 10.1016/j.actbio.2006.10.005.
- Habibovic P, Gbureck U, Doillon CJ, Bassett DC, Van Blitterswijk CA, Barralet JE. 2008. Osteoconduction and osteoinduction of low-temperature 3D printed bio-ceramic implants. *Biomaterials* 29:944–953 DOI 10.1016/j.biomaterials.2007.10.023.
- Hagandora CK, Gao J, Wang Y, Almarza AJ. 2013. Poly (glycerol sebacate): a novel scaffold material for temporomandibular joint disc engineering. *Tissue Engineering Part A* 19:729–737 DOI 10.1089/ten.tea.2012.0304.
- He HY, Zhang JY, Mi X, Hu Y, Gu XY. 2015. Rapid prototyping for tissue-engineered bone scaffold by 3D printing and biocompatibility study. *International Journal of Clinical and Experimental Medicine* 8:11777–11785.
- Hull CW. 1986. Apparatus for production of three-dimensional objects by stereolithography. Available at <https://www.lens.org/lens/patent/022-138-245-291-118> (accessed on 22 June 2019).

- Hung KC, Tseng CS, Hsu SH. 2014a.** Synthesis and 3D printing of biodegradable polyurethane elastomer by a water-based process for cartilage tissue engineering applications. *Advanced Healthcare Materials* 3:1578–1587 DOI 10.1002/adhm.201400018.
- Hung KC, Tseng CS, Hsu SH. 2014b.** Synthesis and 3D printing of biodegradable polyurethane elastomer by a water-based process for cartilage tissue engineering applications. *Advanced Healthcare Materials* 3:1578–1587 DOI 10.1002/adhm.201400018.
- Inzana JA, Olvera D, Fuller SM, Kelly JP, Graeve OA, Schwarz EM, Kates SL, Awad HA. 2014.** 3D printing of composite calcium phosphate and collagen scaffolds for bone regeneration. *Biomaterials* 35:4026–4034 DOI 10.1016/j.biomaterials.2014.01.064.
- Jayasinghe SN. 2011.** Bio-electrosprays: from bio-analytics to a generic tool for the health sciences. *The Analyst* 136:878–890 DOI 10.1039/c0an00830c.
- Jayasinghe SN. 2013.** Cell electrospinning: a novel tool for functionalising fibres, scaffolds and membranes with living cells and other advanced materials for regenerative biology and medicine. *The Analyst* 138:2215 DOI 10.1039/c3an36599a.
- Jayasinghe SN, Qureshi AN, Eagles PAM. 2006.** Electrohydrodynamic jet processing: an advanced electric-field-driven jetting phenomenon for processing living cells. *Small* 2:216–219 DOI 10.1002/smll.200500291.
- Jensen J, Roling JH, Le DQ, Kristiansen AA, Nygaard JV, Hokland LB, Bendtsen M, Kassem M, Lysdahl H, Bunger CE. 2014.** Surface-modified functionalized polycaprolactone scaffolds for bone repair: *in vitro* and *in vivo* experiments. *Journal of Biomedical Materials Research Part A* 102:2993–3003 DOI 10.1002/jbm.a.34970.
- Jung JW, Lee JS, Cho DW. 2016.** Computer-aided multiple-head 3D printing system for printing of heterogeneous organ/tissue constructs. *Scientific Reports* 6:21685 DOI 10.1038/srep21685.
- Kang HW, Lee SJ, Ko IK, Kengla C, Yoo JJ, Atala A. 2016.** A 3D bioprinting system to produce human-scale tissue constructs with structural integrity. *Nature Biotechnology* 34:312–319 DOI 10.1038/nbt.3413.
- Khalyfa A, Vogt S, Weisser J, Grimm G, Rechtenbach A, Meyer W, Schnabelrauch M. 2007.** Development of a new calcium phosphate powder-binder system for the 3D printing of patient specific implants. *Journal of Materials Science: Materials in Medicine* 18:909–916 DOI 10.1007/s10856-006-0073-2.
- Kim K, Lee CH, Kim BK, Mao JJ. 2010.** Anatomically shaped tooth and periodontal regeneration by cell homing. *Journal of Dental Research* 89:842–847 DOI 10.1177/0022034510370803.
- Korpela J, Kokkari A, Korhonen H, Malin M, Narhi T, Seppala J. 2013.** Biodegradable and bioactive porous scaffold structures prepared using fused deposition modeling. *Journal of Biomedical Materials Research Part B Applied Biomaterials* 101:610–619 DOI 10.1002/jbm.b.32863.
- Lan PX, Lee JW, Seol YJ, Cho DW. 2009.** Development of 3D PPF/DEF scaffolds using micro-stereolithography and surface modification. *Journal of Materials Science: Materials in Medicine* 20(1):271–279 DOI 10.1007/s10856-008-3567-2.

- Lee CH, Hajibandeh J, Suzuki T, Fan A, Shang P, Mao JJ. 2014. Three-dimensional printed multiphase scaffolds for regeneration of periodontium complex. *Tissue Engineering Part A* **20**:1342–1351 DOI [10.1089/ten.TEA.2013.0386](https://doi.org/10.1089/ten.TEA.2013.0386).
- Lee JW, Lan PX, Kim B, Lim G, Cho DW. 2008. Fabrication and characteristic analysis of a poly(propylene fumarate) scaffold using micro-stereolithography technology. *Journal of Biomedical Materials Research Part B Applied Biomaterials* **87**:1–9 DOI [10.1002/jbm.b.31057](https://doi.org/10.1002/jbm.b.31057).
- Lee MY, Tsai WW, Chen HJ, Chen JP, Chen CH, Yeh WL, An J. 2013. Laser sintered porous polycaprolactone scaffolds loaded with hyaluronic acid and gelatin-grafted thermoresponsive hydrogel for cartilage tissue engineering. *Bio-Medical Materials and Engineering* **23**:533–543 DOI [10.3233/BME-130767](https://doi.org/10.3233/BME-130767).
- Legemate K, Tarafder S, Jun Y, Lee CH. 2016. Engineering human TMJ discs with protein-releasing 3D-printed scaffolds. *Journal of Dental Research* **95**:800–807 DOI [10.1177/0022034516642404](https://doi.org/10.1177/0022034516642404).
- Leukers B, Gulkan H, Irsen SH, Milz S, Tille C, Schieker M, Seitz H. 2005. Hydroxyapatite scaffolds for bone tissue engineering made by 3D printing. *Journal of Materials Science: Materials in Medicine* **16**(12):1121–1124 DOI [10.1007/s10856-005-4716-5](https://doi.org/10.1007/s10856-005-4716-5).
- Li X, Li D, Lu B, Wang L, Wang Z. 2007. Fabrication and evaluation of calcium phosphate cement scaffold with controlled internal channel architecture and complex shape. *Proceedings of the Institution of Mechanical Engineers, Part H* **221**:951–958 DOI [10.1243/09544119JEIM302](https://doi.org/10.1243/09544119JEIM302).
- Lohfeld S, Cahill S, Barron V, McHugh P, Durselen L, Kreja L, Bausewein C, Ignatius A. 2012. Fabrication, mechanical and in vivo performance of polycaprolactone/tricalcium phosphate composite scaffolds. *Acta Biomaterialia* **8**:3446–3456 DOI [10.1016/j.actbio.2012.05.018](https://doi.org/10.1016/j.actbio.2012.05.018).
- Lu Y, Huang J, Yu G, Cardenas R, Wei S, Wujcik EK, Guo Z. 2016. Coaxial electrospun fibers: applications in drug delivery and tissue engineering. *Wiley Interdiscip Rev Nanomed Nanobiotechnol* **8**:654–677 DOI [10.1002/wnan.1391](https://doi.org/10.1002/wnan.1391).
- Luangphakdy V, Walker E, Shinohara K, Pan H, Hefferan T, Bauer TW, Stockdale L, Saini S, Dadsetan M, Runge MB, Vasanji A, Griffith L, Yaszemski M, Muschler GF. 2013. Evaluation of osteoconductive scaffolds in the canine femoral multi-defect model. *Tissue engineering Part A* **19**:634–648 DOI [10.1089/ten.TEA.2012.0289](https://doi.org/10.1089/ten.TEA.2012.0289).
- Mannoor MS, Jiang Z, James T, Kong YL, Malatesta KA, Soboyejo WO, Verma N, Gracias DH, McAlpine MC. 2013. 3D printed bionic ears. *Nano Letters* **13**:2634–2639 DOI [10.1021/nl4007744](https://doi.org/10.1021/nl4007744).
- Mapili G, Lu Y, Chen S, Roy K. 2005. Laser-layered microfabrication of spatially patterned functionalized tissue-engineering scaffolds. *Journal of Biomedical Materials Research Part B Applied Biomaterials* **75**:414–424 DOI [10.1002/jbm.b.30325](https://doi.org/10.1002/jbm.b.30325).
- Mazzoli A. 2013. Selective laser sintering in biomedical engineering. *Medical & Biological Engineering & Computing* **51**:245–256 DOI [10.1007/s11517-012-1001-x](https://doi.org/10.1007/s11517-012-1001-x).

- Mazzoli A, Germani M, Moriconi G. 2007.** Application of optical digitizing techniques to evaluate the shape accuracy of anatomical models derived from computed tomography data. *Journal of Oral and Maxillofacial Surgery* **65**:1410–1418 DOI [10.1016/j.joms.2005.11.083](https://doi.org/10.1016/j.joms.2005.11.083).
- Melchels FP, Feijen J, Grijpma DW. 2010.** A review on stereolithography and its applications in biomedical engineering. *Biomaterials* **31**:6121–6130 DOI [10.1016/j.biomaterials.2010.04.050](https://doi.org/10.1016/j.biomaterials.2010.04.050).
- Meteyer S, Xu X, Perry N, Zhao YF. 2014.** Energy and material flow analysis of binder-jetting additive manufacturing processes. *Procedia CIRP* **15**:19–25 DOI [10.1016/j.procir.2014.06.030](https://doi.org/10.1016/j.procir.2014.06.030).
- Meyer U, Neunzehn J, Wiesmann HP. 2012.** Computer-aided approach for customized cell-based defect reconstruction. *Methods in Molecular Biology* **868**:27–43 DOI [10.1007/978-1-61779-764-4\\_2](https://doi.org/10.1007/978-1-61779-764-4_2).
- Monteiro N, Yelick PC. 2017.** Advances and perspectives in tooth tissue engineering. *Journal of Tissue Engineering and Regenerative Medicine* **11**:2443–2461 DOI [10.1002/term.2134](https://doi.org/10.1002/term.2134).
- Nair LS, Bhattacharyya S, Laurencin CT. 2004.** Development of novel tissue engineering scaffolds via electrospinning. *Expert Opinion on Biological Therapy* **4**:659–668 DOI [10.1517/14712598.4.5.659](https://doi.org/10.1517/14712598.4.5.659).
- Nikolidakis D, Meijer GJ, Oortgiesen DA, Walboomers XF, Jansen JA. 2009.** The effect of a low dose of transforming growth factor beta1 (TGF-beta1) on the early bone-healing around oral implants inserted in trabecular bone. *Biomaterials* **30**:94–99 DOI [10.1016/j.biomaterials.2008.09.022](https://doi.org/10.1016/j.biomaterials.2008.09.022).
- Nixon AJ, Begum L, Mohammed HO, Huibregtse B, O’Callaghan MM, Matthews GL. 2011.** Autologous chondrocyte implantation drives early chondrogenesis and organized repair in extensive full- and partial-thickness cartilage defects in an equine model. *Journal of Orthopaedic Research* **29**:1121–1130 DOI [10.1002/jor.21366](https://doi.org/10.1002/jor.21366).
- Obregon F, Vaquette C, Ivanovski S, Hutmacher DW, Bertassoni LE. 2015.** Three-dimensional bioprinting for regenerative dentistry and craniofacial tissue engineering. *Journal of Orthopaedic Research* **94**:143S–152S DOI [10.1177/0022034515588885](https://doi.org/10.1177/0022034515588885).
- Ohazama A, Modino SA, Miletich I, Sharpe PT. 2004.** Stem-cell-based tissue engineering of murine teeth. *Journal of Orthopaedic Research* **83**:518–522 DOI [10.1177/154405910408300702](https://doi.org/10.1177/154405910408300702).
- Park CH, Kim KH, Rios HF, Lee YM, Giannobile WV, Seol YJ. 2014a.** Spatiotemporally controlled microchannels of periodontal mimic scaffolds. *Journal of Orthopaedic Research* **93**:1304–1312 DOI [10.1177/0022034514550716](https://doi.org/10.1177/0022034514550716).
- Park CH, Kim KH, Rios HF, Lee YM, Giannobile WV, Seol YJ. 2014b.** Spatiotemporally controlled microchannels of periodontal mimic scaffolds. *Journal of Orthopaedic Research* **93**:1304–1312 DOI [10.1177/0022034514550716](https://doi.org/10.1177/0022034514550716).
- Pati F, Song TH, Rijal G, Jang J, Kim SW, Cho DW. 2015.** Ornamenting 3D printed scaffolds with cell-laid extracellular matrix for bone tissue regeneration. *Biomaterials* **37**:230–241 DOI [10.1016/j.biomaterials.2014.10.012](https://doi.org/10.1016/j.biomaterials.2014.10.012).



- Pautke C, Schieker M, Tischer T, Kolk A, Neth P, Mutschler W, Milz S. 2004.** Characterization of osteosarcoma cell lines MG-63, Saos-2 and U-2 OS in comparison to human osteoblasts. *Anticancer Research* **24**:3743–3748.
- Poldervaart MT, Wang H, Van der Stok J, Weinans H, Leeuwenburgh SC, Oner FC, Dhert WJ, Alblas J. 2013.** Sustained release of BMP-2 in bioprinted alginate for osteogenicity in mice and rats. *PLOS One* **8**:e72610 DOI [10.1371/journal.pone.0072610](https://doi.org/10.1371/journal.pone.0072610).
- Przekora A. 2019.** The summary of the most important cell-biomaterial interactions that need to be considered during in vitro biocompatibility testing of bone scaffolds for tissue engineering applications. *Materials Science and Engineering: C* **97**:1036–1051 DOI [10.1016/j.msec.2019.01.061](https://doi.org/10.1016/j.msec.2019.01.061).
- Qian YF, Zhang KH, Chen F, Ke QF, Mo XM. 2011.** Cross-linking of gelatin and chitosan complex nanofibers for tissue-engineering scaffolds. *Journal of Biomaterials Science, Polymer Edition* **22**:1099–1113 DOI [10.1163/092050610X499447](https://doi.org/10.1163/092050610X499447).
- Rai V, Dilisio MF, Dietz NE, Agrawal DK. 2017.** Recent strategies in cartilage repair: a systemic review of the scaffold development and tissue engineering. *Journal of Biomedical Materials Research Part A* **105**:2343–2354 DOI [10.1002/jbm.a.36087](https://doi.org/10.1002/jbm.a.36087).
- Rasperini G, Pilipchuk SP, Flanagan CL, Park CH, Pagni G, Hollister SJ, Giannobile WV. 2015.** 3D-printed bioresorbable scaffold for periodontal repair. *Journal of Orthopaedic Research* **94**:153S–157S DOI [10.1177/0022034515588303](https://doi.org/10.1177/0022034515588303).
- Rath SN, Strobel LA, Arkudas A, Beier JP, Maier AK, Greil P, Horch RE, Kneser U. 2012.** Osteoinduction and survival of osteoblasts and bone-marrow stromal cells in 3D biphasic calcium phosphate scaffolds under static and dynamic culture conditions. *Journal of Cellular and Molecular Medicine* **16**:2350–2361 DOI [10.1111/j.1582-4934.2012.01545x](https://doi.org/10.1111/j.1582-4934.2012.01545x).
- Ricci JL, Clark EA, Murriky A, Smay JE. 2012.** Three-dimensional printing of bone repair and replacement materials: impact on craniofacial surgery. *Journal of Craniofacial Surgery* **23**:304–308 DOI [10.1097/SCS.0b013e318241dc6e](https://doi.org/10.1097/SCS.0b013e318241dc6e).
- Sachs E, Cima M, Cornie J. 1990.** Three-dimensional printing: rapid tooling and prototypes directly from a CAD model. *CIRP Annals* **39**:201–204 DOI [10.1016/S0007-8506\(07\)61035-X](https://doi.org/10.1016/S0007-8506(07)61035-X).
- Schek RM, Taboas JM, Hollister SJ, Krebsbach PH. 2005.** Tissue engineering osteochondral implants for temporomandibular joint repair. *Orthodontics & Craniofacial Research* **8**:313–319 DOI [10.1111/j.1601-6343.2005.00354.x](https://doi.org/10.1111/j.1601-6343.2005.00354.x).
- Schuller-Ravoo S, Teixeira SM, Feijen J, Grijpma DW, Poot AA. 2013.** Flexible and elastic scaffolds for cartilage tissue engineering prepared by stereolithography using poly(trimethylene carbonate)-based resins. *Macromolecular Bioscience* **13**:1711–1719 DOI [10.1002/mabi.201300399](https://doi.org/10.1002/mabi.201300399).
- Shim JH, Kim SE, Park JY, Kundu J, Kim SW, Kang SS, Cho DW. 2014.** Three-dimensional printing of rhBMP-2-loaded scaffolds with long-term delivery for enhanced bone regeneration in a rabbit diaphyseal defect. *Tissue Engineering Part A* **20**:1980–1992 DOI [10.1089/ten.TEA.2013.0513](https://doi.org/10.1089/ten.TEA.2013.0513).
- Simpson RL, Wiria FE, Amis AA, Chua CK, Leong KF, Hansen UN, Chandrasekaran M, Lee MW. 2008.** Development of a 95/5 poly(L-lactide-co-glycolide)/hydroxylapatite



- and beta-tricalcium phosphate scaffold as bone replacement material via selective laser sintering. *Journal of Biomedical Materials Research Part B Applied Biomaterials* 84:17–25 DOI 10.1002/jbm.b.30839.
- Skoog SA, Goering PL, Narayan RJ. 2014.** Stereolithography in tissue engineering. *Journal of Materials Science: Materials in Medicine* 25:845–856 DOI 10.1007/s10856-013-5107-y.
- Soman P, Fozdar DY, Lee JW, Phadke A, Varghese S, Chen S. 2012.** A three-dimensional polymer scaffolding material exhibiting a zero Poisson's ratio. *Soft Matter* 8:4946–4951 DOI 10.1039/C2SM07354D.
- Smith MH, Flanagan CL, Kemppainen JM, Sack JA, Chung H, Das S, Hollister SJ, Feinberg SE. 2007.** Computed tomography-based tissue-engineered scaffolds in craniomaxillofacial surgery. *International Journal of Medical Robotics* 3:207–216 DOI 10.1002/rcs.143.
- Stone KR, Walgenbach AW, Abrams JT, Nelson J, Gillett N, Galili U. 1997.** Porcine and bovine cartilage transplants in cynomolgus monkey: I. A model for chronic xenograft rejection. *Transplantation* 63:640–645 DOI 10.1097/00007890-199703150-00005.
- Tamimi F, Torres J, Al-Abedalla K, Lopez-Cabarcos E, Alkhraisat MH, Bassett DC, Gbureck U, Barralet JE. 2014.** Osseointegration of dental implants in 3D-printed synthetic onlay grafts customized according to bone metabolic activity in recipient site. *Biomaterials* 35:5436–5445 DOI 10.1016/j.biomaterials.2014.03.050.
- Temple JP, Hutton DL, Hung BP, Huri PY, Cook CA, Kondragunta R, Jia X, Grayson WL. 2014a.** Engineering anatomically shaped vascularized bone grafts with hASCs and 3D-printed PCL scaffolds. *Journal of Biomedical Materials Research Part A* 102:4317–4325 DOI 10.1002/jbm.a.35107.
- Temple JP, Hutton DL, Hung BP, Huri PY, Cook CA, Kondragunta R, Jia X, Grayson WL. 2014b.** Engineering anatomically shaped vascularized bone grafts with hASCs and 3D-printed PCL scaffolds. *Journal of Biomedical Materials Research Part A* 102:4317–4325 DOI 10.1002/jbm.a.35107.
- Tong HW, Wang M, Lu WW. 2012.** Electrospinning and evaluation of PHBV-based tissue engineering scaffolds with different fibre diameters, surface topography and compositions. *Journal of Biomaterials Science, Polymer Edition* 23:779–806 DOI 10.1163/092050611X560708.
- Torres J, Tamimi F, Alkhraisat MH, Prados-Frutos JC, Rastikerdar E, Gbureck U, Barralet JE, Lopez-Cabarcos E. 2011a.** Vertical bone augmentation with 3D-synthetic monetite blocks in the rabbit calvaria. *Journal of Clinical Periodontology* 38:1147–1153 DOI 10.1111/j.1600-051X.2011.01787.x.
- Torres K, Staskiewicz G, Sniezynski M, Drop A, Maciejewski R. 2011b.** Application of rapid prototyping techniques for modelling of anatomical structures in medical training and education. *Folia morphologica* 70(1):1–4.
- Townsend-Nicholson A, Jayasinghe SN. 2006.** Cell electrospinning: a unique biotechnology for encapsulating living organisms for generating active biological microthreads/scaffolds. *Biomacromolecules* 7:3364–3369 DOI 10.1021/bm060649h.

- Van Bael S, Desmet T, Chai YC, Pyka G, Dubruel P, Kruth JP, Schrooten J. 2013.** In vitro cell-biological performance and structural characterization of selective laser sintered and plasma surface functionalized polycaprolactone scaffolds for bone regeneration. *Materials Science and Engineering: C* **33**(6):3404–3412 DOI [10.1016/j.msec.2013.04.024](https://doi.org/10.1016/j.msec.2013.04.024).
- Von der Mark K, Gauss V, Von der Mark H, Muller P. 1977.** Relationship between cell shape and type of collagen synthesised as chondrocytes lose their cartilage phenotype in culture. *Nature* **267**:531–532 DOI [10.1038/267531a0](https://doi.org/10.1038/267531a0).
- Walter SG, Ossendorff R, Schildberg FA. 2019.** Articular cartilage regeneration and tissue engineering models: a systematic review. *Archives of Orthopaedic and Trauma Surgery* **139**:305–316 DOI [10.1007/s00402-018-3057-z](https://doi.org/10.1007/s00402-018-3057-z).
- Wang X, Schroder HC, Feng Q, Draenert F, Muller WE. 2013.** The deep-sea natural products, biogenic polyphosphate (Bio-PolyP) and biogenic silica (Bio-Silica), as biomimetic scaffolds for bone tissue engineering: fabrication of a morphogenetically-active polymer. *Marine Drugs* **11**:718–746 DOI [10.3390/md11030718](https://doi.org/10.3390/md11030718).
- Wang X, Schroder HC, Grebenjuk V, Diehl-Seifert B, Mailander V, Steffen R, Schlossmacher U, Muller WE. 2014.** The marine sponge-derived inorganic polymers, biosilica and polyphosphate, as morphogenetically active matrices/scaffolds for the differentiation of human multipotent stromal cells: potential application in 3D printing and distraction osteogenesis. *Marine Drugs* **12**:1131–1147 DOI [10.3390/md12021131](https://doi.org/10.3390/md12021131).
- Warnke PH, Seitz H, Warnke F, Becker ST, Sivananthan S, Sherry E, Liu Q, Wiltfang J, Douglas T. 2010.** Ceramic scaffolds produced by computer-assisted 3D printing and sintering: characterization and biocompatibility investigations. *Journal of Biomedical Materials Research Part B Applied Biomaterials* **93**:212–217 DOI [10.1002/jbm.b.31577](https://doi.org/10.1002/jbm.b.31577).
- Warren SM, Fong KD, Chen CM, Lobo EG, Cowan CM, Lorenz HP, Longaker MT. 2003.** Tools and techniques for craniofacial tissue engineering. *Tissue Engineering* **9**:187–200 DOI [10.1089/107632703764664666](https://doi.org/10.1089/107632703764664666).
- Williams JM, Adewunmi A, Schek RM, Flanagan CL, Krebsbach PH, Feinberg SE, Hollister SJ, Das S. 2005.** Bone tissue engineering using polycaprolactone scaffolds fabricated via selective laser sintering. *Biomaterials* **26**:4817–4827 DOI [10.1016/j.biomaterials.2004.11.057](https://doi.org/10.1016/j.biomaterials.2004.11.057).
- Xu T, Binder KW, Albanna MZ, Dice D, Zhao W, Yoo JJ, Atala A. 2013.** Hybrid printing of mechanically and biologically improved constructs for cartilage tissue engineering applications. *Biofabrication* **5**:15001–15010 DOI [10.1088/1758-5082/5/1/015001](https://doi.org/10.1088/1758-5082/5/1/015001).
- Xue SH, Lv PJ, Wang Y, Zhao Y, Zhang T. 2013.** Three dimensional bioprinting technology of human dental pulp cells mixtures. *Beijing Da Xue Xue Bao Yi Xue Ban* **45**:105–108.
- Yao Q, Wei B, Liu N, Li C, Guo Y, Shamie AN, Chen J, Tang C, Jin C, Xu Y, Bian X, Zhang X, Wang L. 2015.** Chondrogenic regeneration using bone marrow clots and a porous polycaprolactone-hydroxyapatite scaffold by three-dimensional printing. *Tissue Engineering Part A* **21**:1388–1397 DOI [10.1089/ten.TEA.2014.0280](https://doi.org/10.1089/ten.TEA.2014.0280).

- Yen HJ, Hsu SH, Tseng CS, Huang JP, Tsai CL. 2009.** Fabrication of precision scaffolds using liquid-frozen deposition manufacturing for cartilage tissue engineering. *Tissue Engineering Part A* **15**:965–975 DOI [10.1089/ten.tea.2008.0090](https://doi.org/10.1089/ten.tea.2008.0090).
- Yoshioka T, Mishima H, Sakai S, Uemura T. 2013.** Long-term results of cartilage repair after allogeneic transplantation of cartilaginous aggregates formed from bone marrow-derived cells for large osteochondral defects in rabbit knees. *Cartilage* **4**:339–344 DOI [10.1177/1947603513494003](https://doi.org/10.1177/1947603513494003).
- Zamani R, Aval SF, Pilehvar-Soltanahmadi Y, Nejati-Koshki K, Zarghami N. 2018.** Recent advances in cell electrospinning of natural and synthetic nanofibers for regenerative medicine. *Drug Research* **68**:425–435 DOI [10.1055/s-0043-125314](https://doi.org/10.1055/s-0043-125314).
- Zhang W, Lian Q, Li D, Wang K, Hao D, Bian W, He J, Jin Z. 2014.** Cartilage repair and subchondral bone migration using 3D printing osteochondral composites: a one-year-period study in rabbit trochlea. *Biomed Research International* **2014**:746138 DOI [10.1155/2014/746138](https://doi.org/10.1155/2014/746138).
- Zhou WY, Lee SH, Wang M, Cheung WL, Ip WY. 2008.** Selective laser sintering of porous tissue engineering scaffolds from poly(L: -lactide)/carbonated hydroxyapatite nanocomposite microspheres. *Journal of Materials Science: Materials in Medicine* **19**(7):2535–2540 DOI [10.1007/s10856-007-3089-3](https://doi.org/10.1007/s10856-007-3089-3).
- Zigang G, Lishan W, Boon CH, Tian XF, Kai L, Tai WFV, Jin FY, Tong C, Tan E. 2009.** Proliferation and differentiation of human osteoblasts within 3D printed polylactic-co-glycolic acid scaffolds. *Journal of Biomaterials Applications* **23**:533–547 DOI [10.1177/0885328208094301](https://doi.org/10.1177/0885328208094301).
- Zopf DA, Mitsak AG, Flanagan CL, Wheeler M, Green GE, Hollister SJ. 2015.** Computer aided-designed, 3-dimensionally printed porous tissue bioscaffolds for craniofacial soft tissue reconstruction. *Otolaryngology- Head and Neck Surgery* **152**:57–62 DOI [10.1177/0194599814552065](https://doi.org/10.1177/0194599814552065).