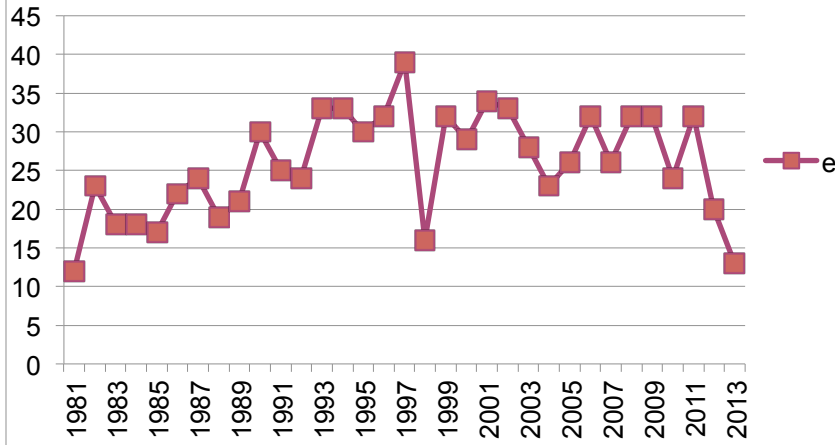
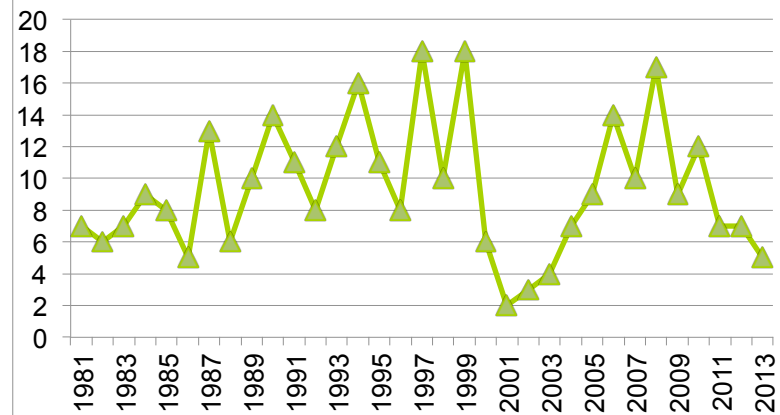


ANADAMENTO DEI CARCINOMI GINECOLOGICI DAL 1981 AL 2013

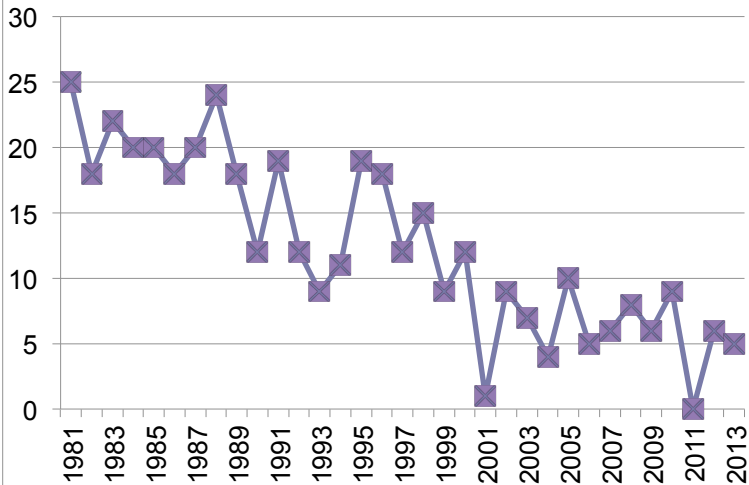
Ciarcinoma endometriale



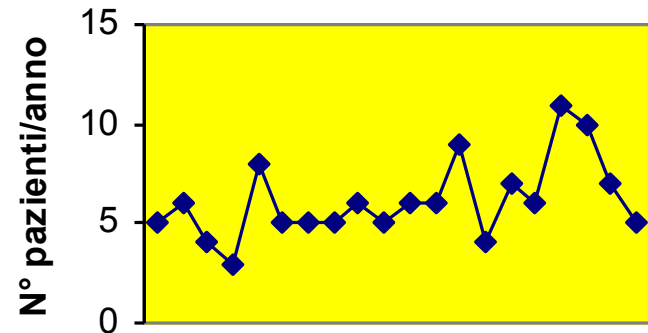
Carcinoma ovarico



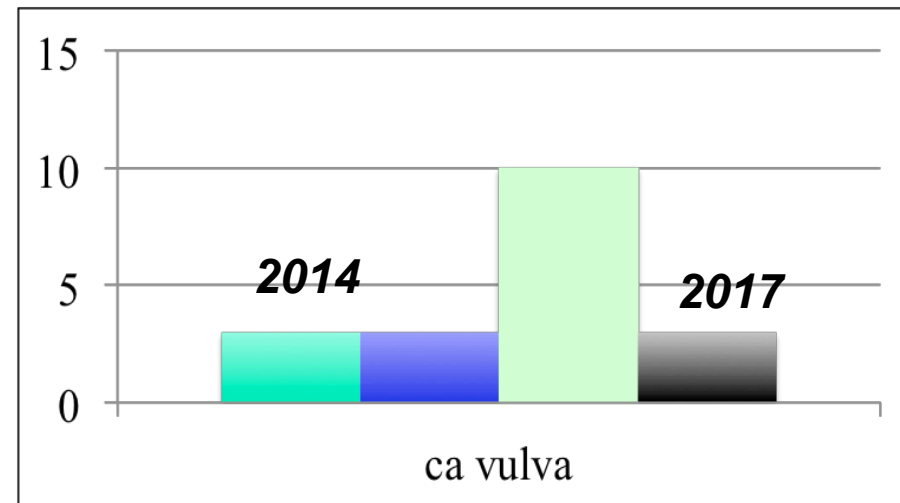
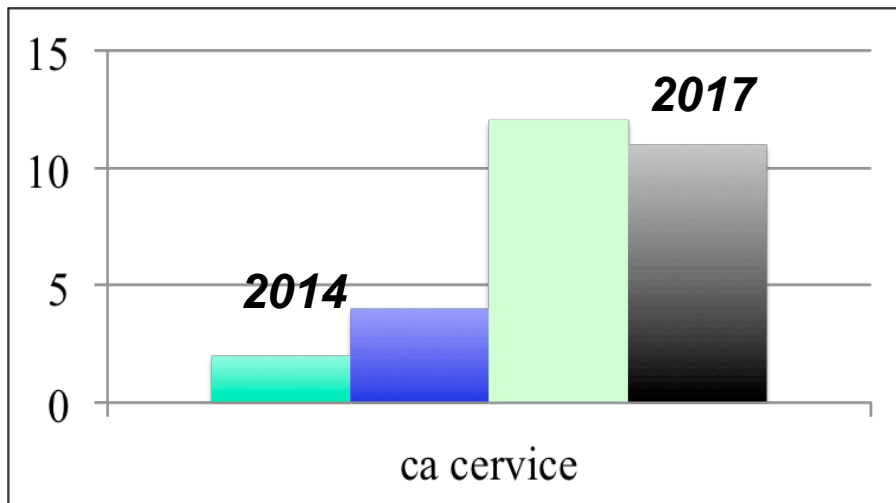
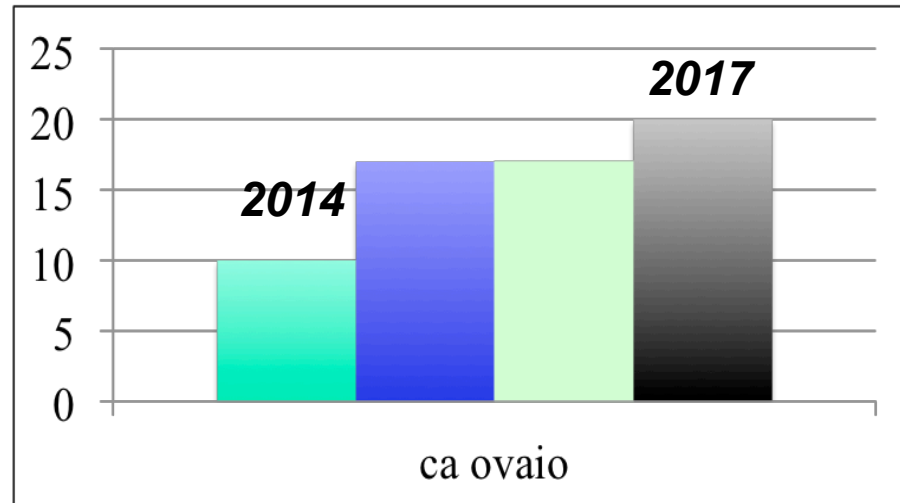
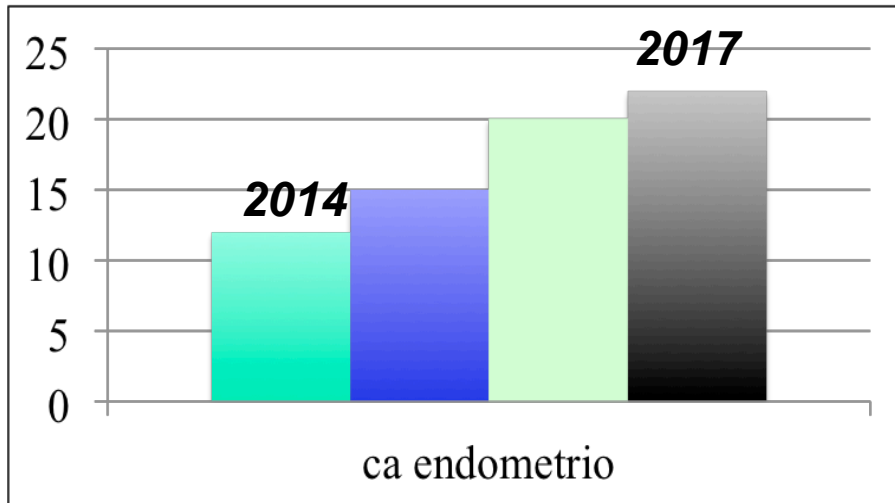
Carcinoma della cervice

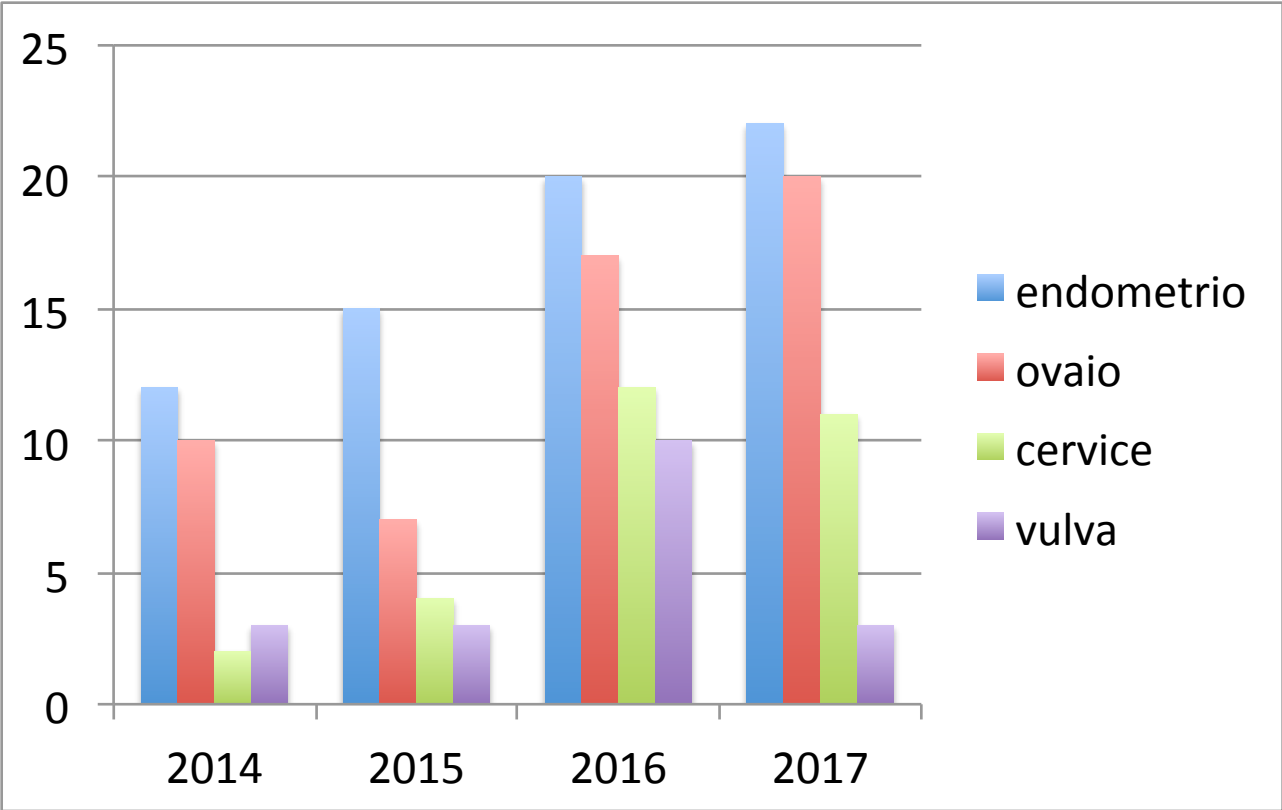


Carcinoma della vulva



ANDAMENTO CASI ONCOLOGICI 2014-2017 PRESSO CLINICA OSTETRICA E GINECOLOGICA





ISTAT : Frequenza delle neoplasie dell' apparato genitale femminile in Italia

Tipo carcinoma	nuovi casi/anno	decessi/anno
Endometrio	5400	1600
Ovaio	4150	2700
Cervice	3700	1700

Distribuzione degli stadi per tipo di carcinoma

