

Interreg
Italy - Croatia

European Regional Development Fund



**Catching the European wind
to sail in the blue cooperation space**
Shared resources, joint solutions



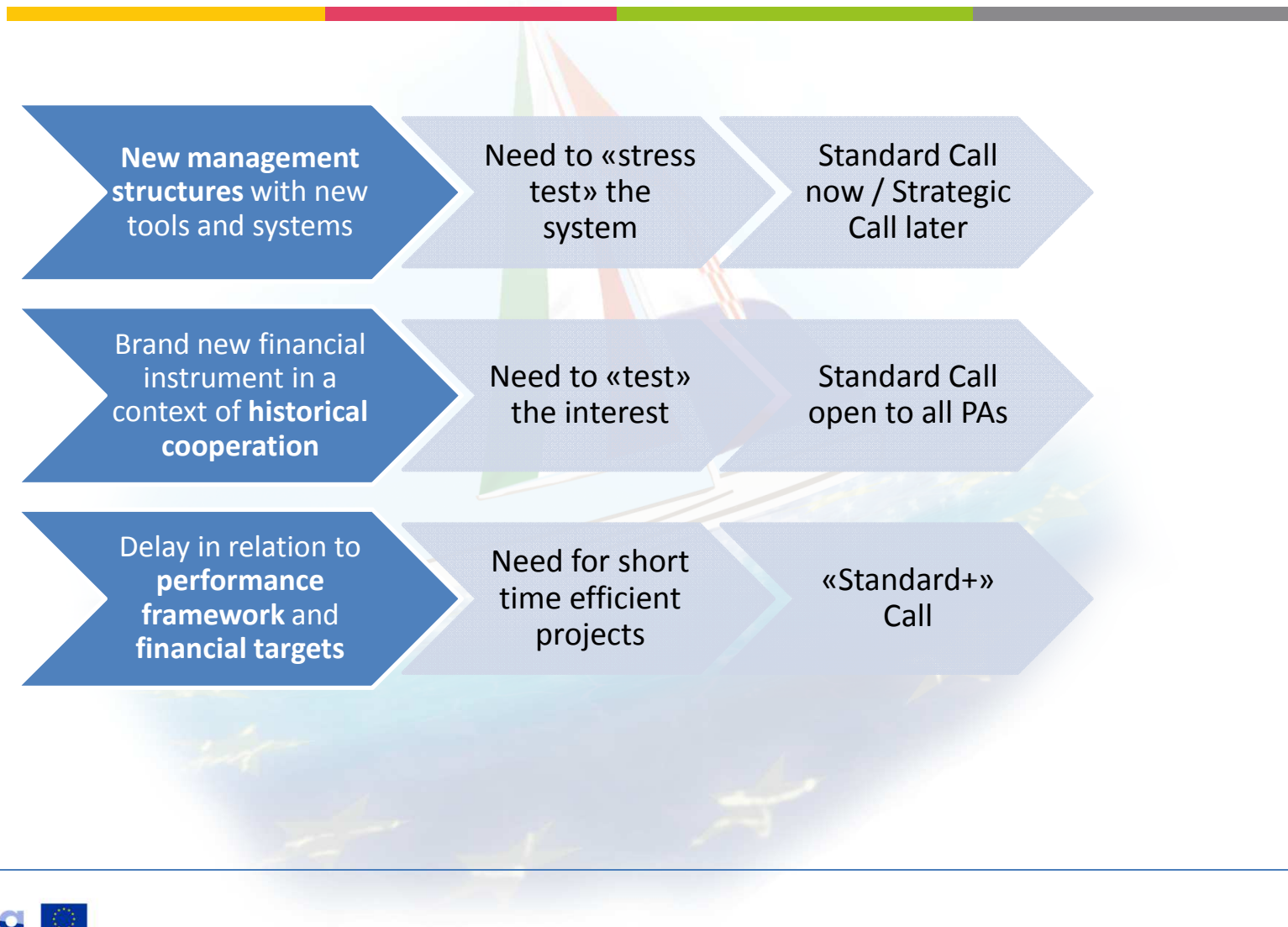
Italy – Croatia CBC Programme

7th – 8th November 2016

Scuola Grande San Giovanni Evangelista
Venice

Main elements of the First Call for Proposals

The first set of Calls for Proposals



«Standard» and «Standard+»

Two procedures for two types of project proposals:

Standard: a (public) intervention typically originating from the acknowledgement of a problem or a need and a testing of a potential solution normally developed on the basis of an innovative project concept, although capitalisation of previous programming periods' projects and results is certainly encouraged

Standard+: operation capitalising the achievements of the previous programming period – by means of piloting, testing or implementing in the CB area solutions developed in a different or larger scale context supported by a 2007 – 2013 ETC financial instrument in which Italian and Croatian partners already worked together (*Adriatic IPA CBC, SEE and MED*)

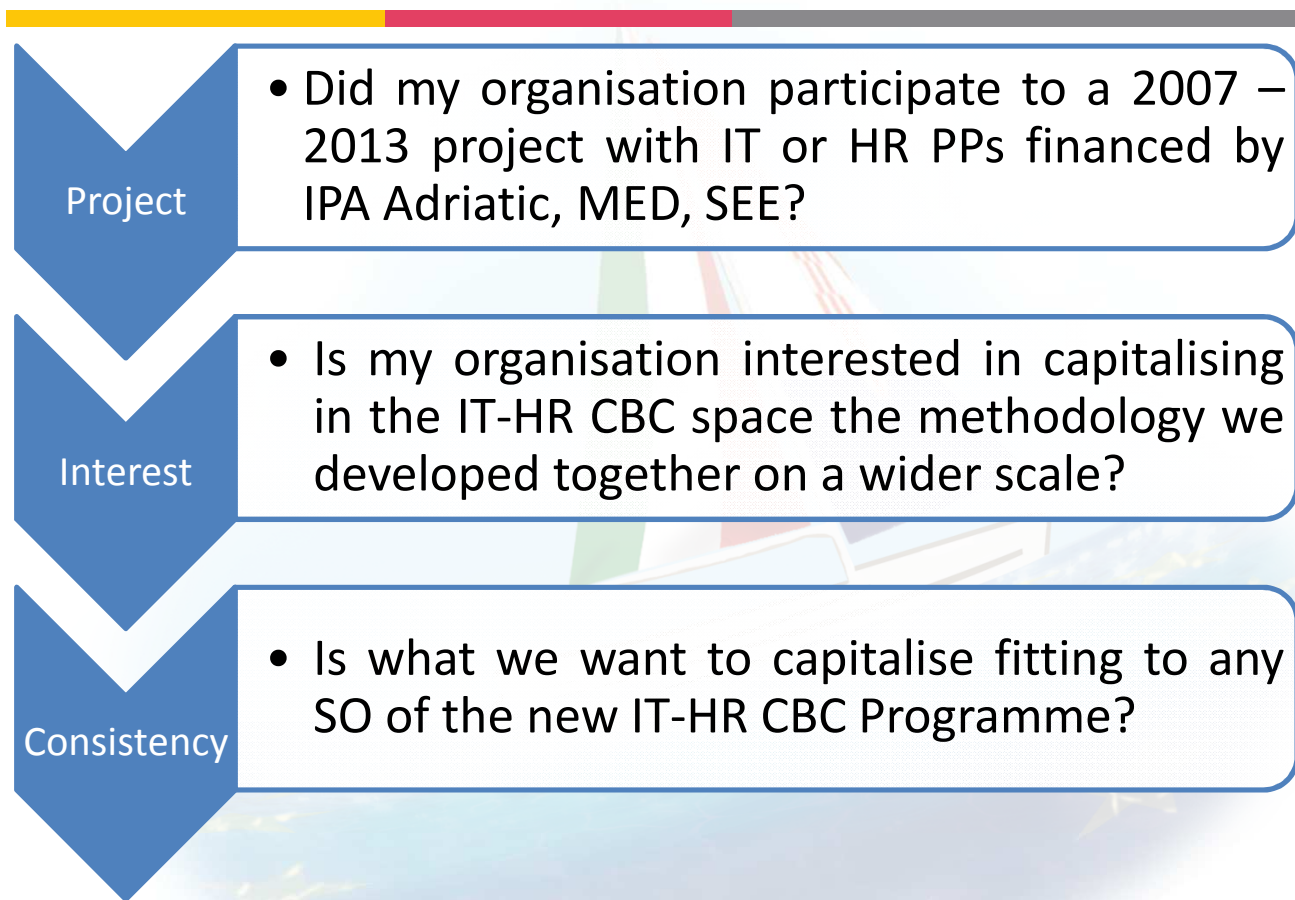
«Standard»

- call open for all Priority Axes and Specific Objectives (Ranking list per PA)
- project has to involve at least **four** partners, located in each of the two countries of the Programme area (at least one per country)
- financial dimension per project: minimum ERDF contribution 500.000 Euro – max ERDF contribution 3.000.000 Euro; minimum ERDF contribution per PP 50.000 Euro
- under discussion: one institution cannot be Lead Applicant in more than 2 proposals per each Programme Specific Objective
- max duration in time **30 months**

«Standard+»

- call open for all Priority Axes and Specific Objectives (Ranking list per PA)
- the project has to involve at least **three** partners, located in each of the two countries of the Programme area (at least one per country) that were members of the partnership of the previously financed project
- financial dimension per project: minimum ERDF contribution 500.000 Euro – max ERDF contribution 1.000.000 Euro; minimum ERDF contribution per PP 50.000 Euro
- one institution cannot be lead applicant in more than one “Standard+” proposal
- max duration in time **18 months**
- the 2007-2013 project can generate **only one “Standard+” proposal**

«Standard+»: the correct approach



«Standard+»: the correct approach

Competition

- Did I check with the other original IT/HR partners they are not doing the same (in a competitive way)?

Partners

- Do I have on board at least one additional IT/HR PP belonging to the original partnership?

Lead Applicant

- Am I sure this is the only project I want to capitalise as Lead Applicant?

«Standard+»: Yes or No

Did I answer «yes» to all questions



«Standard+» Call is for me!

If not, «Standard» Call can be an option...

Eligibility of bodies



All bodies/institutions interested in being part of a project proposal must fulfil all the following criteria:

- established under the national law of Italy or Croatia
- have their official seat and their seat of operations in the part of the country included in the Programme area
- be endowed with legal personality

In addition to what above, eligible partners shall be:

- National, regional and local public bodies
- Bodies governed by public law
- Private bodies
- International organisations

Eligibility of bodies



Assimilated Partners (under discussion):

(public bodies or bodies governed by public law established under the national law of Italy or Croatia) that are competent in their scope of action for certain parts of the eligible area (e.g.: Ministries, Regional Governments including their agencies, etc.) or are anyhow relevant for the eligible area but which are located outside of it are considered as assimilated partners, with equal rights and obligations to applicants located within the programme area

In case of Universities, they can be considered as Assimilated partners if they have a branch in the eligible area

Restrictions for Lead Applicants

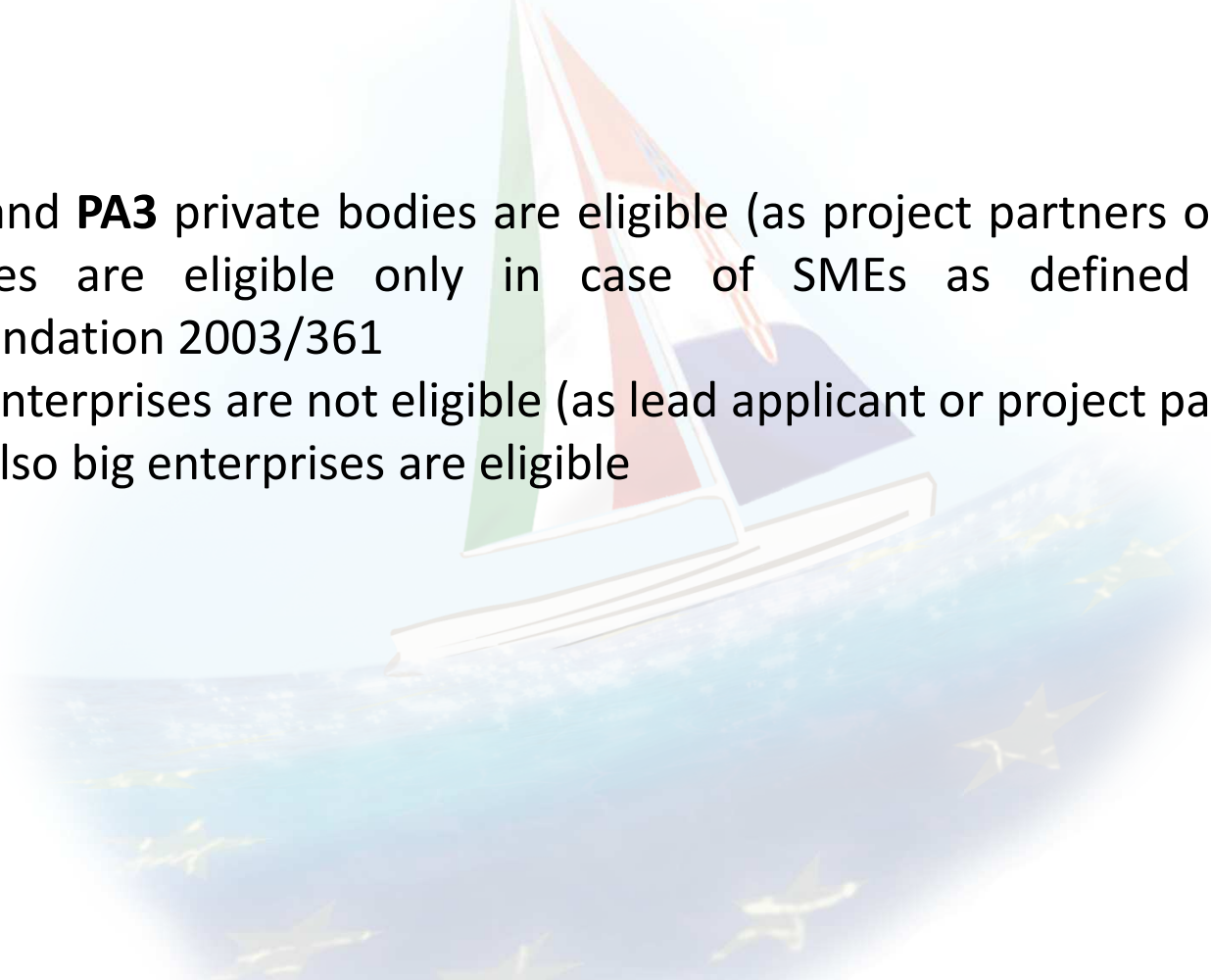


Only the following bodies located in Italy or Croatia shall be considered as eligible lead applicants:

- **Public bodies** (national, regional or local level) including associations constituted by one or several regional or local public authorities
- **Bodies governed by public law**, including associations constituted by one or several bodies governed by public law

Specific restrictions per Priority Axis



- For **PA1** and **PA3** private bodies are eligible (as project partners only) but enterprises are eligible only in case of SMEs as defined by EU recommendation 2003/361
 - For **PA2** enterprises are not eligible (as lead applicant or project partners)
 - For **PA4** also big enterprises are eligible
- 

First Call indicative financial allocation

Priority Axis	Total Programme ERDF €	Indicative ERDF allocation «Standard»	Indicative ERDF allocation «Standard+»
1 Blue Innovation	24.162.867	9.670.000,00	3.000.000,00
2 Safety and resilience	51.346.091	7.700.000,00	2.000.000,00
3 Environment and cultural heritage	70.475.027	25.000.000,00	3.000.000,00
4 Maritime transport	43.291.802	10.830.000,00	2.000.000,00
Total €	189.275.787	53.200.000	10.000.000

85% ERDF Co-financing for Italian and Croatian partners
15% National Co-financing ruled by respective Member States

Budget lines

- Preparation costs
- Staff
- Office and administration
- External expertise and services
- Travel and accommodation
- Equipment
- Small scale infrastructures and construction works

Selection procedure



The assessment of project proposals is carried out by the JS

The projects assessment procedure is based on criteria divided into:

- Admissibility criteria
- Eligibility criteria
- Quality Assessment criteria, divided into the following sub-groups:
 - *Content related assessment – strategic criteria*
 - *Implementation related assessment – operational criteria*
 - *Specific criteria per SO*
- Assessment according to State Aid relevance

Quality Assessment: strategic criteria



Strategic criteria

- Project context
- Cooperation character
- Project's contribution to Programme's objectives
- Partnership

Largely mirroring HIT standards: <http://www.interact-eu.net/harmonised-tools/hit>

Under discussion: setting up of a threshold score for the overall strategic criteria

Quality Assessment: operational criteria



Operational criteria

- Management
- Communication
- Work Plan
- Budget

Largely mirroring HIT standards: <http://www.interact-eu.net/harmonised-tools/hit>

Call Documents availability



Programme **factsheets** will be made available in the Application Package and will consist of:

- Factsheet n. 1 “Introduction and Background”
- Factsheet n. 2 “ Project Generation”
- Factsheet n. 3 “ Project Development”
- Factsheet n. 4 “ Project Application”
- Factsheet n. 5 “ Project Selection”

Documents will be made available immediately after approval before the opening of the call

When to expect the CfP opening?



December 2016:

- Finalisation of the recruitment of the JS staff in Venice (4 PMs + 3 Assistants) and in Zadar and Dubrovnik (4 PMs)
- Approval of the main documents and selection criteria by MC
- Conclusion of the adaptation process of the application module of the Monitoring System (including testing)

January/ February 2017 as target

Some suggestions...

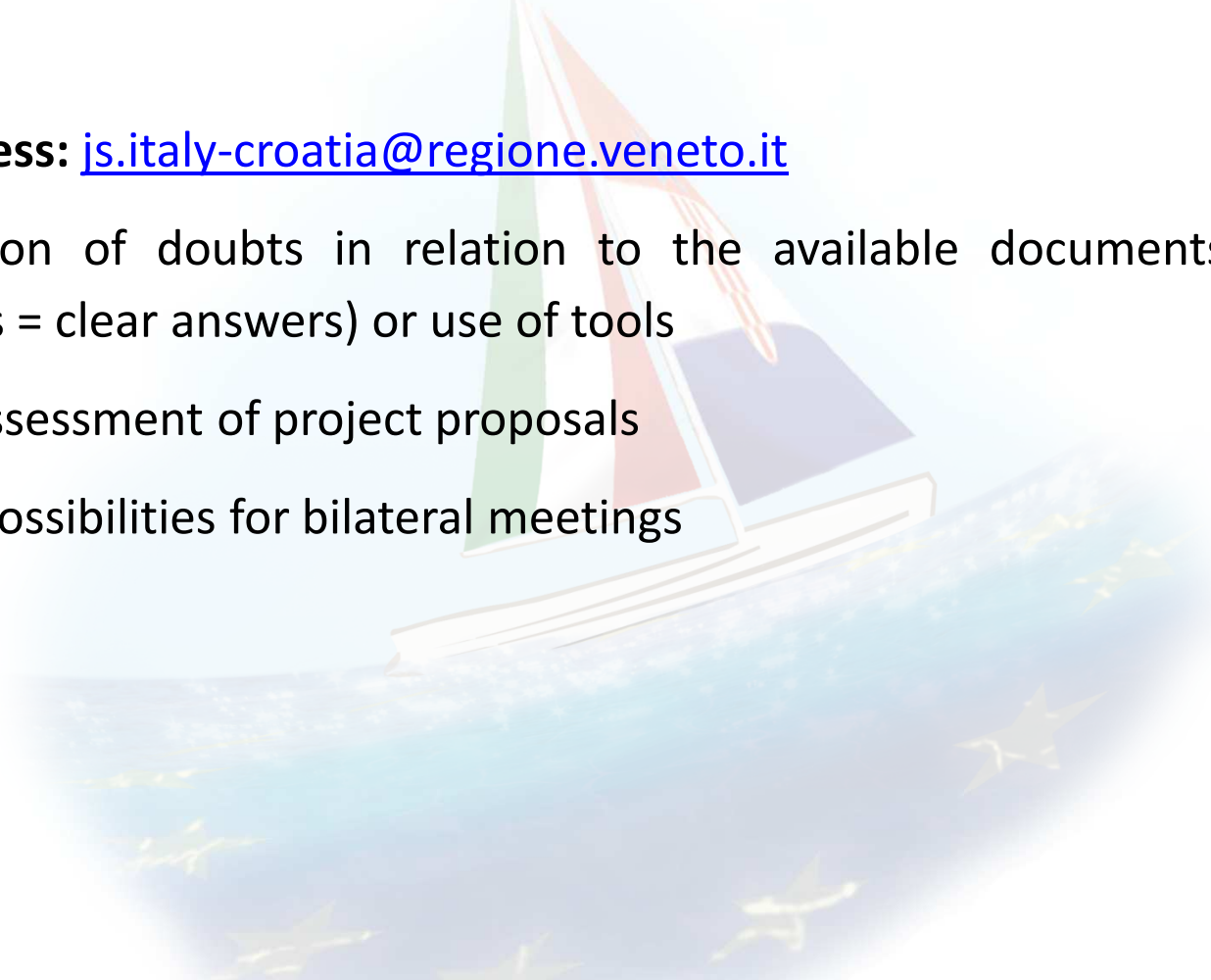


- Rules will largely mirror the common INTERREG practices => nothing prevents you to start preparing the proposal now!
- Calls will be open for a reasonable time (60 days / 45 days) IF you have just to finalise the preparation and submit (not for start looking for PPs!!)
- “Just for the sake of trying” approach will not be welcomed => overload of (low quality) applications is dragging out the procedure
- We welcome genuine co-operation (even in a rather unbalanced context)
- Read the documents, if something is unclear read them again, THEN if something keeps being unclear contact JS for clarification

Joint Secretariat support (until fully staffed)



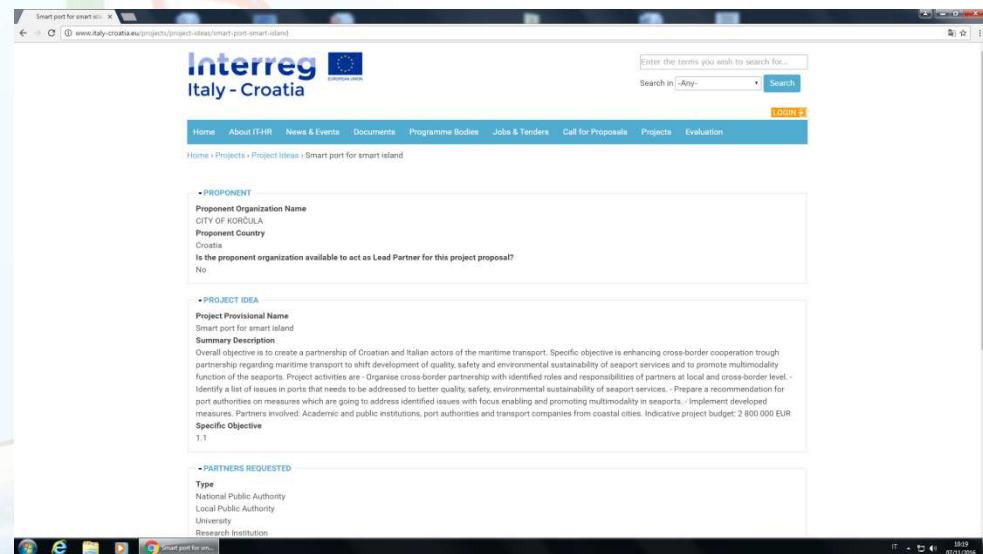
E-mail address: js.italy-croatia@regione.veneto.it

- Clarification of doubts in relation to the available documents (clear questions = clear answers) or use of tools
 - No pre-assessment of project proposals
 - Limited possibilities for bilateral meetings
- 

Web-site tools

The **Project Idea tool** is a way for organisations that have an initial idea for a project, to circulate it to find suitable partners and help further develop the idea

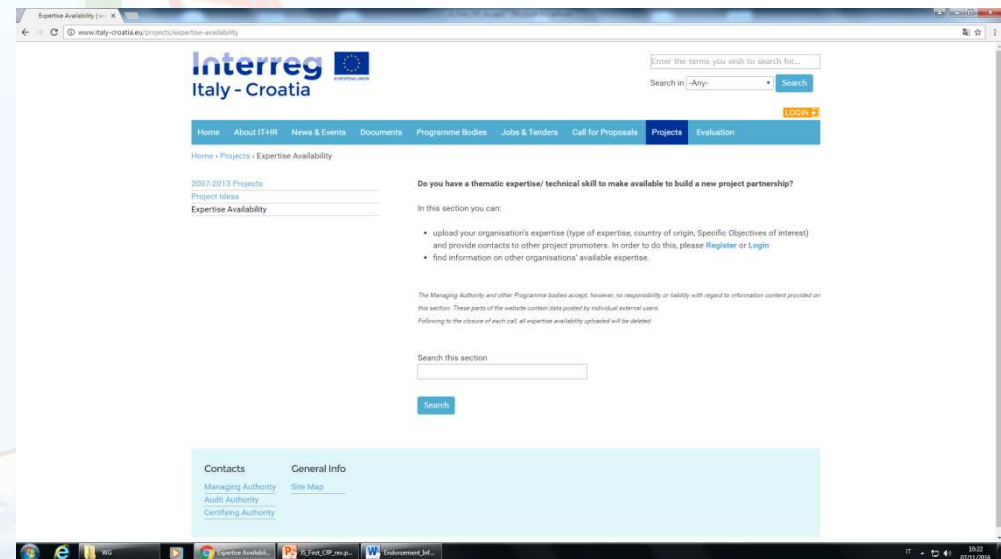
The tool can be found on the website of the Interreg Italy – Croatia CBC Programme (<http://www.italy-croatia.eu/projects/project-ideas>)



Web-site tools

The **Expertise Availability** tool is a way for organisations that possess a certain expertise to make it available to other organisations in order to build a partnership and develop a project proposal

The tool can be found on the website of the Interreg Italy – Croatia CBC Programme (<http://www.italy-croatia.eu/projects/expertise-availability>)





Fair Winds and Following Seas!

Thanks for your attention

js.italy-croatia@regione.veneto.it