



National Info Day: Verona, 20 February 2015 - Torino, 23 February 2015

CENTRAL EUROPE first call for proposals

Chiara Casarella - Joint Secretariat



First call key features



Budget: up to EUR 80 million ERDF



Themes: all programme priorities
all programme specific objectives



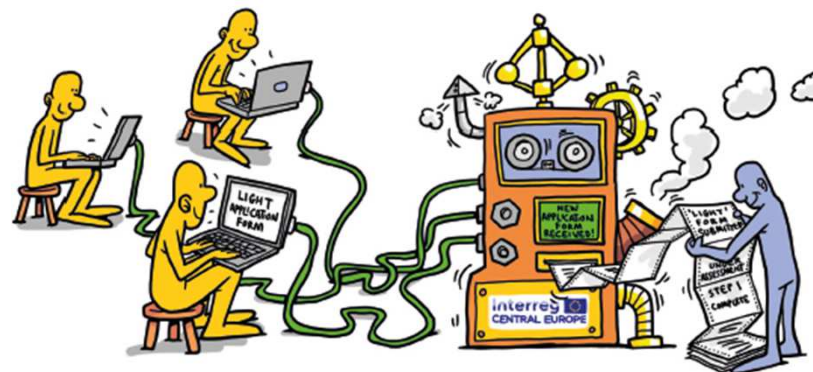
Procedure: competitive two-step call



Submission: online application form

Launch (step1): 12 February 2015

Closure (step 1): 13 April 2015



Who can participate?



- ✓ **Public institutions** (national, regional, local; including EGTC)
- ✓ **Private institutions** (including private companies, having legal personality)
- ✓ **International organisations** acting under the national law of any CENTRAL EUROPE Member State or, with restrictions, under international law

- Private institutions can be lead partners in **all programme priorities**
- Private lead applicants must fulfil **minimum financial capacity requirements** (self-assessment tool)

Project partnership & characteristics



At least **three financing partners from three countries**, at least two of them located in the CENTRAL EUROPE area



Recommended **financial size**:

EUR 1 to 5 million total project budget
(smaller or larger projects acceptable in exceptional cases)

Recommended **maximum size of the partnership**: 12 partners, it should reflect project scope and stay manageable (larger partnerships not excluded if justified)



Recommended **project duration**:

30 to 36 months (up to maximum 48 months)

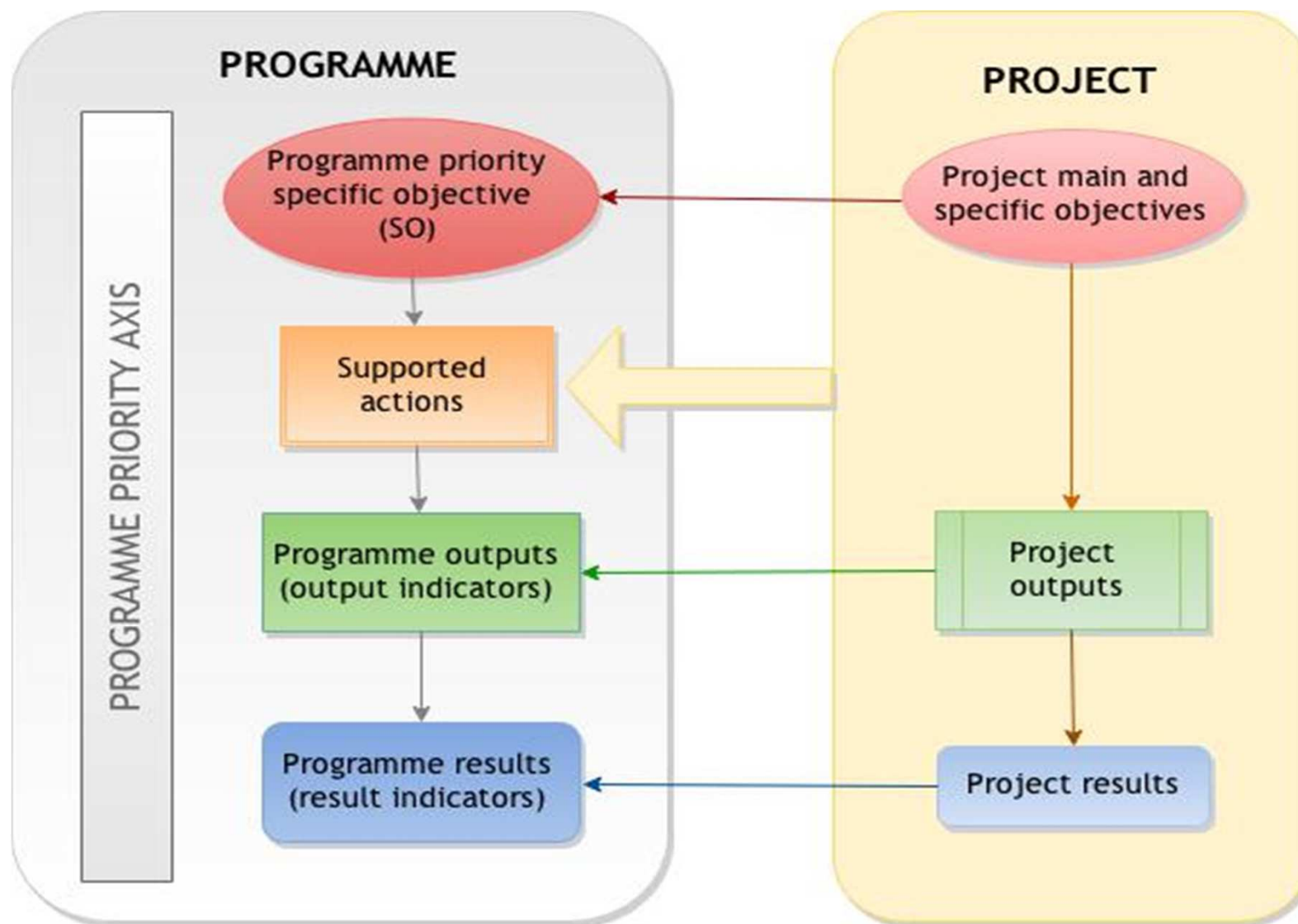
Features of successful projects



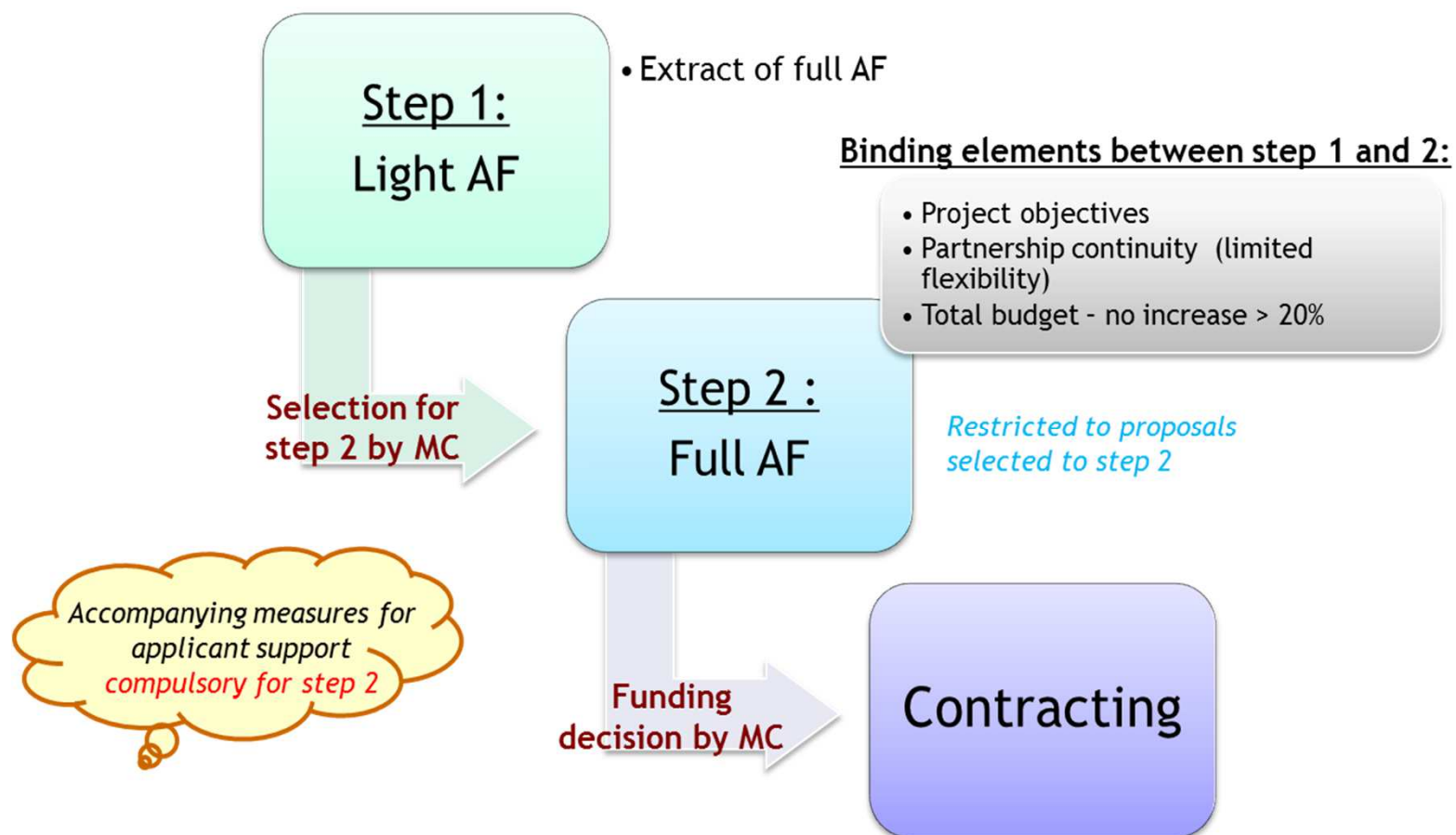
- Transnational and territorial relevance
- Relevance and capacity of the partnership
- Delivery of concrete and measurable results reflecting a change
- Durability of outputs and results
- Coherence (work plan)
- Strategically relevant
- Communication
- Effective project management
- Sound budget



Programme/project intervention logic




Competitive two-step procedures



Application form (light and full AF)



Section	Light AF (step 1)		Full AF (step 2)
	Headers (sub-sections)		Headers (sub-sections)
A	Project overview		Project overview
	A.1 Project identification		A.1 Project identification
	A.2 Project summary		A.2 Project summary
	Indicative project budget (total per partner - table only in step 1)		A.3 Project budget summary - breakdown per partner
B	Project partners		Project partners
	B.1 Lead partner/project partners		B.1 Lead partner/project partners
C	Project description		Project description
	C.1 Project relevance		C.1 Project relevance
	C.2 Project focus		C.2 Project focus
	C.3 Project context		C.3 Project context
D	Work plan		C.4 Horizontal principles and additional indicators
	D.1 Summary description of thematic work packages		Work plan (including time line)
	D.3 Periods		D.1 Work package description
			D.2 Target groups
E/F	Partner budget		D.3 Periods
	Indicative project budget per partner (table only in step 1)		D.4 Activities outside the programme area
G	Annexes		Project budget
	• Lead applicant declaration		E Partner budget
			F Project budget overview
			Annexes
			• Lead applicant declaration
			• Partner declarations
			• Supporting documents for private lead applicants (if applicable)

Continuity requirements between step 1 and 2:

- Project objectives
- Partnership
 - No change of lead applicant
 - Limited flexibility of partner changes
- Budget
 - Limited flexibility

Assessment: step 1 of the call



Strategic criteria: relevance and transnational dimension of applications as well as the extent of their contribution to achieving a programme specific objective



RELEVANCE

- To programme intervention logic
- To challenges/ needs of programme area
- Transnational added value



PARTNERSHIP

- Partnership relevance and suitability
- Transnational cooperation character

Assessment: step 2 of the call



Step 2: Strategic assessment criteria

RELEVANCE



- To programme intervention logic
- To territorial challenges/ needs of participating regions
- Coherence with policies, horizontal principles
- Transnational added value and innovative character, synergies

PARTNERSHIP



- Partnership relevance and suitability
- Transnational cooperation character

Operational assessment criteria

IMPLEMENTATION



- Methodology
- Work plan: structure, consistency, transparency
- Sustainability and transferability
- Management
- Communication

BUDGET

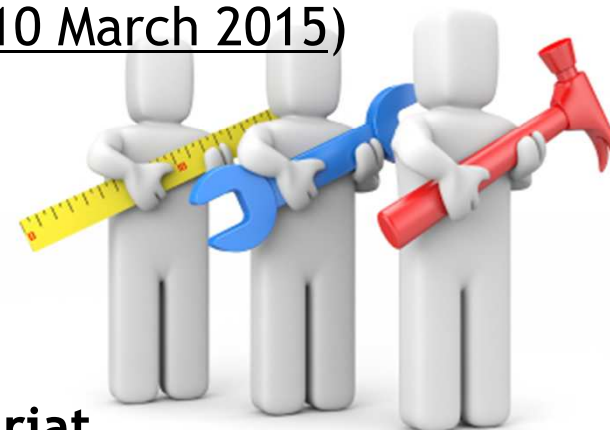


- Value for money
- Coherence with work plan and partner involvement

Programme support to applicants



- ✓ **Website documents:** Interreg CENTRAL EUROPE Cooperation Programme
Application package for the first call
(Call announcement, application manual, AF templates, supporting tools)
Thematic studies analysing 2007-2013 projects
- ✓ **National info-days**
- ✓ **Transnational lead applicant training (step 1: 10 March 2015)**
- ✓ **Information and guidance by the network of national contact points**
- ✓ **Individual consultations with the joint secretariat**



Application manual




Combines both comprehensive information on programme framework and targeted guidance to applicants for each step of the call (including practical hints and examples)

→ Modular structure consisting of 5 parts

- A. What is Interreg CENTRAL EUROPE
 - B. What projects we are looking for
 - C. How to develop a good project
 - D. How to apply with us (including info about the online submission system)**
 - E. What support we offer
- ANNEXES

Electronic monitoring system (eMS)



 Login
 Registration

EN

eMS 
electronic
monitoring
system

2_0.8b

<https://ems.interreg-central.eu>

helpdesk@interreg-central.eu

Username*
Password* Username required
 Login  Register

IMPORTANT NOTICE:

- Person/user creating the application form (AF) must represent (or be delegated by) the lead applicant institution, should preferably be the contact person of the lead applicant. Can then give user rights to other registered users.
- Always remember to **save the data** before leaving a section in the AF.
- AF can be submitted only by the user who created it.
- As annex to AF only one document needs to be uploaded in step 1: Lead applicant declaration
- After hitting the submit button, AF is considered as final and cannot be changed anymore!





CE Show More

Welcome Chiara casarelli

A - Project overview B - Partner C - Project Description D - Workplan E/F - Partner budget

SECTION A - Project overview

A. 1 Project identification

Programme priority *

1. Cooperating on innovation to make CENTRAL EUROPE more con

Programme specific objective *

1.1 To improve sustainable linkages among actors of the innovation systems for strengthening regional innovation capacity in central Europe

Project acronym *

Project title *

Project number (automatically inserted) *

CE

200 Characters Remaining

Project duration *

0 Month 1 Days

Start date *

12.02.2015

End date *

12.02.2015

A. 2 Project summary *

Please give a short overview of the project and describe in the style of a press release (please cover all the points below)

- the common challenge of the programme area you are jointly tackling in your project
- the main objective of the project and the expected change your project will make to the current situation
- the outputs of the project and who will benefit from them
- the project approach you plan to take and its transnational character
- what is innovative about it
- the transnational added value of the project

2.0-10

[illegible]



eMS
https://ems.interreg-central.eu/emstest/app/main?execution=d128

DATEI Bearbeiten Ansicht Chronik Lesezeichen Extras Hilfe

SAVE

Check Saved Project
Save As Pdf File
User Management
Exit

Help
Copy Project
Logout

EN

A - Project overview B - Partner C - Project Description D - Workplan E/F - Partner budget G - Annexes

C.2 - Project focus

Programme Priority Specific Objective 1.2 To improve skills and entrepreneurial competences for advancing economic and social innovation in central European regions

Programme result (predefined) *
Programme result indicator to which the project has to contribute
R 1.2 Status of capacities of the public and private sector for skills development of employees and

Expected project results *
What are the project's main results and how do they link to the programme result indicator?

Project specific objectives
Which are the specific objectives the project the project aims to achieve?
Define max. 3 project specific objectives.
Project specific objective 1
Title of project specific objective *
Please shortly explain each of the defined specific objectives *
Remove project specific objective

Sustainability and transferability of project outputs and results
How will the project ensure that project outputs and results have a lasting effect beyond project duration?
Please describe concrete measures (including institutional structures, financial resources, etc.) taken during and after project implementation to ensure and/or strengthen the sustainability of the project's outputs and results. Explain how outputs will be further used once the project has been finalised and, if relevant, explain who will be responsible and/or who will be the owner of results and outputs. *

1500 Characters Remaining
750 Characters Remaining

2_0_10

12.02.2015

C. 3 Project context

How does the project contribute to wider strategies and policies? *

Please describe the project's contribution to relevant strategies and policies at different levels (EU/national/regional), in particular those concerning the thematic scope of the project and the participating regions.

Synergies

What are the synergies with other EU projects (past, on-going or planned) as well as other projects or initiatives? Where applicable please refer to existing or planned projects co-funded by EU and/or national/regional funds. In particular please specify if the application is linked to any other proposal under preparation within other EU funds, also specifying the concerned EU-funded programmes (e.g. other Interreg programmes, Horizon 2020, COSME, national or regional programmes supported by ERDF, ESF, cohesion Fund, EAFRD, EMU etc.)

Knowledge

In how far does the project build on available knowledge?
Please describe the experiences/lessons learned the project builds on, and how available knowledge will be used, where applicable, linkages to CENTRAL EUROPE 2007-2013 projects should be highlighted.

Indicate Header

Indicate Description
☐ EU Strategy for the Danube Region
255 Characters Remaining

☐ EU Strategy for the Alpine Region
255 Characters Remaining

☐ EU Strategy for the Baltic Sea Region
255 Characters Remaining

☐ EU Strategy for the Adriatic and Ionian Region
255 Characters Remaining

A - Project overview **B - Partner** **C - Project Description** **D - Workplan** **E/F - Partner budget** **G - Annexes**

eMS electronic monitoring system developed by PLOT INTERACT

INTERACT is co-financed by the European Regional Development Fund 2_0 10

SAVE

- Check Saved Project
- Save As Pdf File
- User Management
- Exit

Toggle Tree

- Help
- Copy Project
- Delete Project
- Logout

EN



Programme support to applicants



www.interreg-central.eu

USER LOGIN

REGISTER

USERNAME:

PASSWORD:

[FORGOT YOUR PASSWORD?](#)

LOGIN

FIRST CALL

download application package



ABOUT CENTRAL

PROJECTS 2007-2013

DOCUMENTS 2007-2013

NEWS & EVENTS

**PROJECT
IDEAS**



EVENTS



Frequently asked
QUESTIONS



CONTACTS



SEARCH FOR PEOPLE and PROJECTS from your region by clicking on the map

2015 CALENDAR

12 steps to cooperation in
Interreg CENTRAL EUROPE



CENTRAL COMMUNITY

If you would like to post your project idea or find partners for it you can join the CENTRAL Community.

REGISTER NOW

Contact



Interreg CENTRAL EUROPE Programme

Chiara Casarella

Joint secretariat
Kirchberggasse 33-35/11
1070 Vienna
Austria

Phone	+43 (0) 1 8908 088 - 2403
Mail	info@interreg-central.eu
Web	www.interreg-central.eu
FB	www.facebook.com/CentralEuropeProgramme
LinkedIn	www.linkedin.com/in/CentralEuropeProgramme
Twitter	@CEProgramme