



DE Department of
Engineering
Ferrara

Corso di
Progettazione Assistita di Strutture Meccaniche

***Come installare ANSYS Mechanical
Student edition***

www.ansys.com

The screenshot shows the ANSYS website homepage. The browser's address bar displays the URL <https://www.ansys.com>. The website header includes the ANSYS logo, navigation links for Careers, Academic, Customer Portal, and Resource Library, and a search bar. The main navigation menu is expanded, showing categories such as 3D Design, Academic (circled in red with a red arrow pointing to it), Fluids, Structures, Platform, Semiconductors, Systems, and All Products. A yellow 'CONTACT' button is visible on the right side of the page. A cookie consent banner is present at the bottom of the page, with 'Accept' and 'Learn More' buttons. The Windows taskbar at the bottom shows the time as 15:00 on 20/03/2018.

ANSYS – Student edition

The screenshot shows a web browser window displaying the ANSYS website. The browser's address bar shows the URL <https://www.ansys.com/academic/free-student-products>. The page features four main content blocks:

- Free Student Software**: A section highlighted with a red circle. It includes an image of a lecturer in a classroom, the text "ANSYS is committed to putting free simulation engineering software in the hands of", and a "DOWNLOAD NOW" button.
- Student Support Resources**: Includes an image of a student at a computer, the text "Are you a student using ANSYS and looking for assistance?", and a "GET HELP" button.
- Tools for Educators**: Includes an image of a teacher and students, the text "Find out about our Academic products, embedding simulation in your curriculum and more.", and a "LEARN MORE" button.
- Academic Blog**: Includes an image of a student team with a race car, the text "Read posts from student team members, STEM teachers and professors about the impact", and an "EXPLORE & SUBSCRIBE" button.

At the bottom of the page, there is a cookie consent banner: "This website uses cookies to improve user experience. By using our website you consent to all cookies in accordance with our Cookie Policy." with "Accept" and "Learn More" buttons. A system tray notification at the bottom right reads "Screenshot aggiunto" and "È stato aggiunto uno screenshot al tuo Dropbox." The Windows taskbar at the bottom shows the date and time as 15:00 on 20/03/2018.

ANSYS – Student edition

Discovery Live Student

ANSYS AIM Student

ANSYS Student

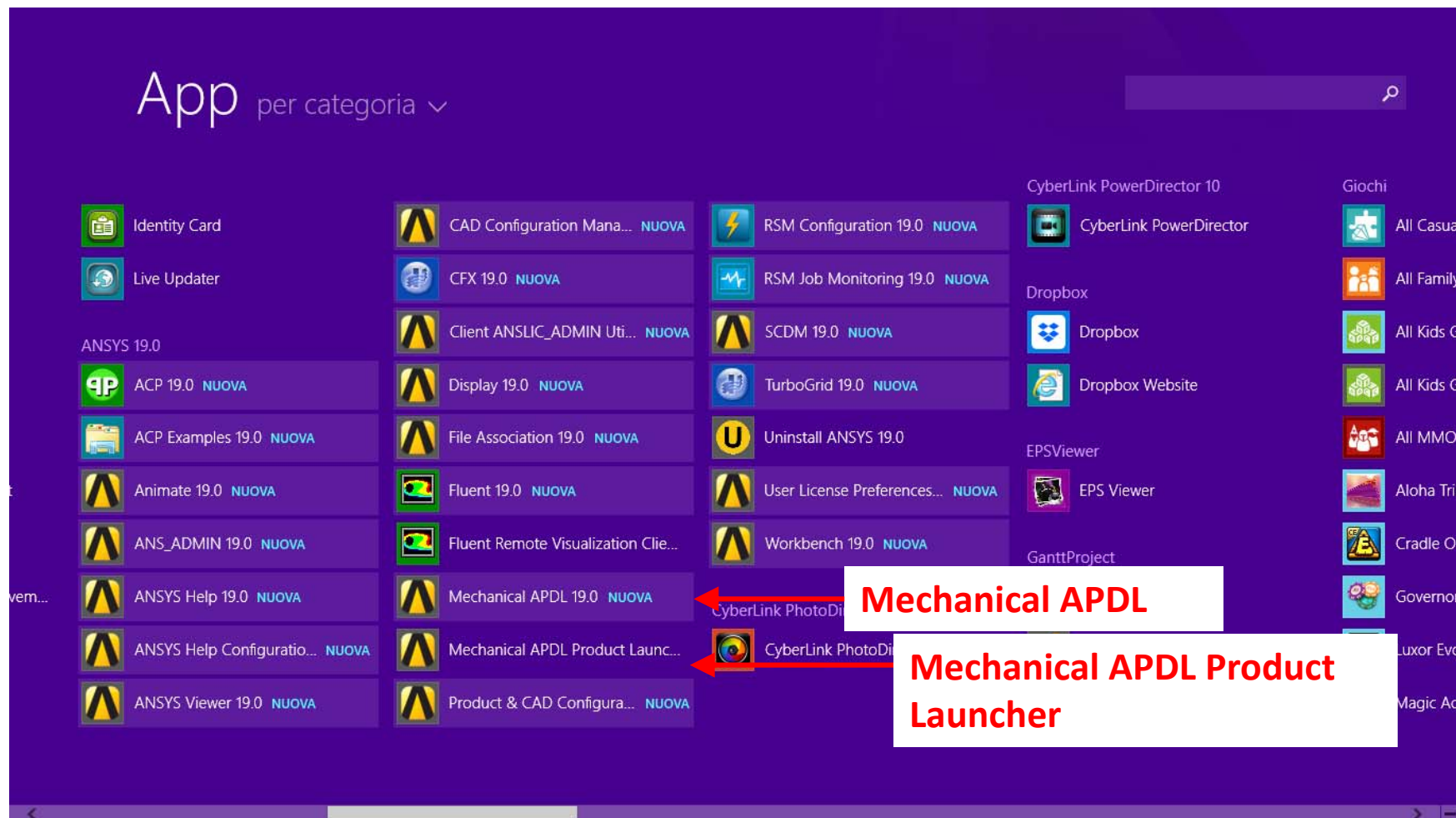
▼ Download ANSYS Student 19.0

ANSYS Student is our ANSYS Workbench-based bundle of ANSYS Mechanical, ANSYS CFD, ANSYS Autodyne, ANSYS SpaceClaim and ANSYS DesignXplorer. ANSYS Student is used by hundreds of thousands of students globally. It is a great choice if your professor is already using it for your course or if you are already familiar with the ANSYS Workbench platform.

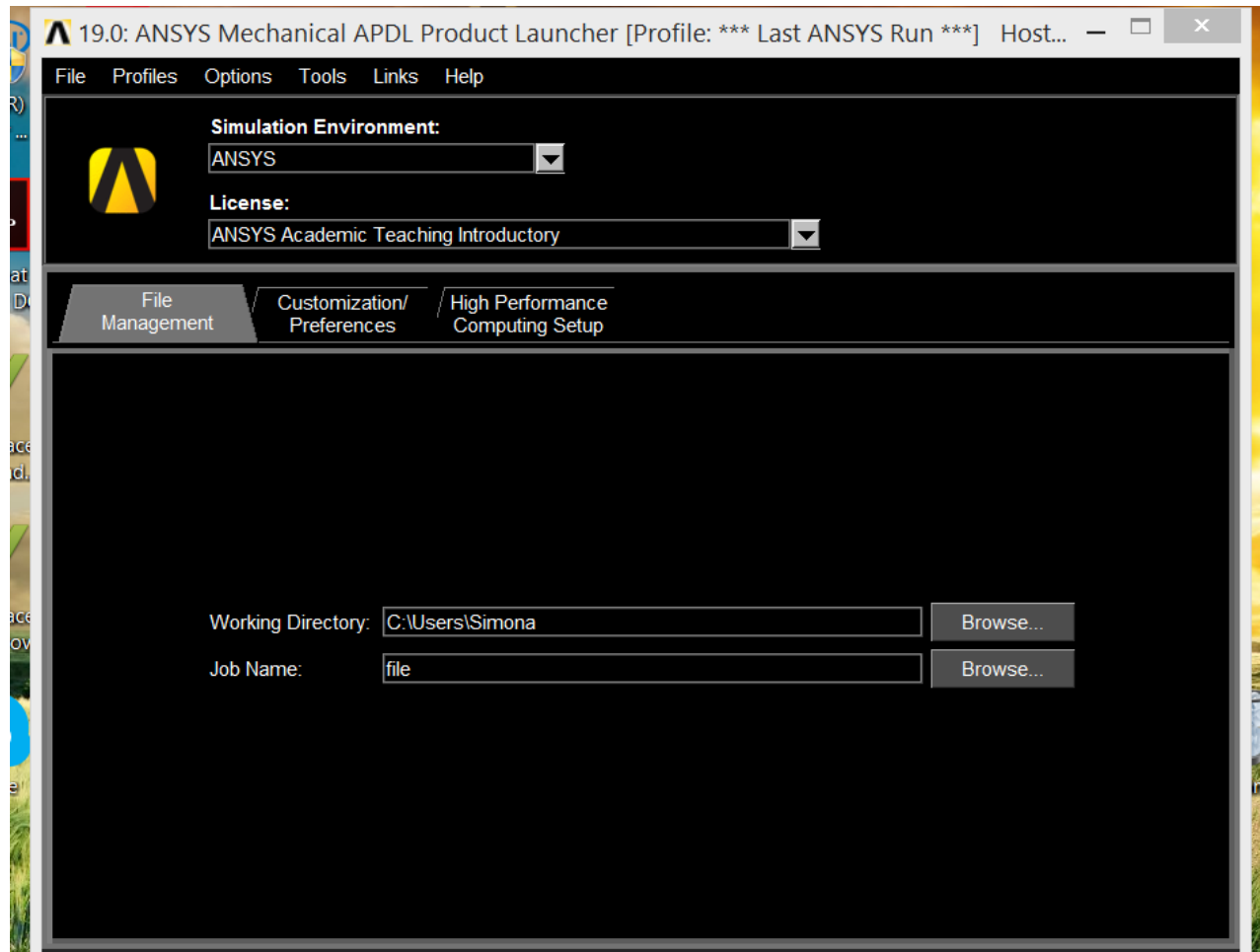
DOWNLOAD ANSYS STUDENT 19.0

Apps

Dopo l'installazione....



Mechanical APDL Product Launcher



Mechanical APDL

