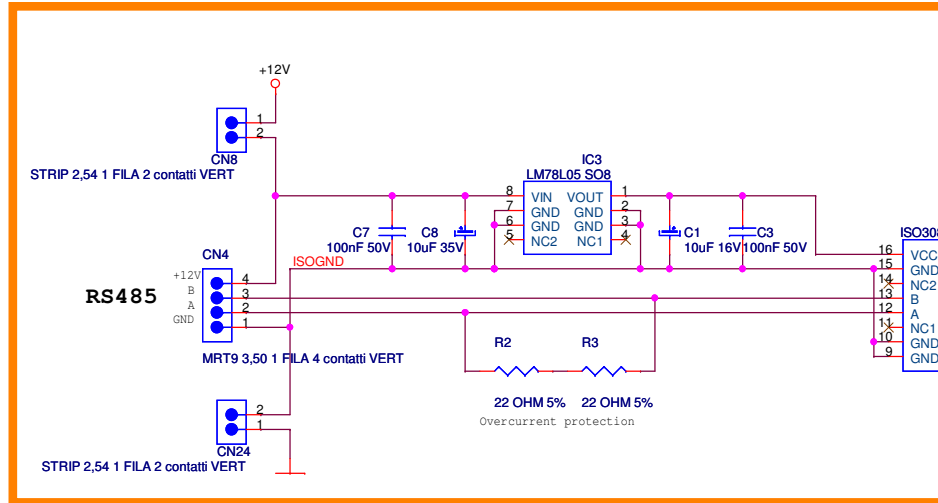
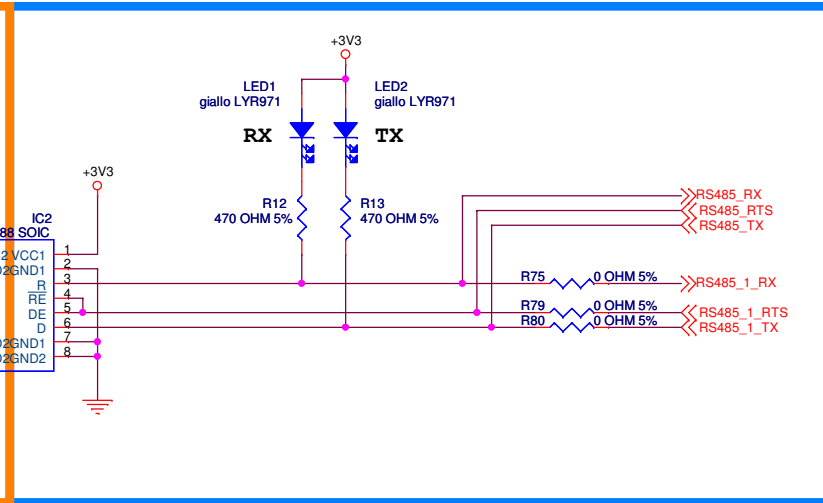


## Power Planes



## Digital Planes



MICRONOVA S.R.L. PADOVA ITALY

Disegnatore: BENETTI G.

I092\_2 A++.

B 144X144 ARM9

2

Tuesday, May 25, 2010

1 1 7

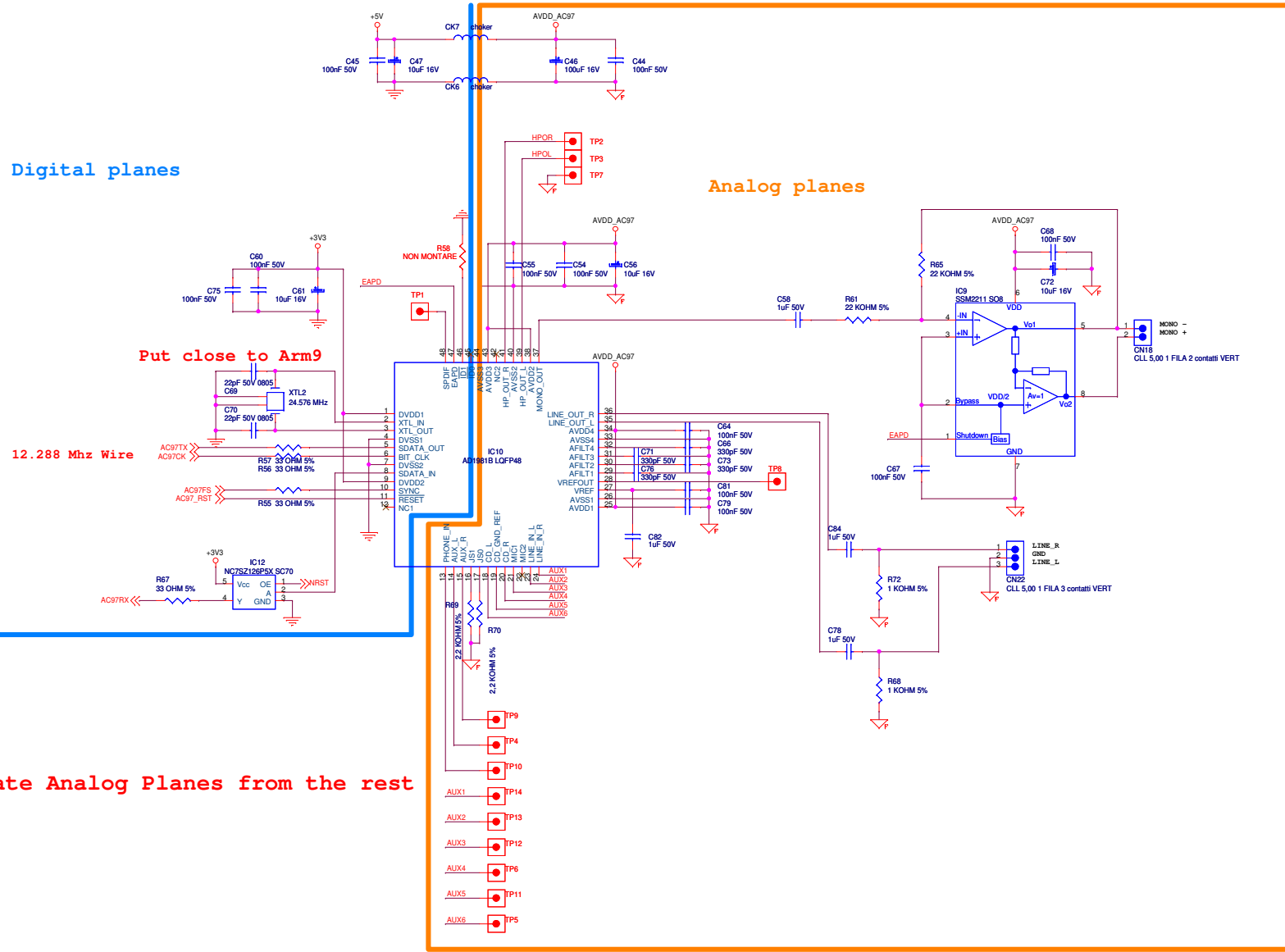
Digital planes

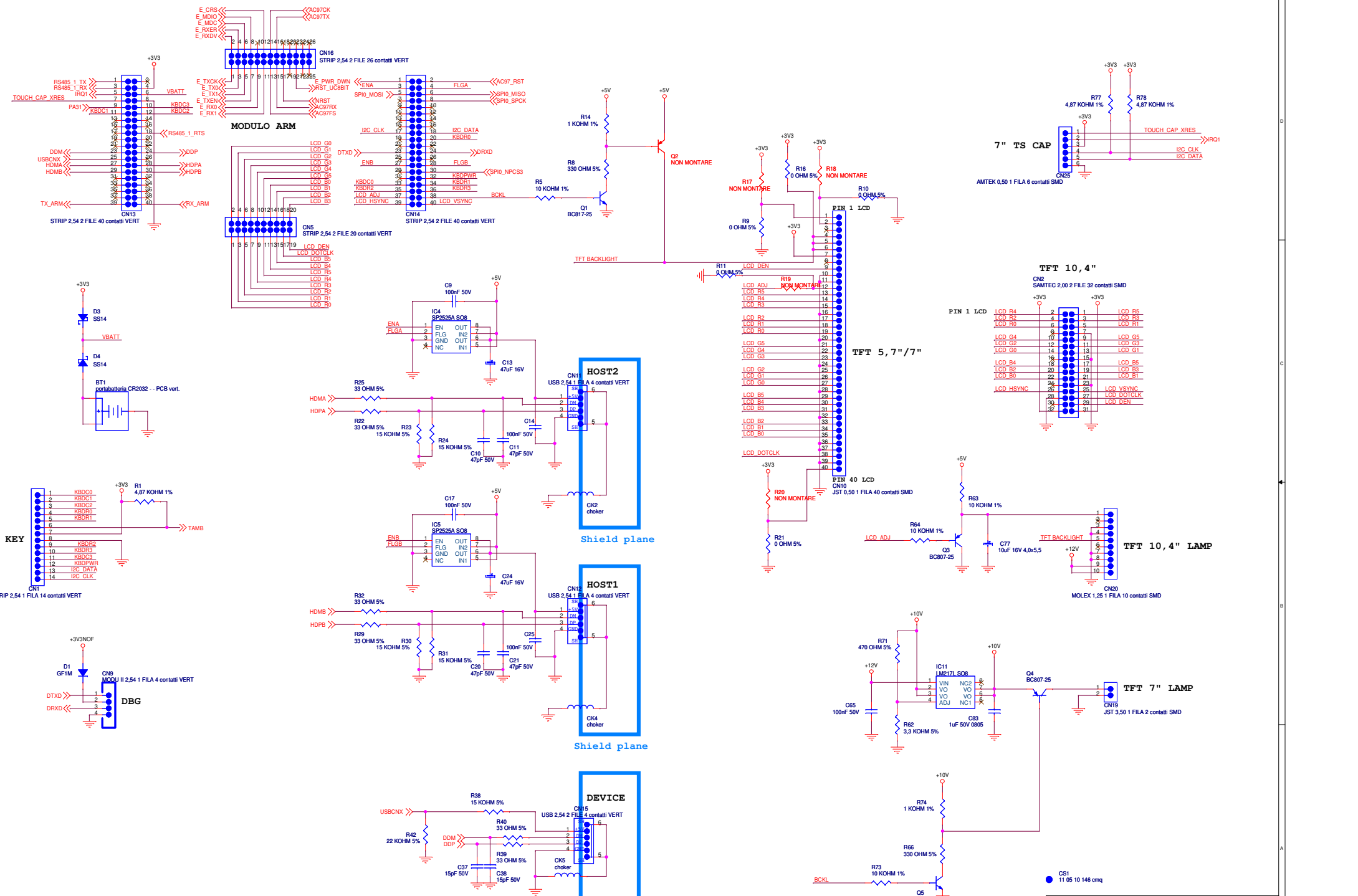
Analog planes

12.288 Mhz Wire

Put close to Arm9

Completely separate Analog Planes from the rest



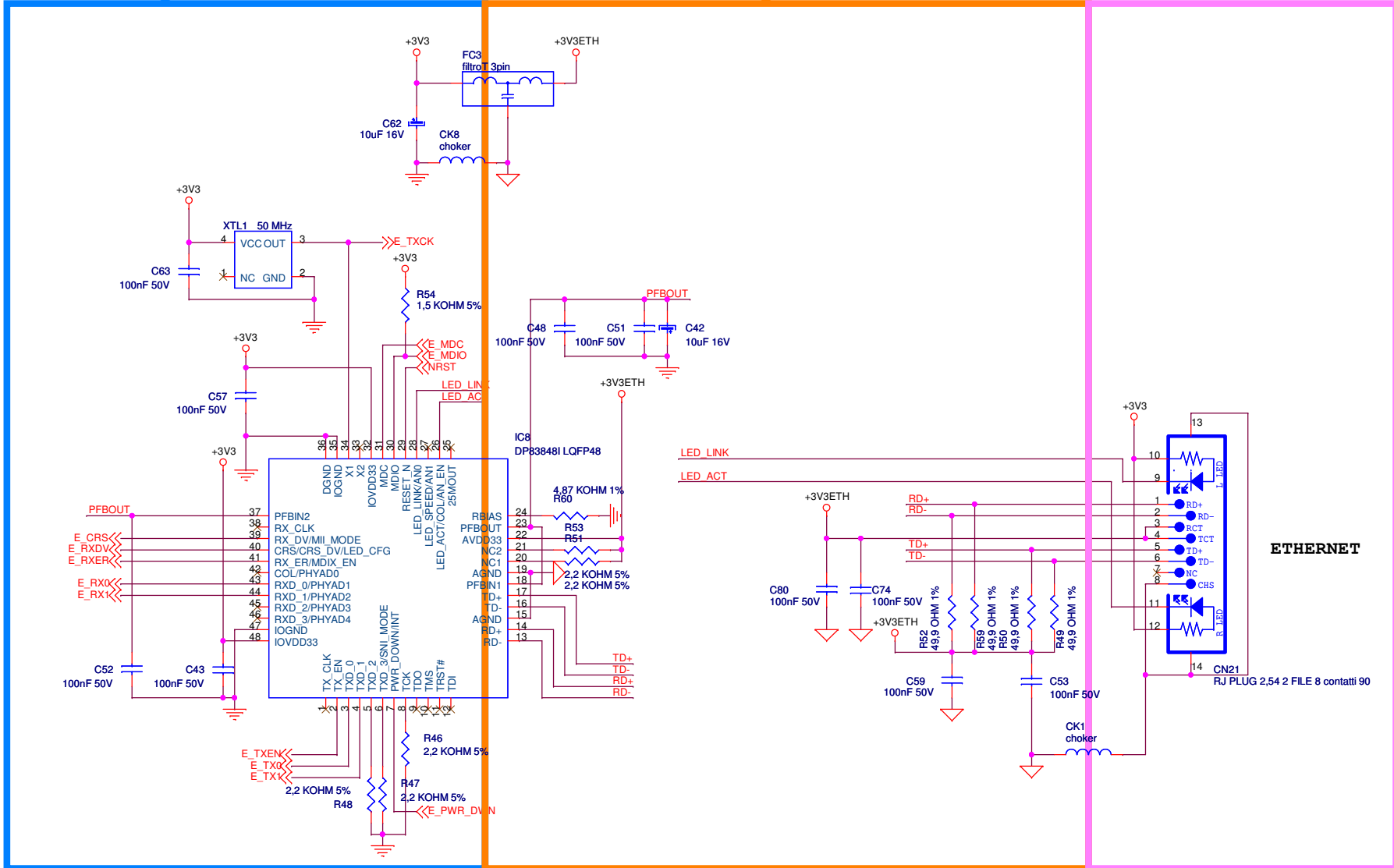


<b>MICRONOVA S.R.L. PADOVA ITALY</b>	
Designatore: BENETTI G.	
<b>I092_2 A++.</b>	
C	144X144 ARM9
Tuesday, May 25, 2010	
2	7

# Digital Planes

# Analog Planes

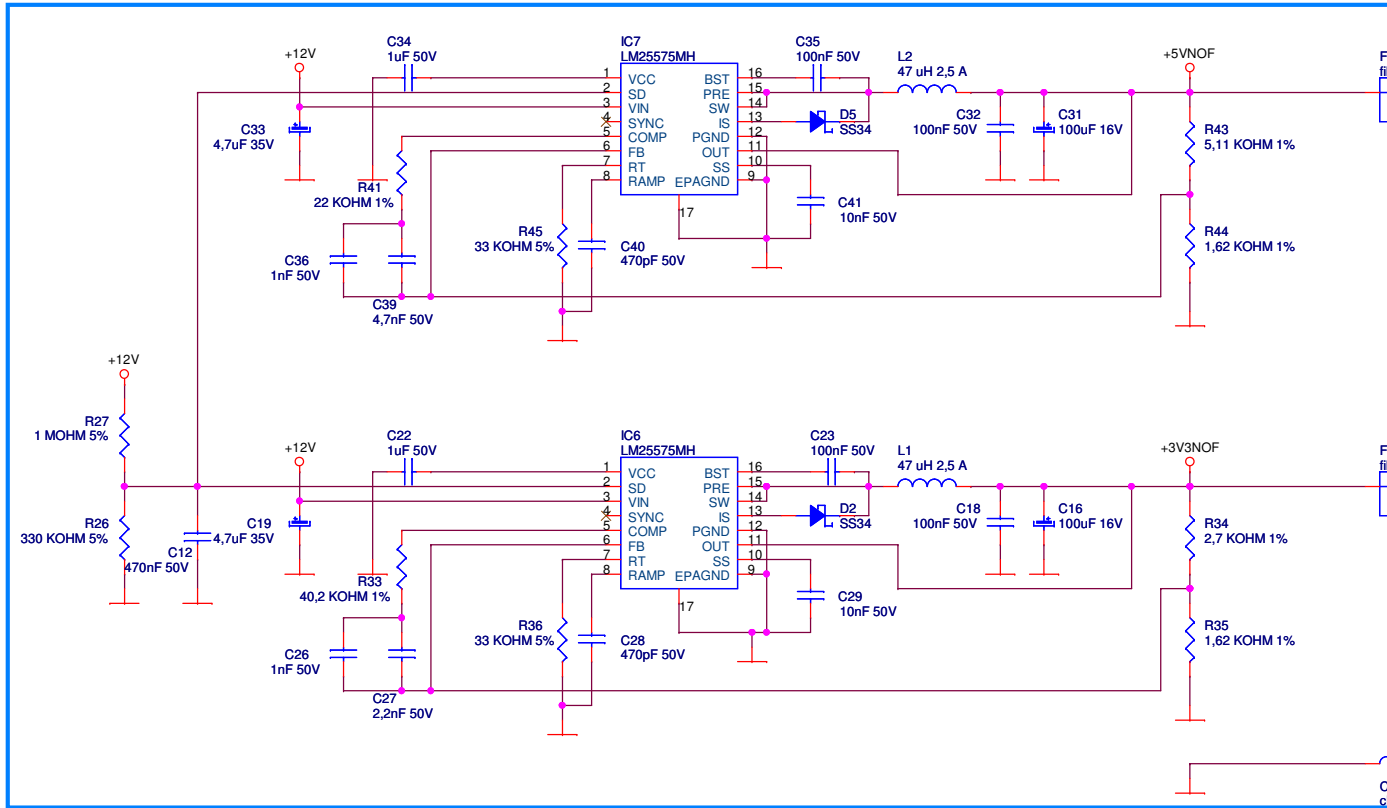
# Shield Planes



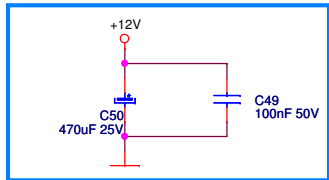
<b>MICRONOVA S.R.L. PADOVA ITALY</b>	
Disegnatore: BENETTI G.	
<b>I092_2 A++.</b>	
B	144X144 ARM9 2
Tuesday, May 25, 2010	

Completely separate Power Planes from the rest

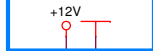
3rd Stage



2nd Stage



1st Stage



CPM 5,00 1 FILA 2 contatti VERT  
CN17

From J026

POWER +12V

MICRONOVA S.R.L. PADOVA ITALY

Disegnatore: BENETTI G.

I092\_2 A++.

B 144X144 ARM9

2

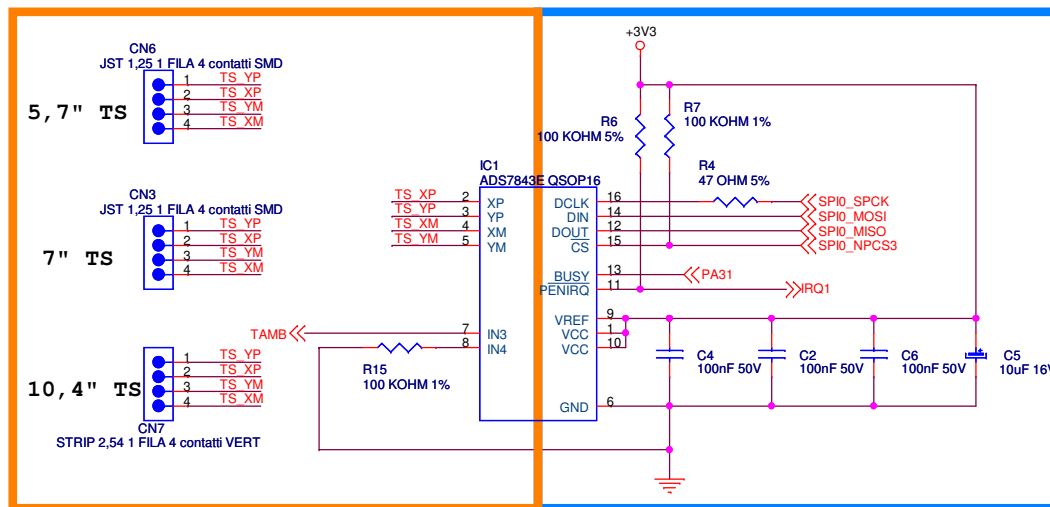
Tuesday, May 25, 2010

6

7

## Analog (TS) Planes

## Digital Planes



MICRONOVA S.R.L. PADOVA ITALY

Disegnatore: BENETTI G.

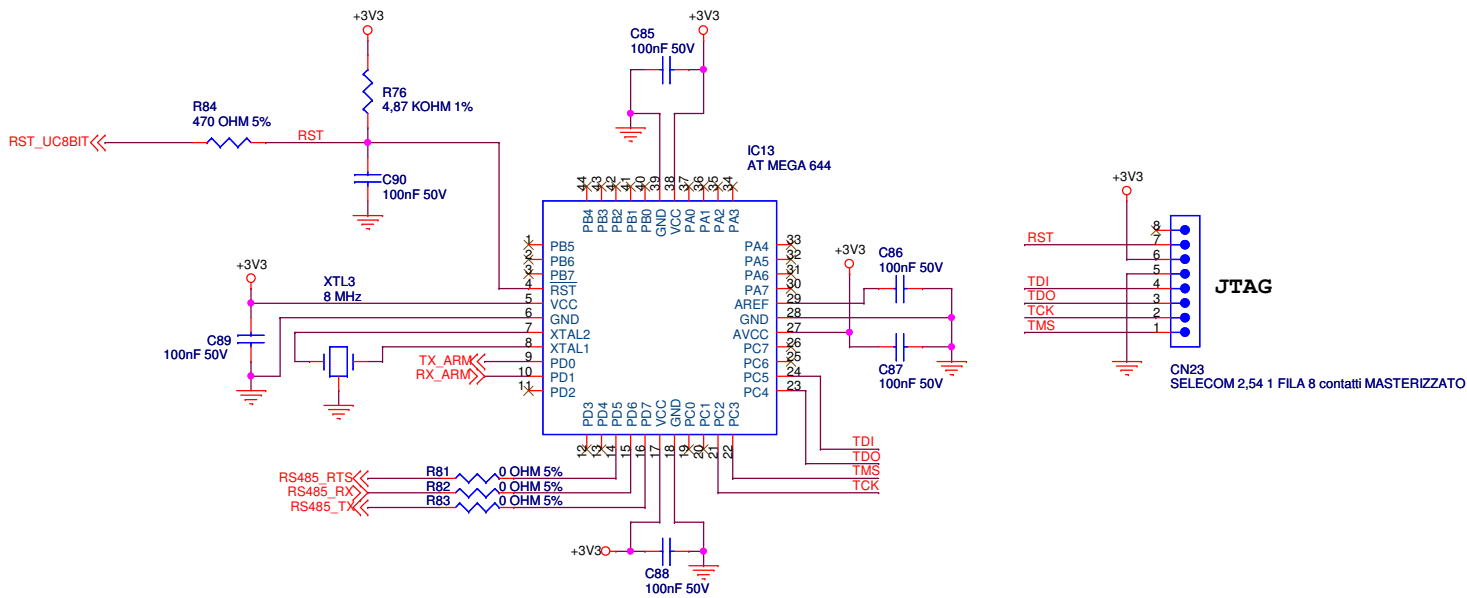
**I092\_2 A++.**

B 144X144 ARM9

2

Tuesday, May 25, 2010

1 7 7



<b>MICRONOVA S.R.L. PADOVA ITALY</b>	
Disegnatore: BENETTI G.	
<b>I092_2 A++.</b>	
B	144X144 ARM9 2
Tuesday, May 25, 2010 7 7	